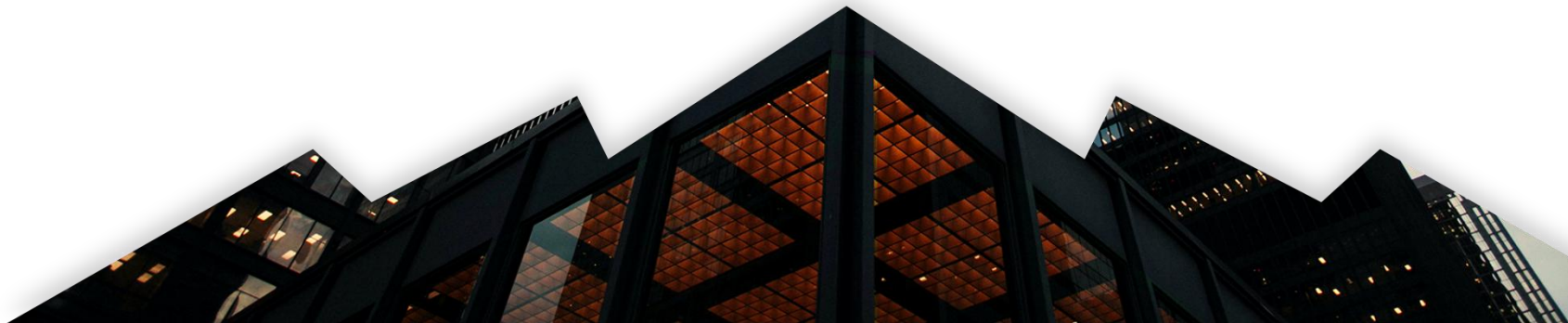


企业介绍

高端商务企业介绍推广

佛山凯莉丝家居饰品有限公司



目录

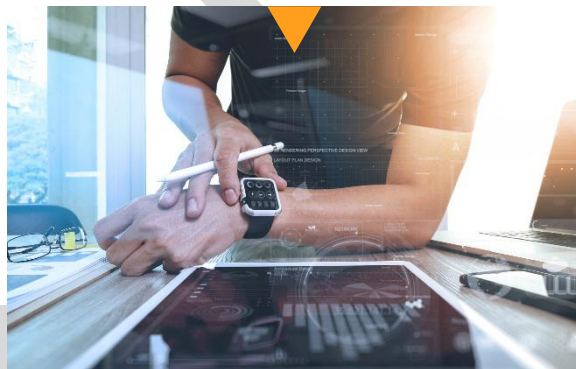
CONTENTS



企业介绍

COMPANY INTRODUCTION

01



产品运营

PRODUCT OPERATION

02



资质证书

QUALIFICATION CERTIFICATE

03



项目案例

PROJECT CASE

04

discover your unique vision

01

企业介绍

COMPANY INTRODUCTION

公司坚持科技创新，已成功获批成为国家高新技术企业。公司依托强大的研发团队，依靠自主研发、技术创新，陆续开发出阻燃、抗静电、3M防污、抗菌防螨、防臭等前沿技术。其中S-BACK沥青高密度无纺布底背为国内顶尖底背技术。

公司坚持原创设计，紧跟国际潮流，已开发出80多个系列产品，得到国内外客户的一致好评。其中布莱德系列产品获得2020年山东省省长杯铜奖。

公司凭借着高质量的产品，良好的信誉，优质的服务，产品畅销全国近三十多个省、市、自治区，远销阿联酋、印度、巴基斯坦、日本、台湾、美国等国家。





前道工序

两台美国CMC簇绒机，可生产5+5工艺平圈方块地毯；

一台国产WDSW簇绒机，可生产8+4多圈高低提花方块地毯；

一台与东华大学.屹立（中国）合作的8+4多圈提花方块地毯簇绒机；

两台国产WDSW簇绒机，可生产6+6多圈高低提花方块地毯；

两台NKS（日本中川）簇绒机，可生产各类圈割绒方块地毯；

三台道下铁工（日本）簇绒机，分别可生产5+5多色提花、5/64移针、1/10割绒等方块地毯。

后道工序

后整理工序：我们已开发的后整理技术有阻燃、抗菌、防臭、防污、防螨、抗静电等保证能源供应可持续发展，公司采购德州（中国）YY-Q-W-YC(QT)天然气锅炉；

做好预涂强化拔出力度，公司采购兴华机械（中国）TJ-2400预涂线；

底背决定产品第一质量，使用目前国内最好的兴华机械（中国）设备，PVC-2400型号PVC覆底线和LQ-1500型号沥青覆底线；

尺寸是常见的质量问题之一，为保证切刀切割不会晃动，采购两条目前国际知名切割设备ABC-100型号爱隆（台湾）切割线；

GILBOS（荷兰）纱线设备是目前世界最先进的纱线加工设备，可提供快速补给以保证交货期的准确完成。

01

设备展示

DEVICUE DISPLAY



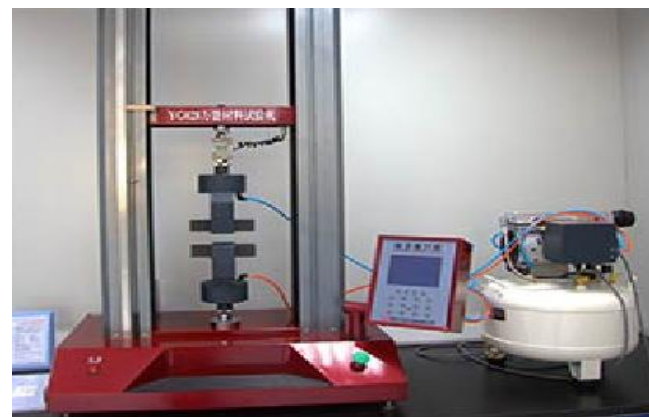
01

检测中心

TEST CENTE



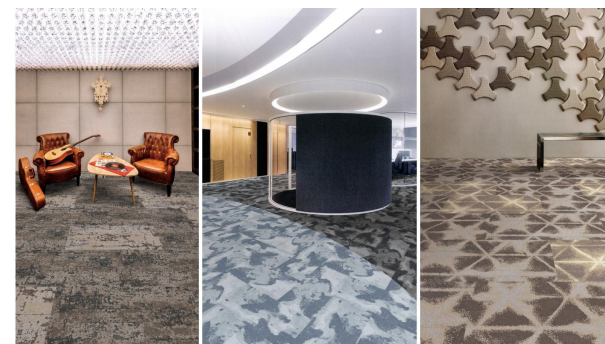
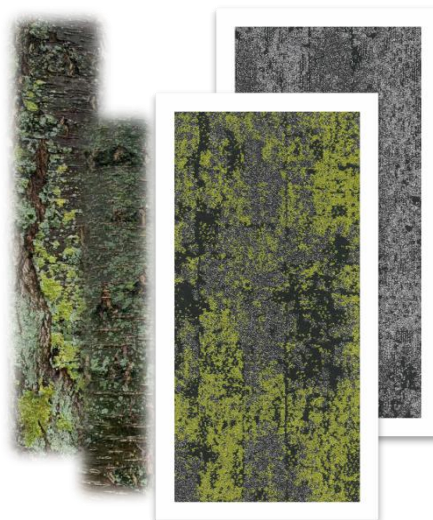
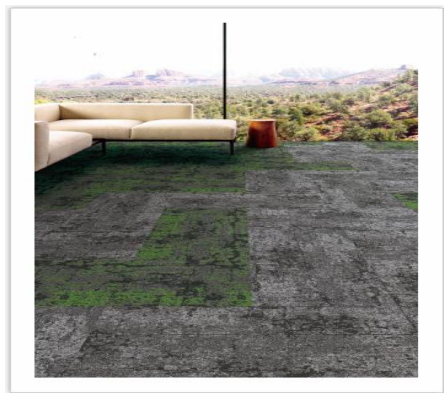
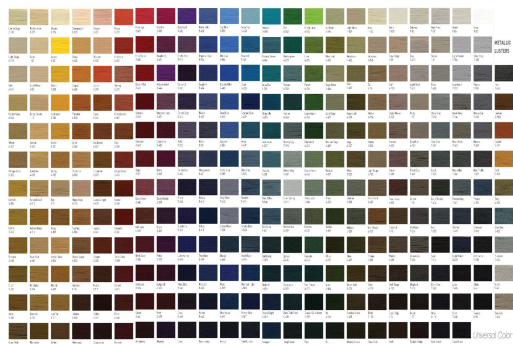
质量无小事，产品质量关系到企业的生死存亡。公司具有全面质量控制的保证体系，国际先进检测仪器、精确的化验分析等，为质量控制提供强有力的保证并提供质保10年的保障。公司始终把“质量是企业的生命”作为企业管理的中心，从原料彩购，检测到生产制造、包装、运输、全方位实行ISO9001全过程跟踪检查，保证了每个生产过程、环节始终处于受控状态，从而为地毯的优良品质，提供了有力的保证。



企业介绍

研发能力

从成立至今，已成功设计出包括color point产品在内的80多个系列一千多个色号的热销产品。



01

原料说明

MATERIAL DESCRIPTION

买断受保护纱线

美国环球纱线
比利时博优纱线
四通化纤

.....

健康环保胶水

美国塞拉尼斯胶水
美国3M胶水

.....



国际品牌材料

德国科德宝无纺布
英国禄博纳无纺布

.....

安全无毒害添加剂

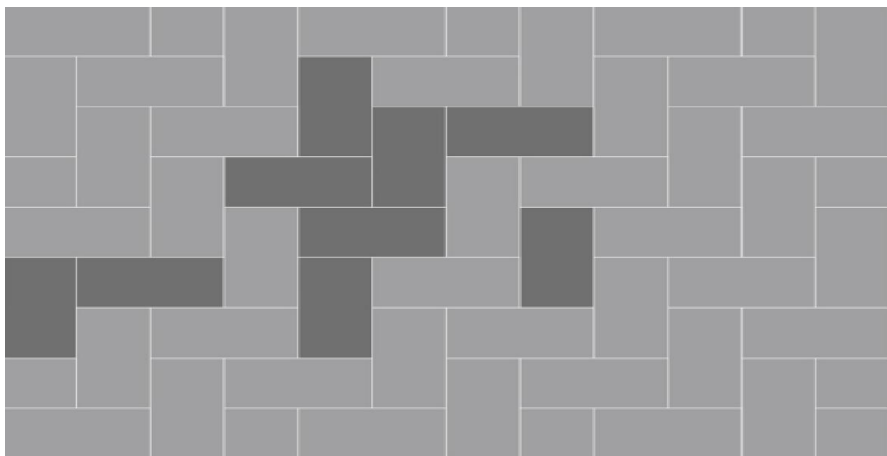
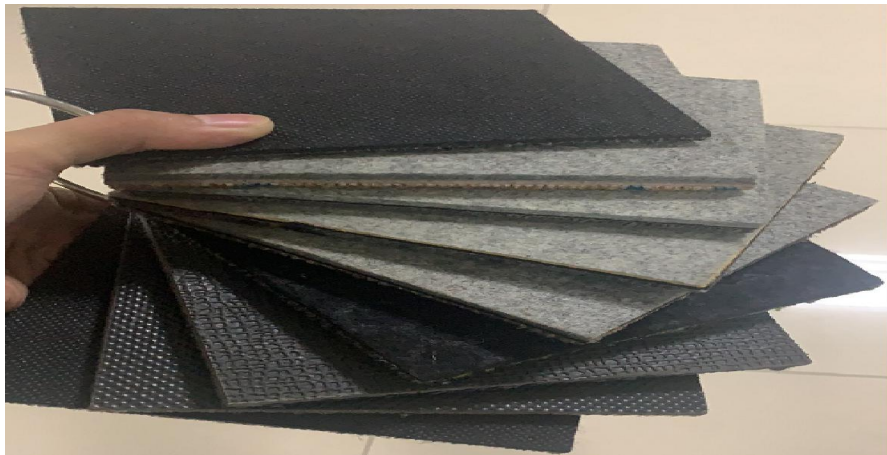
沈阳化工沥青
沈阳化工PVC
蓝帆股份DOP DOTP

.....

01

产品参数

PRODUCT PARAMETER



公司目前提供尺寸有

50×50cm

50×100cm

25×100cm

100×100cm

60×60cm

六边形

公司现有底背分类为

800g无纺布沥青/PVC软底

1100g无纺布沥青/PVC软底

PVC压纹底背

沥青底背

PU软底

亦可使用仿粘麻点布作为背衬

阿克明斯特地毯沥青无纺布软底技术，行业首创

高密度沥青无纺布覆底技术，是行业中独创“应力预存”高密度

无纺布覆底技术，无纺布密度最高，产品质感最好，永不翘曲。

产品运营

PART 02

DISCOVER YOUR UNIQUE VISION

精准

为“恰到好处”的难得：对细节之处“恰到好处”的追求背后，是无懈可击的精准工艺。

超前

在地铺设计和应用中超越先前的策略、愿景和经验，展望未来。



比例

代表0.618的美感哲学，图案设计与切割工艺相结合都遵循黄金比例0.618，不同尺寸及铺装方式，都以极具美感哲学的姿态呈现于世。

个性

坚持高品质的原创设计。国外客户尊重原创，领先于国内同行、成为高端模块地毯市场的一面旗帜，成为众多优质项目人士追求的首先目标。

性能

除了美之外，用实力说话，地毯设计必然兼具美学与实用双重价值。打造“鱼和熊掌可兼得”的全方位体验。

50×50CM

铺装方式

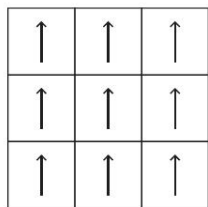
INSTALL

METHOD

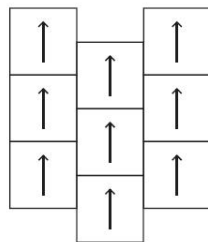
1.3: Configuration:

1.3.1: Square Module:

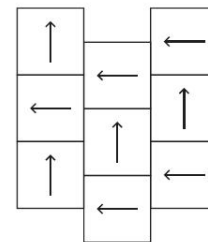
STANDARD SQUARE SIZE INSTALLATION METHOD



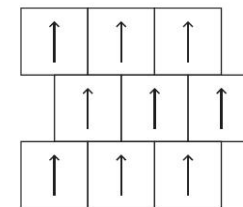
Monolithic



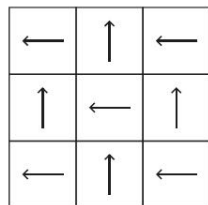
Vertical Brick



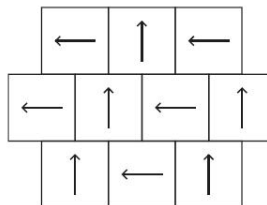
Vertical Stair Step



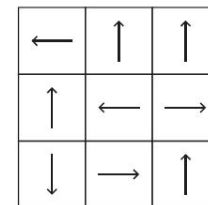
Horizontal Brick



Checkerboard



Horizontal Stair Step



Random

25×100CM

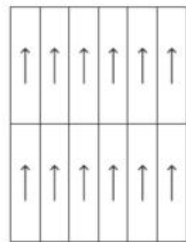
铺装方式

INSTALL

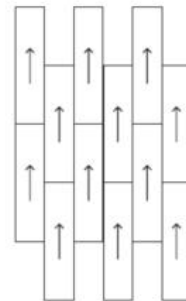
METHOD

1.3.2: Plank Module:

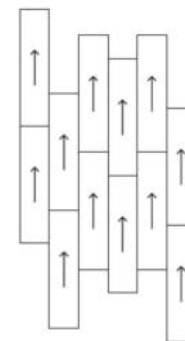
STANDARD PLANK SIZE INSTALLATION METHOD



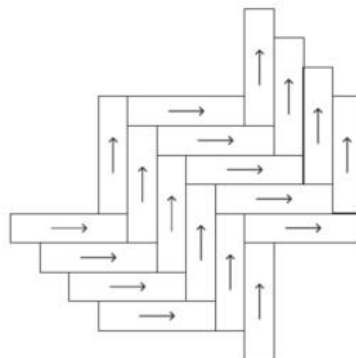
Monolithic



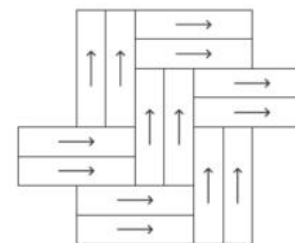
Vertical Brick



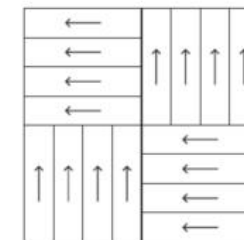
Random Vertical Brick



Herringbone



Double Herringbone

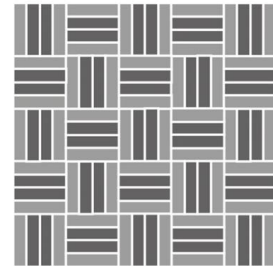
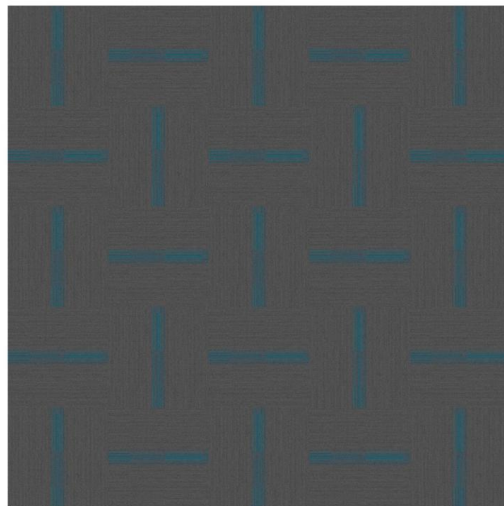
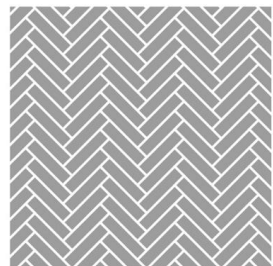
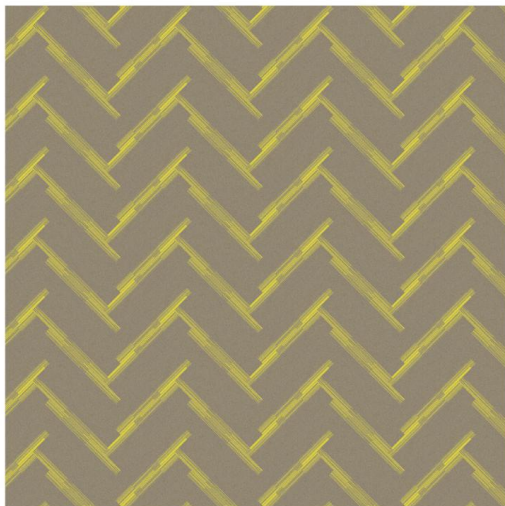
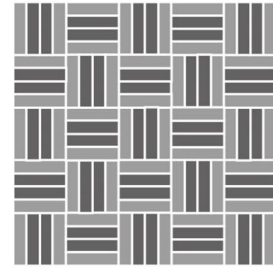
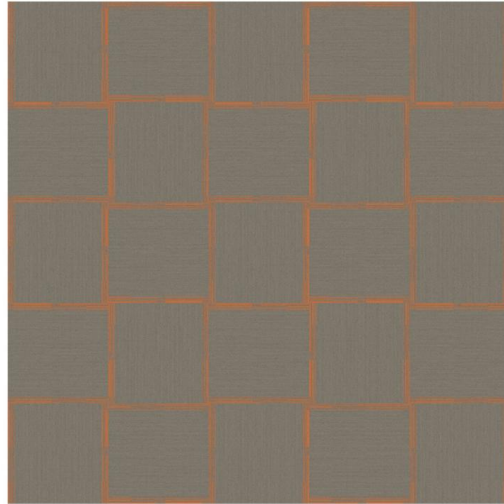
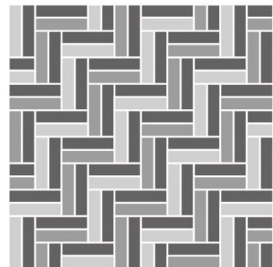


Checkerboard

02

铺装展示

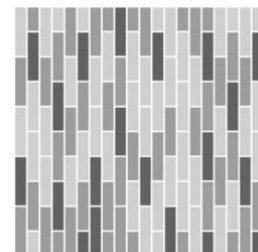
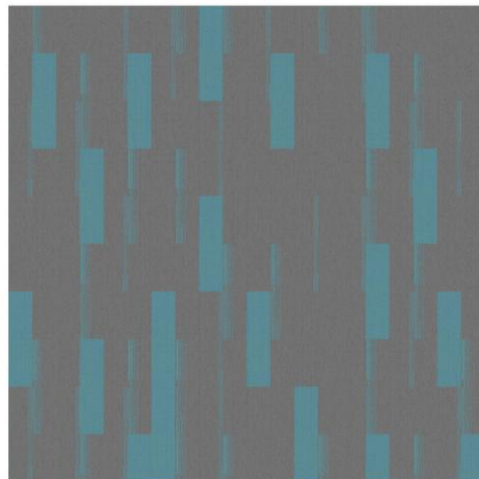
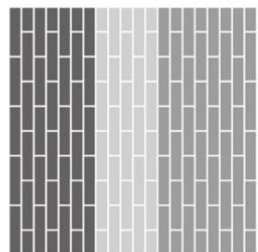
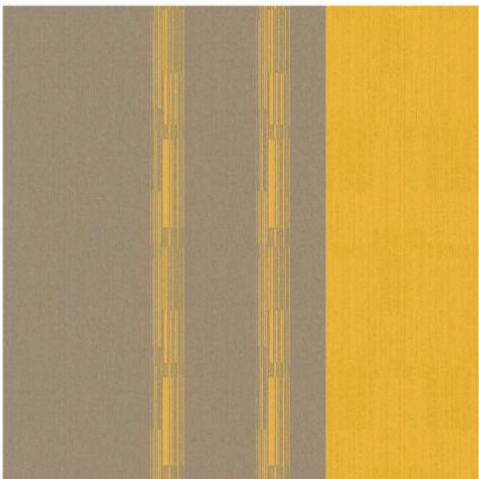
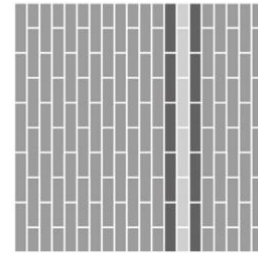
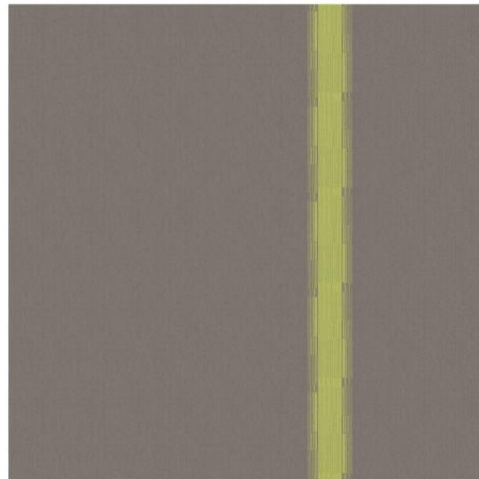
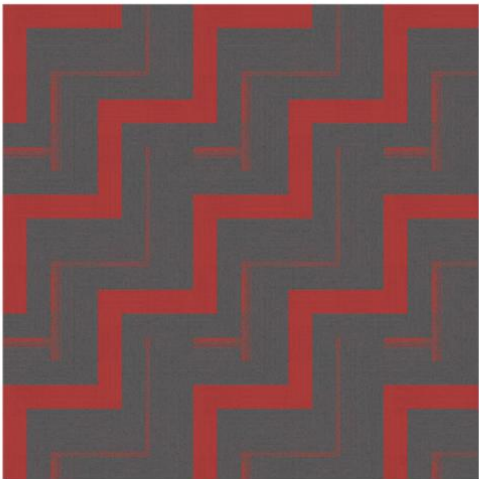
INSTALL SHOW



02

铺装展示

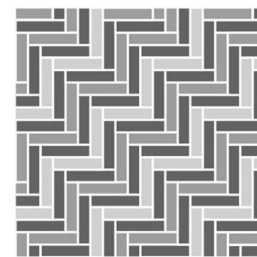
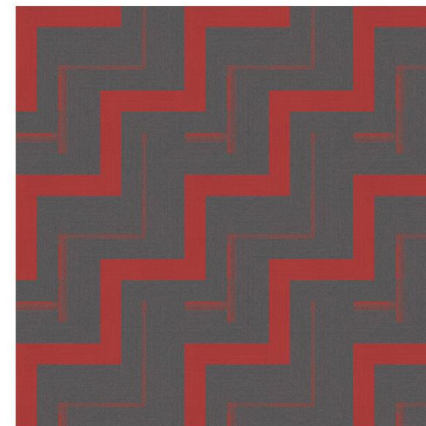
INSTALL SHOW



02

铺装展示

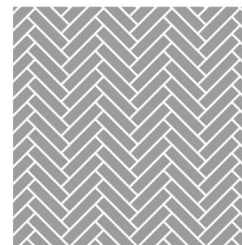
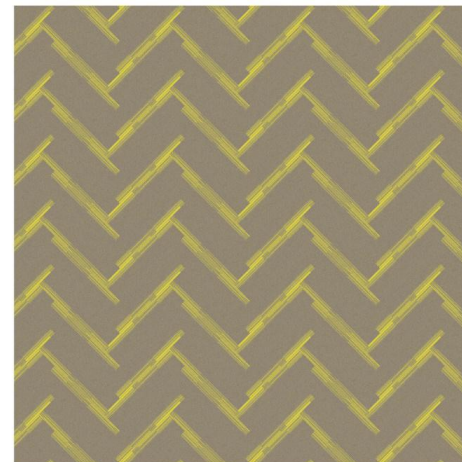
INSTALL SHOW



02

铺装展示

INSTALL SHOW



02

产品纱线

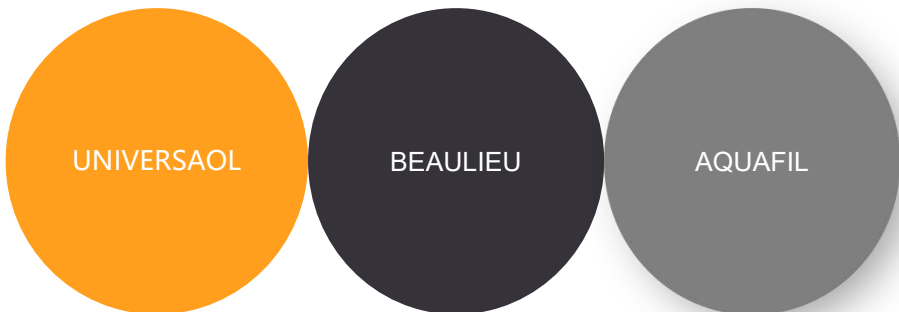
PRODUCT YARN

为什么使用优质纤维？

UNIQUES的品牌纱线，原液染尼龙是耐久性和持久美丽的关键

非原液染纤维就像萝卜，只有表面有颜色

原液染色纤维就像胡萝卜一样，到处着色



原液染色技术

传统染色技术



VS.

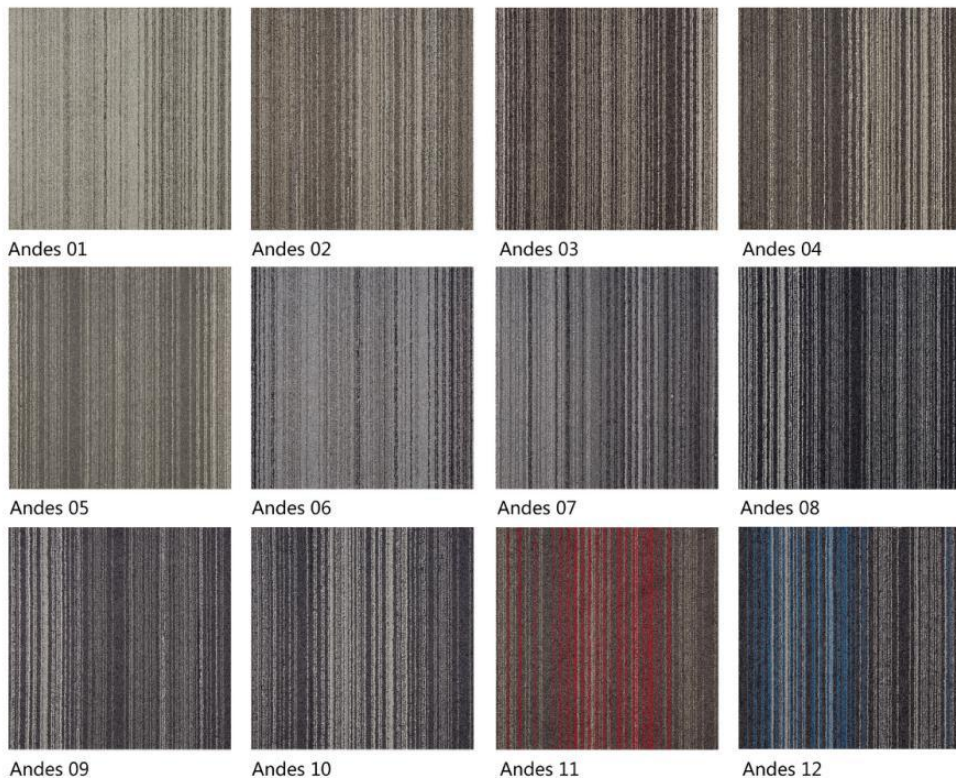


原液染色实际上是无水染色过程，颜色从里到外贯穿整个纤维。如图上胡萝卜所示。

连续的白纱染色、缸染需要加热的水和染料，颜色只能够覆盖纤维表面。如图上萝卜所示。

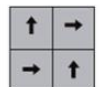
产品展示 安第斯

PRODUCT SHOW



Specifications & Approved installation methods

Style Name: Andes 安第斯
 Face Yarn: 100%Universal Fibers Type66
 Gauge: 1/12G
 Construction: Loop
 Pile Height: 4.5mm
 Pile Weight: 21oz/yd²
 Backing: PVC with fiberglass
 Tile size: 50CM * 50CM



Quarter-turn



Brick



02

产品展示 安纳西

PRODUCT SHOW

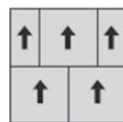


Specifications & Approved installation methods

Style Name: Ontario 安大略
 Face Yarn: Nylon6
 Gauge: 1/10G
 Construction : Cut
 Pile Height: 5mm
 Pile Weight: 25 oz/yd2
 Backing: PVC with fiberglass
 Tile size : 50CM * 50CM



Quarter-turn



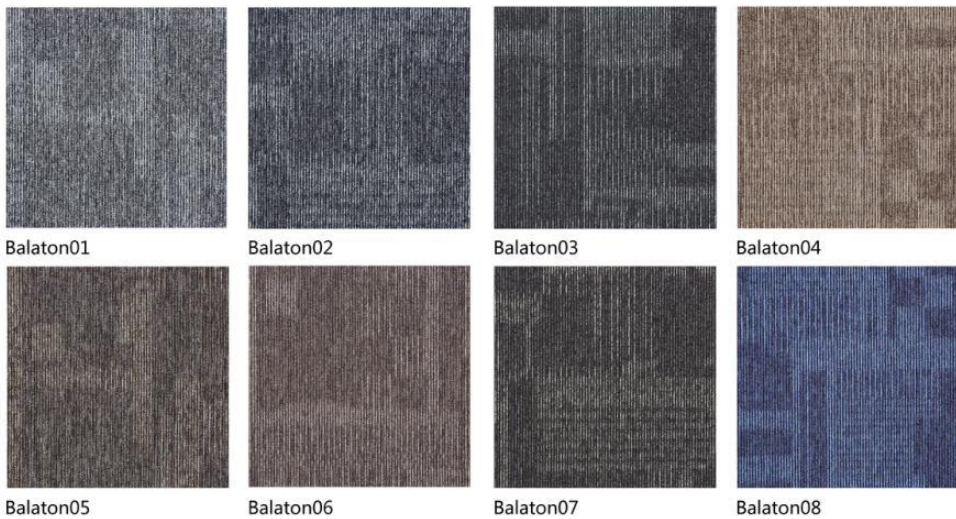
Brick



02

产品展示 巴拉顿

PRODUCT SHOW

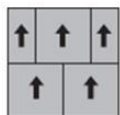


Specifications & Approved installation methods

Style Name: Balaton 巴拉顿
Face Yarn: Beaulieu Nylon Yarns
Gauge: 1/12 G
Construction : Hi/Mi/Lo Loop
Pile Height: 4-3.5-2.5mm
Pile Weight: 16-17 oz/yd²
Backing: PVC with fiberglass
Tile size : 50CM * 50CM



Quarter-turn



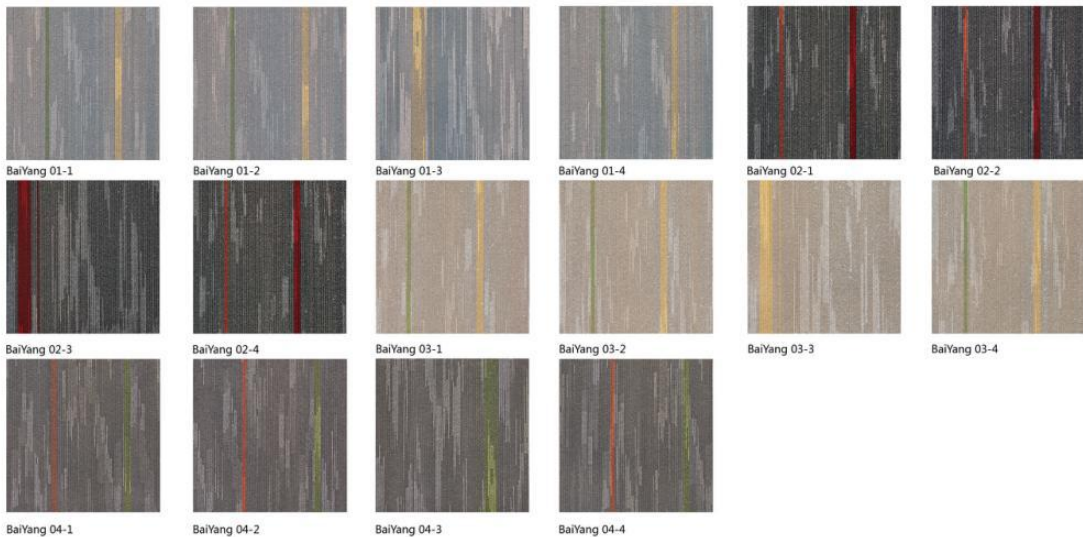
Brick



02

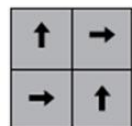
产品展示 白杨

PRODUCT SHOW

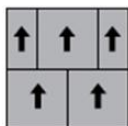


Specifications & Approved installation methods

Style Name: BaiYang 白杨
 Face Yarn: 100%PP
 Gauge: 1/12 G
 Construction : Hi/Mi/Lo Loop
 Pile Height: 3-3.8-4.8mm
 Pile Weight: 15oz/yd2
 Backing: Bitumen
 Tile size : 50CM * 50CM



Quarter-turn

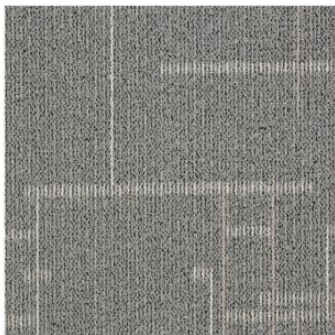


Brick

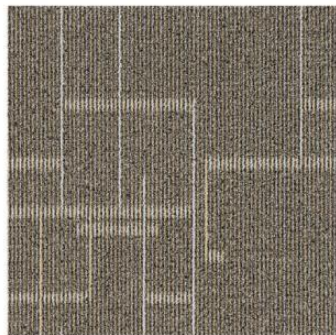


产品展示 百合

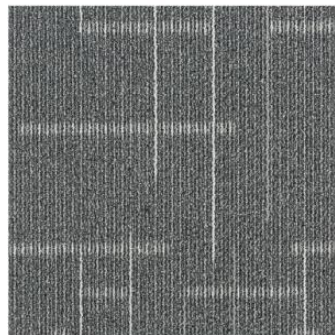
PRODUCT SHOW



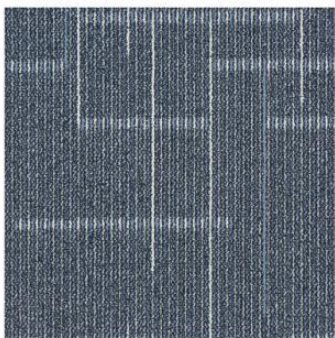
BaiHe 01



BaiHe 02



BaiHe 03



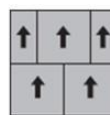
BaiHe 04

Specifications & Approved installation methods

Style Name: BaiHe 百合
 Face Yarn: 100%PP
 Gauge: 1/12G
 Construction: Hi/Mi/Lo Loop
 Pile Height: 5.5-4-3.5mm
 Pile Weight: 18 oz/yd²
 Backing: PVC with fiberglass
 Tile size: 50CM * 50CM



Quarter-turn

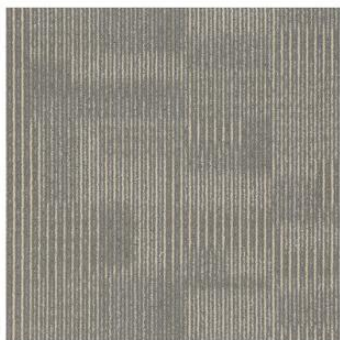


Brick

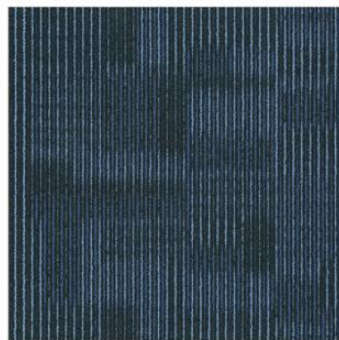


产品展示 贝勒

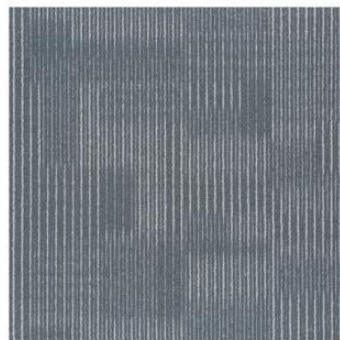
PRODUCT SHOW



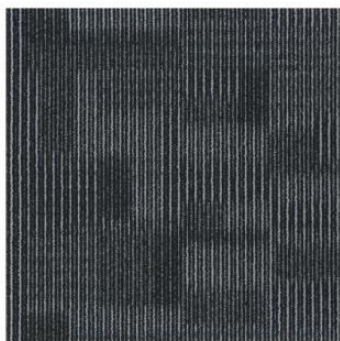
BeiLe 01



BeiLe 02



BeiLe 03



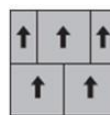
BeiLe 04

Specifications & Approved installation methods

Style Name: BeiLe 贝勒
 Face Yarn: Nylon6
 Gauge: 1/12G
 Construction: Hi/Mi/Lo Loop
 Pile Height: 5.2-3.9-3.1 mm
 Pile Weight: 16.7 oz/yd2
 Backing: PVC with fiberglass
 Tile size: 50CM * 50CM

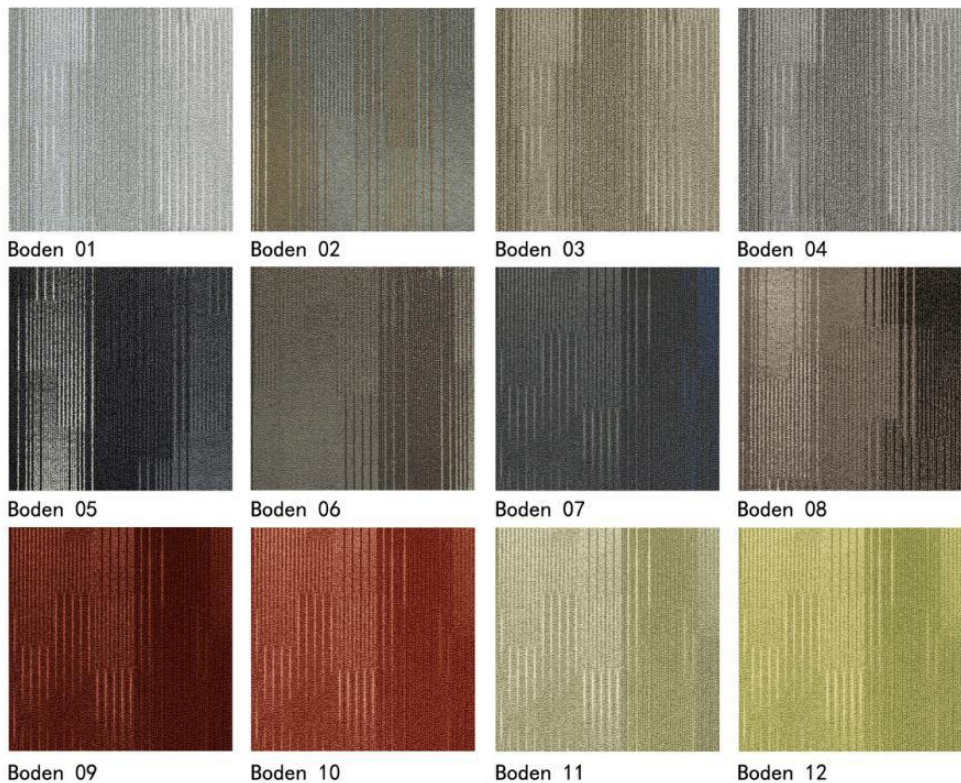


Quarter-turn



Brick





Specifications & Approved installation methods

Style Name: Boden 博登
 Face Yarn: Aquafil 100%Recycled Content Type 6 Nylon
 Gauge: 1/12G
 Construction: Hi/Mi/Lo Loop
 Pile Height: 5-4-3mm
 Pile Weight: 19oz/yd²
 Backing: PVC with fiberglass
 Tile size: 50CM * 50CM



Quarter-turn



Brick



产品展示 博塞纳

PRODUCT SHOW



Bolsena01



Bolsena02



Bolsena03



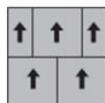
Bolsena04

Specifications & Approved installation methods

Style Name: Bolsena 博塞纳
 Face Yarn: Beaulieu Nylon Yarns
 Gauge: 1/12 G
 Construction : Hi/Mi/Lo Loop
 Pile Height: 4.5-3.5-3mm
 Pile Weight: 18 oz/yd2
 Backing: PVC with fiberglass
 Tile size : 50CM * 50CM



Quarter-turn



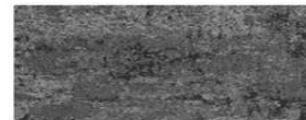
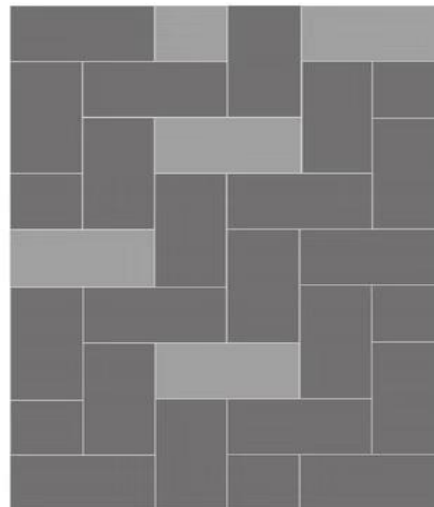
Brick



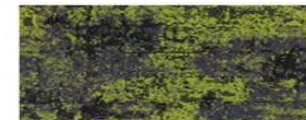
02

产品展示 布莱德

PRODUCT SHOW



Bled | 01 Onyx



Bled | 02 Onyx/Lime



Bled | 03 Onyx/Green



Bled | 04 Onyx/Yellow



Bled | 05 Onyx/Red



Bled | 06 Onyx/Straw



Bled | 07 Onyx/Brick



Bled | 08 Onyx/Macaw



Bled | 09 Onyx/Imperial Blue

STYLE NAME:

BLED

CONSTRUCTION:

TUFTED, TEXTURED LOOP PILE

FACE YARN:

BEAULIEU NYLON

DYE METHOD:

SOLUTION DEY

GAUGE:

1/10

PILE HEIGHT:

6.5-5.5-5 mm

PILE WEIGHT:

27 oz/yd²

BACKING:

PVC

TILE SIZE:

50 x 100 cm

02

产品展示 丁香/山竹

PRODUCT SHOW



DingXiang 01



DingXiang 02



DingXiang 03



DingXiang 04



DingXiang 05



DingXiang 06



DingXiang 07



DingXiang 08



Shanzhu 01



Shanzhu 02



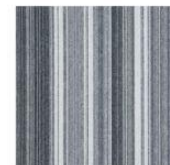
Shanzhu 03



Shanzhu 04



Shanzhu 05



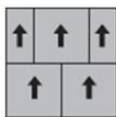
Shanzhu 06

Specifications & Approved installation methods

Style Name: DingXiang 丁香
 Face Yarn: 100%PP
 Gauge: 1/10 G
 Construction: Loop
 Pile Height: 3mm
 Pile Weight: 11.5oz/yd2
 Backing: Bitumen
 Tile size: 50CM * 50CM



Quarter-turn



Brick

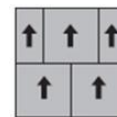


Specifications & Approved installation methods

Style Name: Shanzhu 山竹
 Face Yarn: 100%PP
 Gauge: 1/10 G
 Construction: Loop
 Pile Height: 3mm
 Pile Weight: 12 oz/yd2
 Backing: Bitumen
 Tile size: 50CM * 50CM



Quarter-turn



Brick



产品展示 冬青100

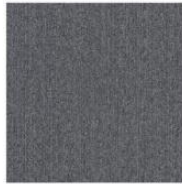
PRODUCT SHOW



Holly100 01



Holly100 02



Holly100 03



Holly100 16



Holly100 17



Holly100 04



Holly100 05



Holly100 06



Holly100 18



Holly100 07



Holly100 08



Holly100 09



Holly100 10



Holly100 11



Holly100 12



Holly100 13



Holly100 14



Holly100 15

Specifications & Approved installation methods

Style Name: Holly100 冬青100
 Face Yarn: 100%PP
 Gauge: 1/5G +1/5G
 Construction: Loop
 Pile Height: 3mm
 Pile Weight: 14 oz/yd2
 Backing: PVC with fiberglass
 Tile size: 50CM * 50CM



Quarter-turn



02

产品展示 冬青200

PRODUCT SHOW



Holly200-01

Holly200-02

Holly200-03

Holly200-04

Holly200-05



Holly200-06

Holly200-07

Holly200-08

Holly200-09

Holly200-10

Specifications & Approved installation methods

Style Name: Holly200 冬青200

Face Yarn: 100%PP

Gauge: 1/10G

Construction : Loop

Pile Height: 3mm

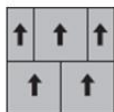
Pile Weight: 15 oz/yd2

Backing: PVC with fiberglass

Tile size : 50CM * 50CM



Quarter-turn



Brick



02

产品展示 冬青300

PRODUCT SHOW



Holly300 01



Holly300 02



Holly300 03



Holly300 04



Holly300 05



Holly300 06



Holly300 07



Holly300 08



Holly300 09



Holly300 10



Holly300 11



Holly300 12



Holly300 13



Holly300 14



Holly300 15



Holly300 16

Specifications & Approved installation methods

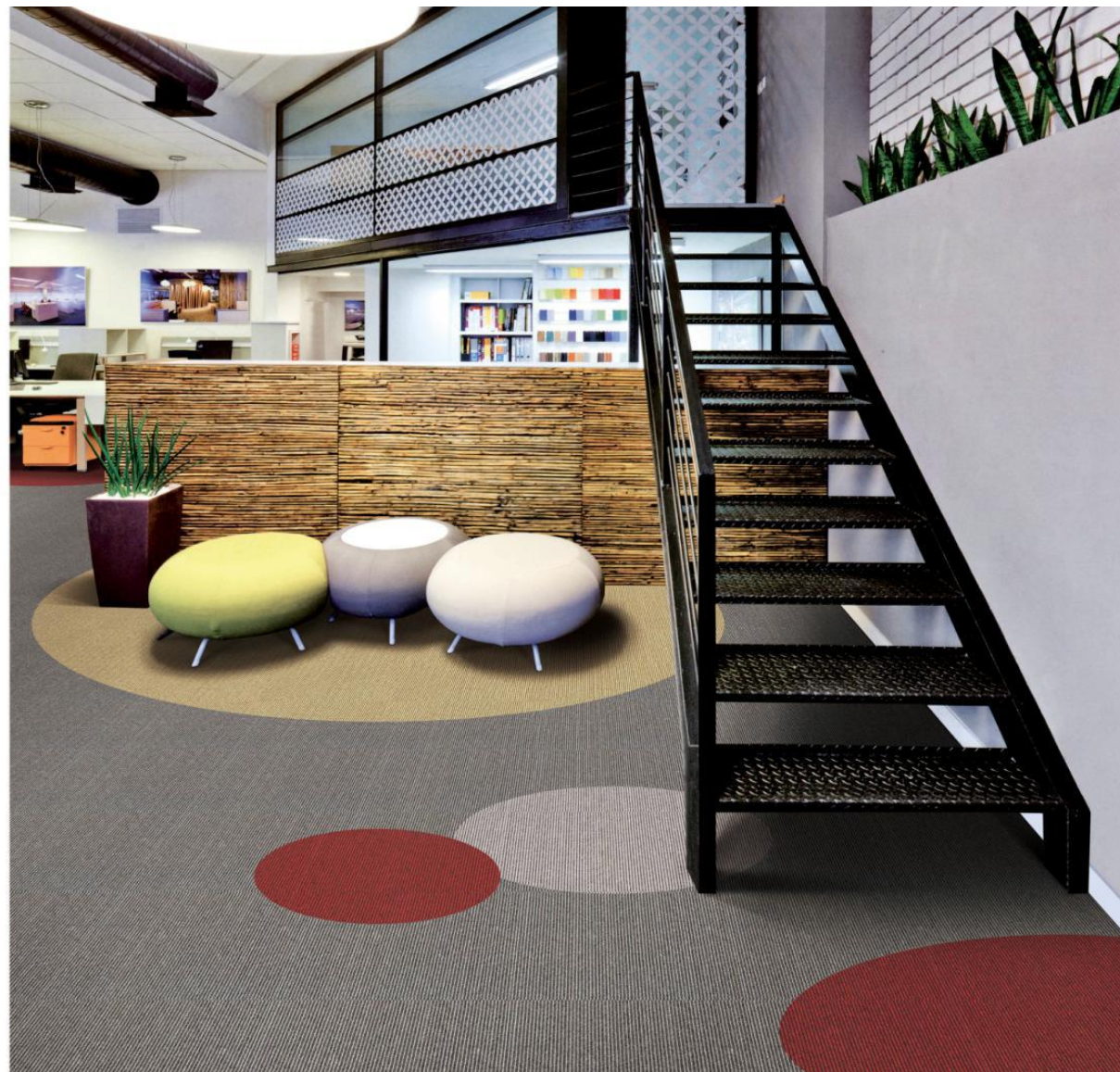
Style Name: Holly300 冬青300
 Face Yarn: 100%PP
 Gauge: 1/5G+1/5G
 Construction: Loop
 Pile Height: 3mm
 Pile Weight: 15 oz/yd2
 Backing: PVC with fiberglass
 Tile size: 50CM * 50CM



Quarter-turn



Brick



产品展示 冬青400

PRODUCT SHOW



Specifications & Approved installation methods

Style Name: Holly400 冬青400
 Face Yarn: 100%PP
 Gauge: 1/10G
 Construction: Loop
 Pile Height: 3mm
 Pile Weight: 15 oz/yd²
 Backing: PVC with fiberglass
 Tile size: 50CM * 50CM



Quarter-turn



Brick



02

产品展示 伏尔加

PRODUCT SHOW

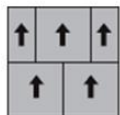


Specifications & Approved installation methods

Style Name: Volga 伏尔加
 Face Yarn: Beaulieu Nylon Yarns
 Gauge: 1/12 G
 Construction : Tufted , Textured Loop Pile
 Pile Height: 4.5mm
 Pile Weight: 19oz/yd²
 Backing: PVC with fiberglass
 Tile size : 50CM * 50CM



Quarter-turn



Brick



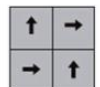
产品展示 高加索

PRODUCT SHOW



Specifications & Approved installation methods

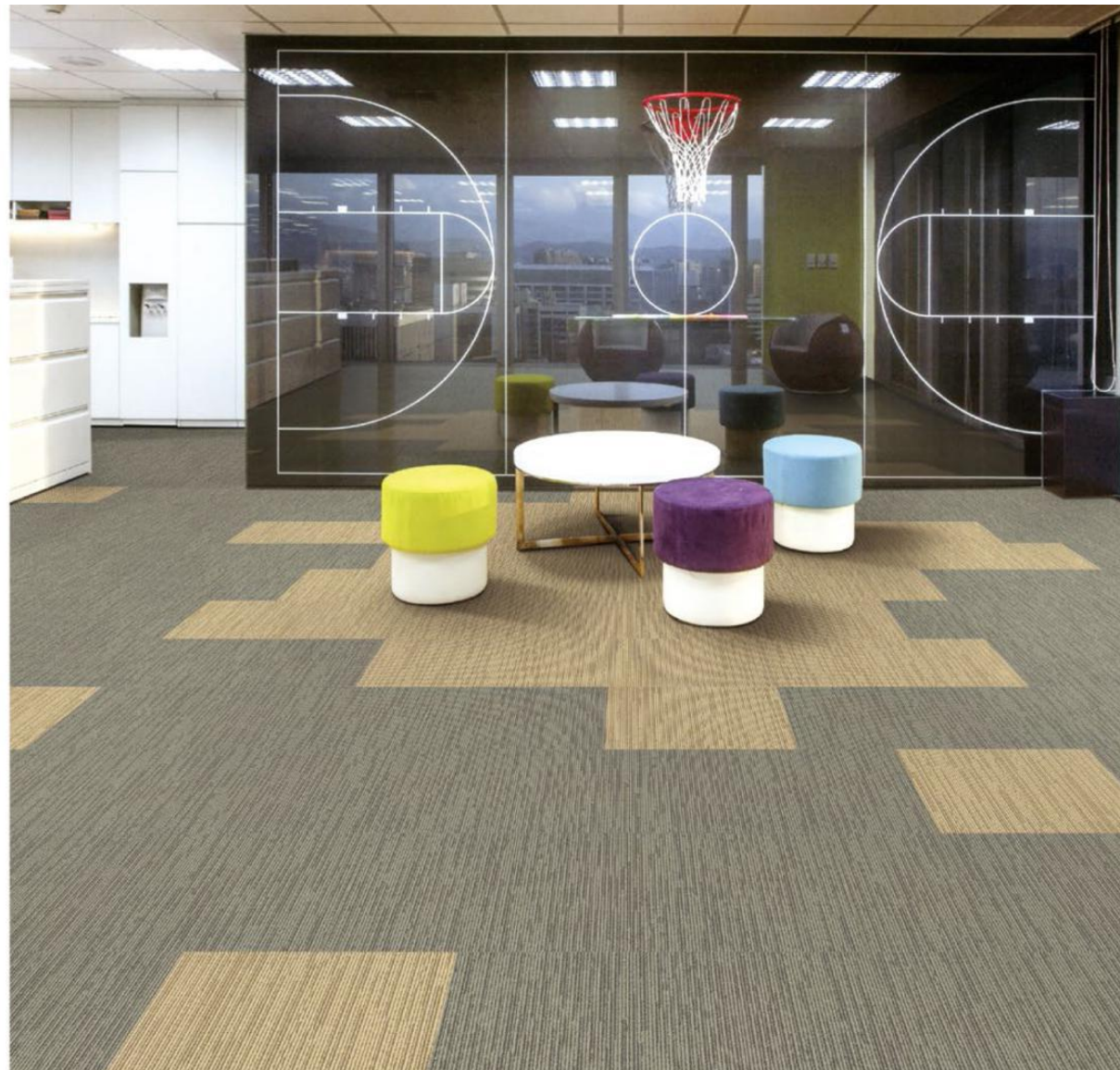
Style Name: Caucasus 高加索
 Face Yarn: Universal Nylon66
 Gauge: 1/12G
 Construction: Hi/Mi/Lo Loop
 Pile Height: 5-4-3mm
 Pile Weight: 18.5oz/yd2
 Backing: PVC with fiberglass
 Tile size: 50CM * 50CM



Quarter-turn



Brick



胡桃 (Hutao) — 01



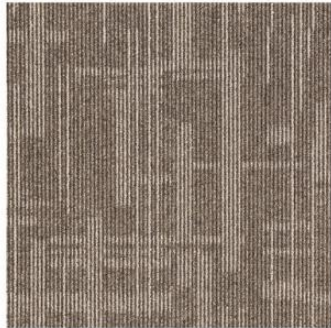
Specifications & Approved installation methods

Style Name: Hutao 胡桃
 Face Yarn: 100%PP
 Gauge: 1/10G
 Construction: Hi/Mi/Lo Loop
 Pile Height: 5- 4.3-2.8mm
 Pile Weight: 19.6 oz/yd2
 Backing: PVC with fiberglass
 Tile size: 25CM * 100CM

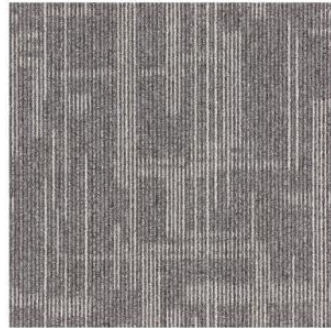




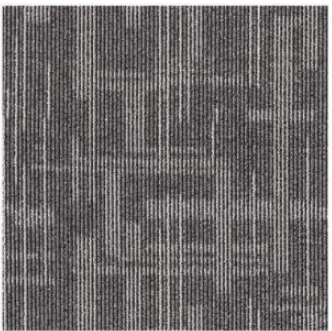
Populus Euphratica 01



Populus Euphratica 02



Populus Euphratica 03



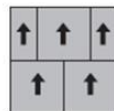
Populus Euphratica 04

Specifications & Approved installation methods

Style Name: Populus Euphratica 胡杨
 Face Yarn: 100%PP
 Gauge: 1/12G
 Construction: Hi/Mi/Lo Loop
 Pile Height: 4.5-4-3-2.5mm
 Pile Weight: 16-17 oz/yd²
 Backing: PVC with fiberglass
 Tile size: 50CM * 50CM



Quarter-turn



Brick



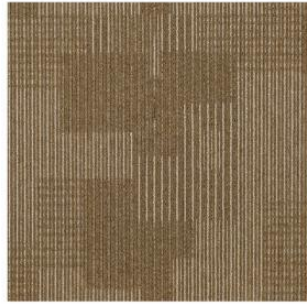
02

产品展示 黄杉

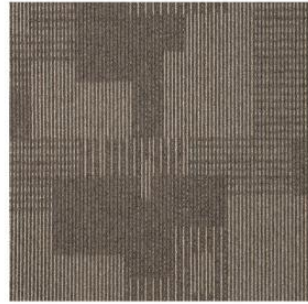
PRODUCT SHOW



Pseudotsuga01



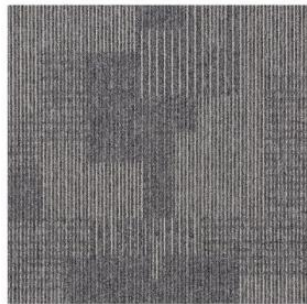
Pseudotsuga02



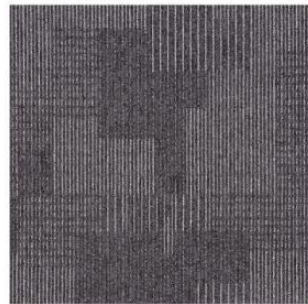
Pseudotsuga03



Pseudotsuga04



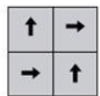
Pseudotsuga05



Pseudotsuga06

Specifications & Approved installation methods

Style Name: Pseudotsuga 黄杉
 Face Yarn: Separated Tricolor PP Yarn
 Gauge: 1/12 G
 Construction: Hi/Mi/Lo Loop
 Pile Height: 4-3.5-2.5mm
 Pile Weight: 16-17 oz/yd²
 Backing: PVC with fiberglass
 Tile size: 50CM * 50CM



Quarter-turn



Brick



02

产品展示 加尔达

PRODUCT SHOW



Garda01



Garda02



Garda03



Garda04



Garda05



Garda06



Garda07



Garda08



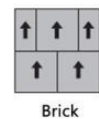
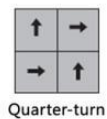
Garda09



Garda10

Specifications & Approved installation methods

Style Name: Garda 加尔达
 Face Yarn: Beaulieu Nylon Yarns
 Gauge: 1/12 G
 Construction: Hi/Mi/Lo Loop
 Pile Height: 4-3.5-2.5mm
 Pile Weight: 16 - 17 oz/yd²
 Backing: PVC with fiberglass
 Tile size: 50CM * 50CM



02

产品展示 金松

PRODUCT SHOW



Sciadopitys 01



Sciadopitys 02



Sciadopitys 03



Sciadopitys 04



Sciadopitys 05



Sciadopitys 06



Sciadopitys 07



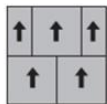
Sciadopitys 08

Specifications & Approved installation methods

Style Name: Sciadopitys 金松
 Face Yarn: Separated Tricolor PP Yarn
 Gauge: 1/12G
 Construction: Hi/Mi/Lo LOOP
 Pile Height: 4.5/4/2.5mm
 Pile Weight: 16-17 oz/yd²
 Backing: PVC with fiberglass
 Tile size: 50CM * 50CM



Quarter-turn



Brick





Cape 01



Cape 02



Cape 03



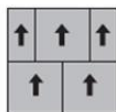
Cape 04

Specifications & Approved installation methods

Style Name: Cape 开普
 Face Yarn: Universal Nylon66
 Gauge: 1/12G
 Construction: Hi/Lo Loop
 Pile Height: 4.5-3 mm
 Pile Weight: 16-17 oz/yd²
 Backing: PVC with fiberglass
 Tile size: 50CM * 50CM



Quarter-turn



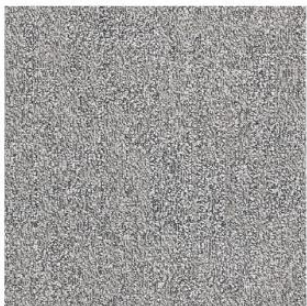
Brick



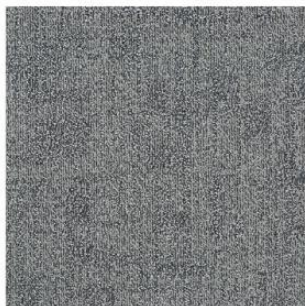
02

产品展示 科莫

PRODUCT SHOW



Como 01



Como 02



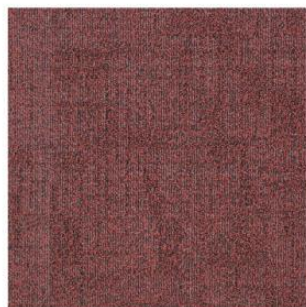
Como 03



Como 04



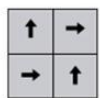
Como 05



Como 06

Specifications & Approved installation methods

Style Name: Como 科莫
 Face Yarn: Nylon6
 Gauge: 1/12 G
 Construction : Hi/Mi/Lo Loop
 Pile Height: 3-4-5mm
 Pile Weight: 22 oz/yd2
 Backing: PVC with fiberglass
 Tile size : 50CM * 50CM



Quarter-turn

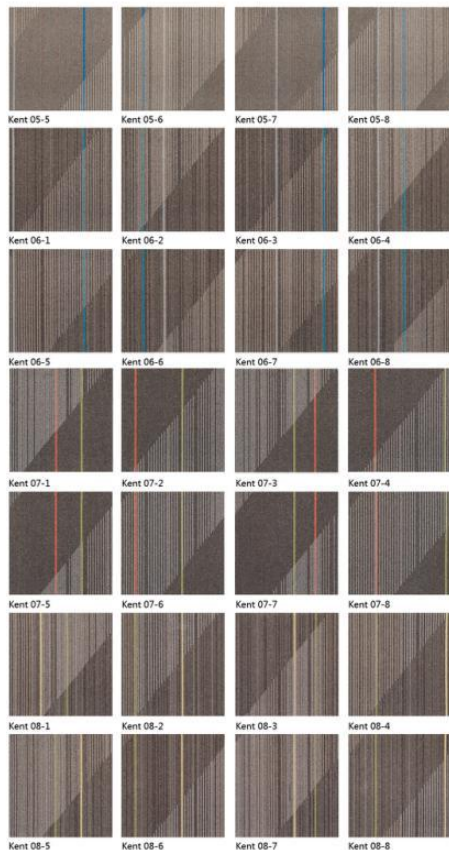
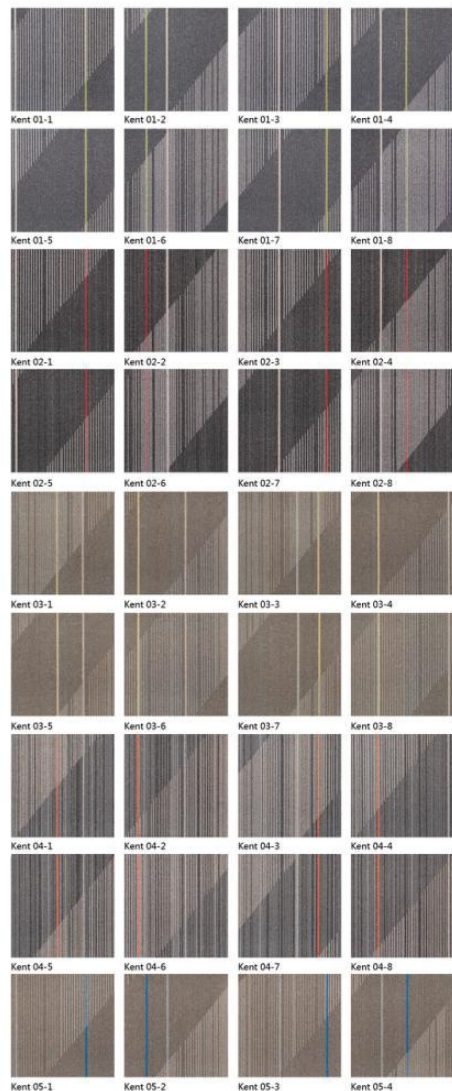


Brick



产品展示 肯特

PRODUCT SHOW



Specifications & Approved installation methods

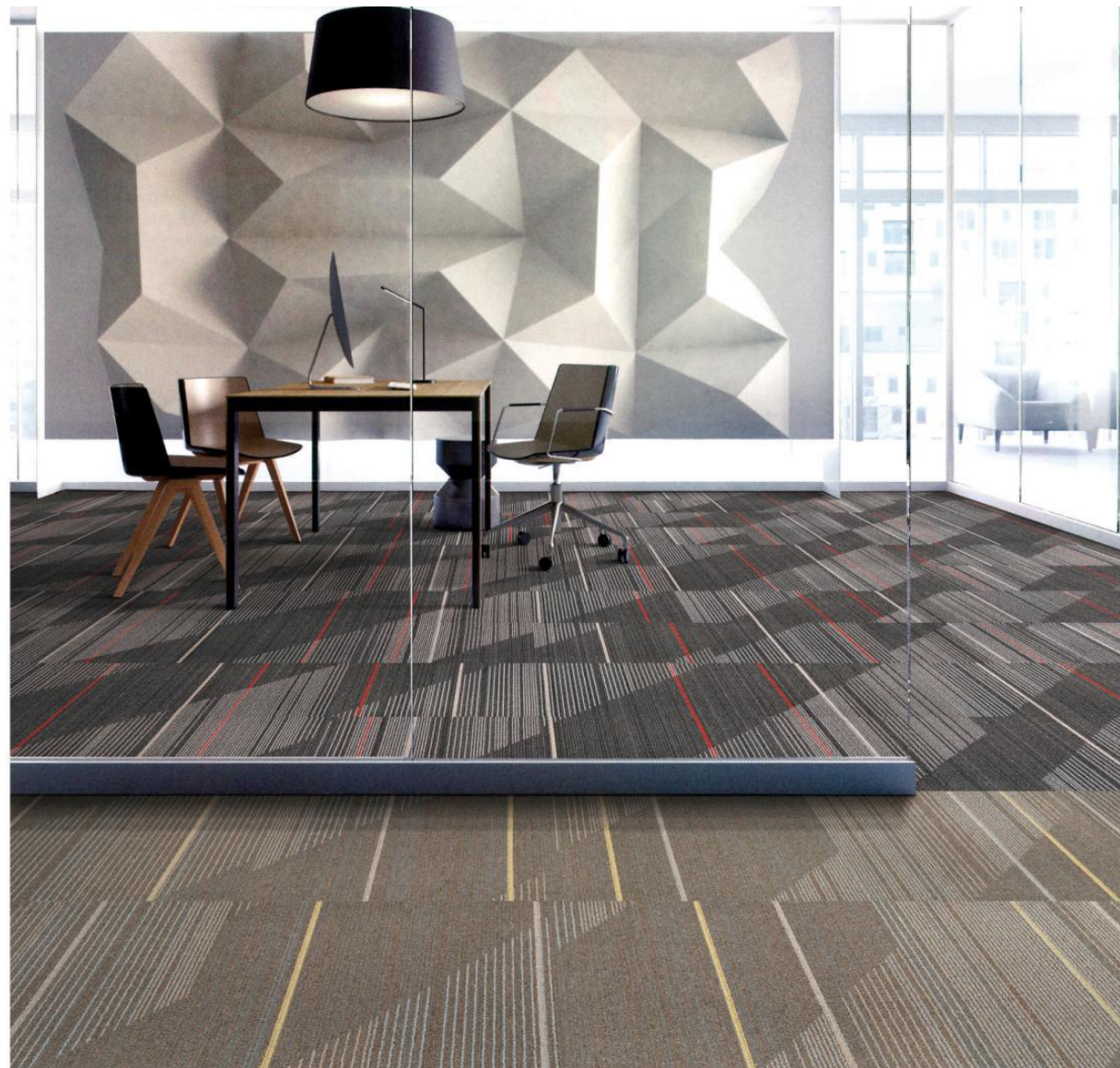
Style Name: Kent 肯特
 Face Yarn: Universal Nylon66
 Gauge: 1/12 G
 Construction: Hi/Mi/Lo Loop
 Pile Height: 5-4-2.5mm
 Pile Weight: 18 oz/yd2
 Backing: PVC with fiberglass
 Tile size: 50CM * 50CM



Quarter-turn

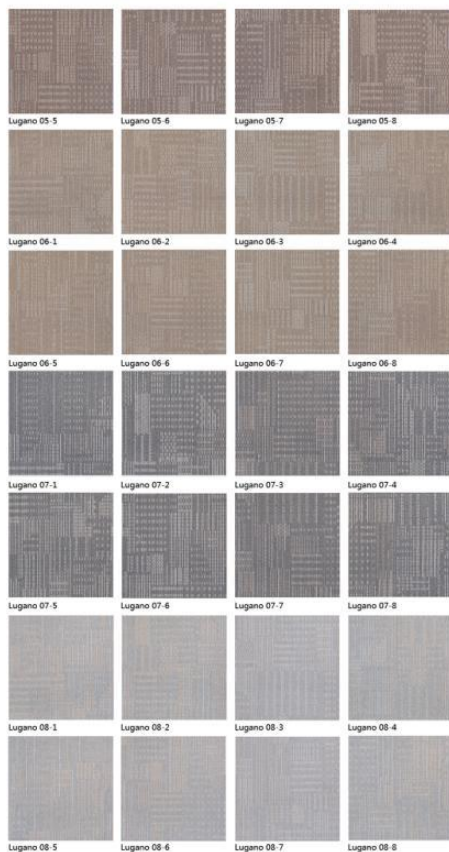
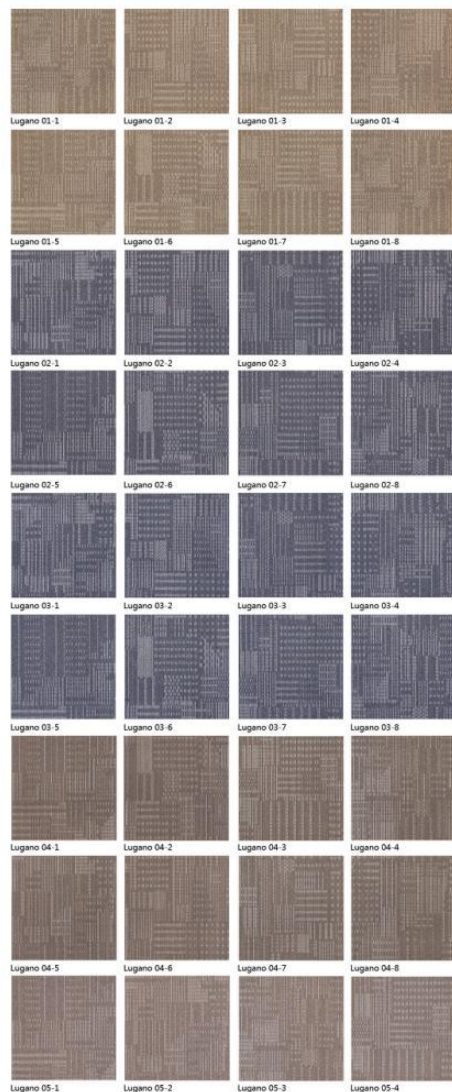


Brick



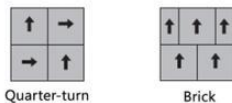
产品展示 卢加诺

PRODUCT SHOW



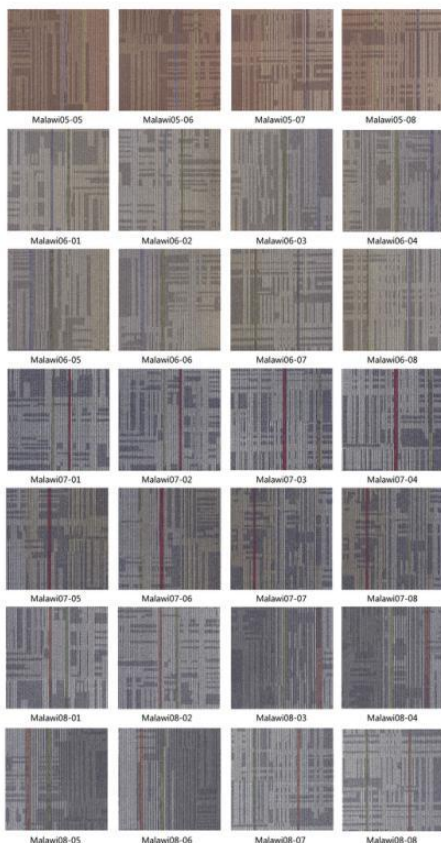
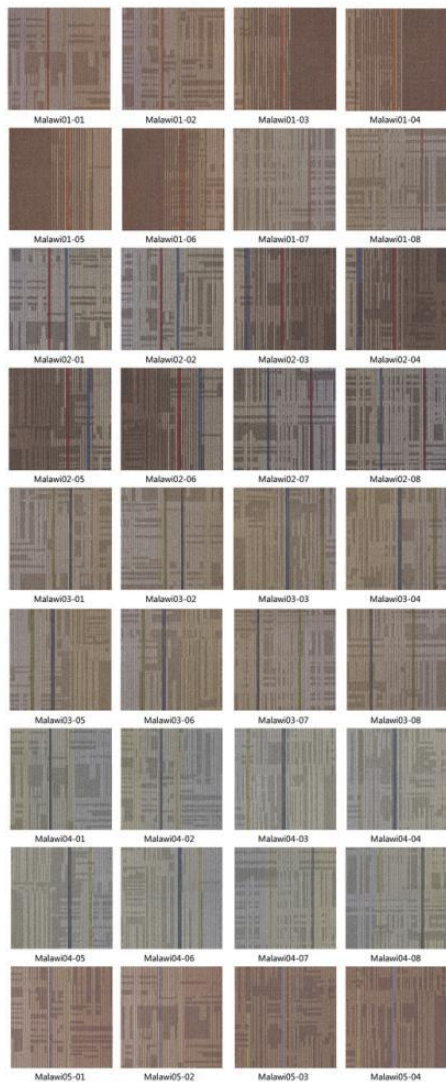
Specifications & Approved installation methods

Style Name: Lugano 卢加诺
 Face Yarn: Universal Nylon6
 Gauge: 1/12 G
 Construction: Hi/Mi/Lo Loop
 Pile Height: 5-4-2.5mm
 Pile Weight: 18 oz/yd2
 Backing: PVC with fiberglass
 Tile size: 50CM * 50CM



产品展示 安第斯

PRODUCT SHOW



Specifications & Approved installation methods

Style Name: Malawi 马拉维
 Face Yarn: Universal Nylon6+Nylon66
 Gauge: 1/12 G
 Construction: Hi/Mi/Lo Loop
 Pile Height: 4-3.5-2.5mm
 Pile Weight: 16-17 oz/yd2
 Backing: PVC with fiberglass
 Tile size: 50CM * 50CM



Quarter-turn



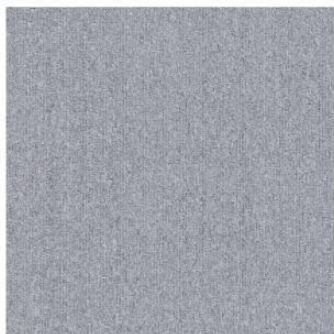
Brick



02

产品展示 尼斯

PRODUCT SHOW



NiSi 01



NiSi 02



NiSi 03



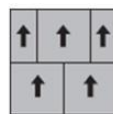
NiSi 04

Specifications & Approved installation methods

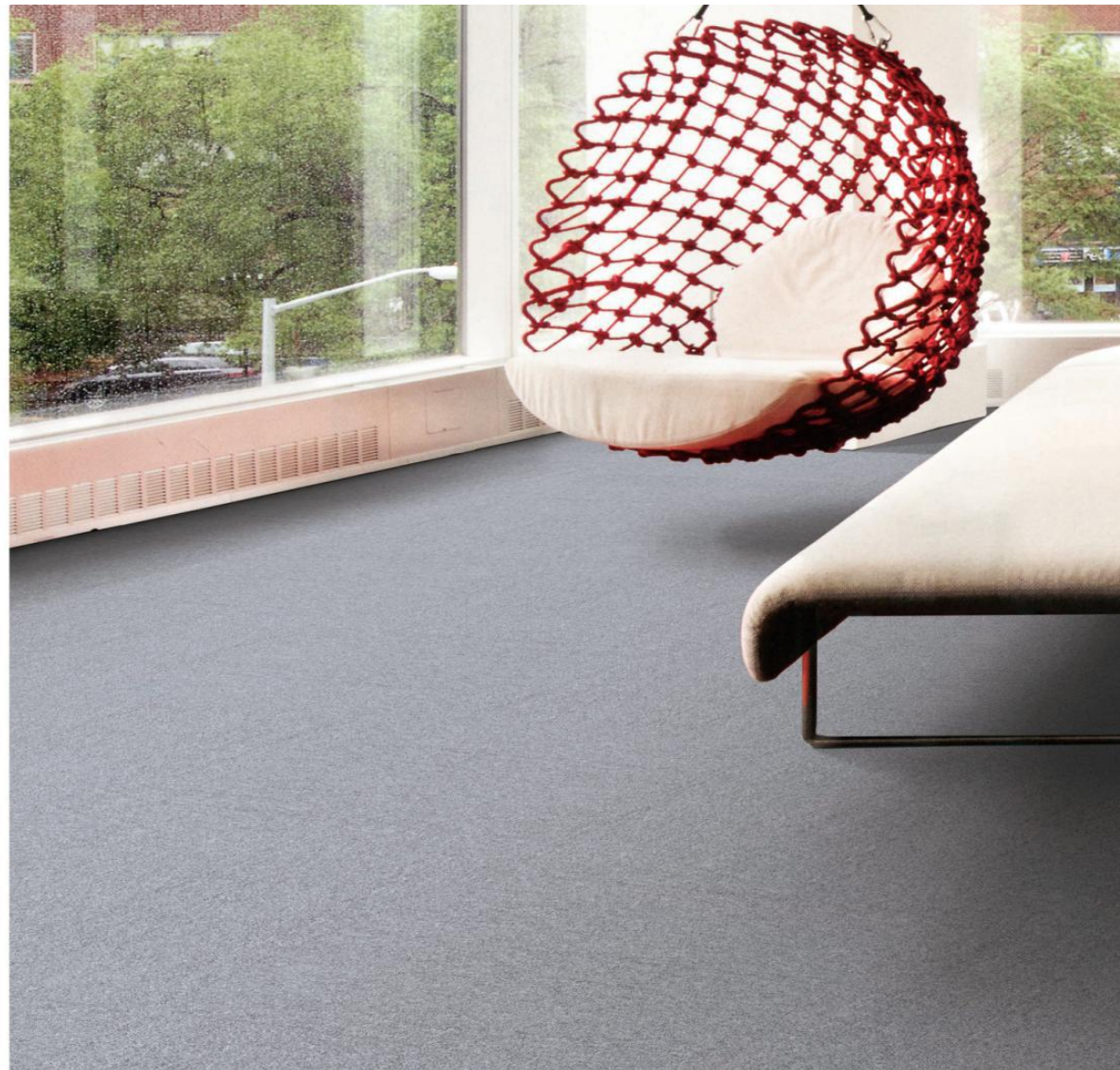
Style Name: NiSi 尼斯
Face Yarn: Nylon6
Gauge: 1/10 G
Construction : Loop
Pile Height: 3mm
Pile Weight: 14oz/yd2
Backing: PVC with fiberglass
Tile size : 50CM * 50CM



Quarter-turn



Brick



02

产品展示 瑞香

PRODUCT SHOW



Thymelaeaceae 01



Thymelaeaceae 02



Thymelaeaceae 03



Thymelaeaceae 04



Thymelaeaceae 05



Thymelaeaceae 06



Thymelaeaceae 07



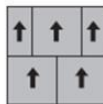
Thymelaeaceae 08

Specifications & Approved installation methods

Style Name: Thymelaeaceae 瑞香
Face Yarn: Separated Tricolor PP Yarn
Gauge: 1/6G +1/6G
Construction: Hi/Mi/Lo Loop
Pile Height: 4.5/4/3/2.5mm
Pile Weight: 16-17 oz/yd2
Backing: PVC with fiberglass
Tile size: 50CM * 50CM



Quarter-turn



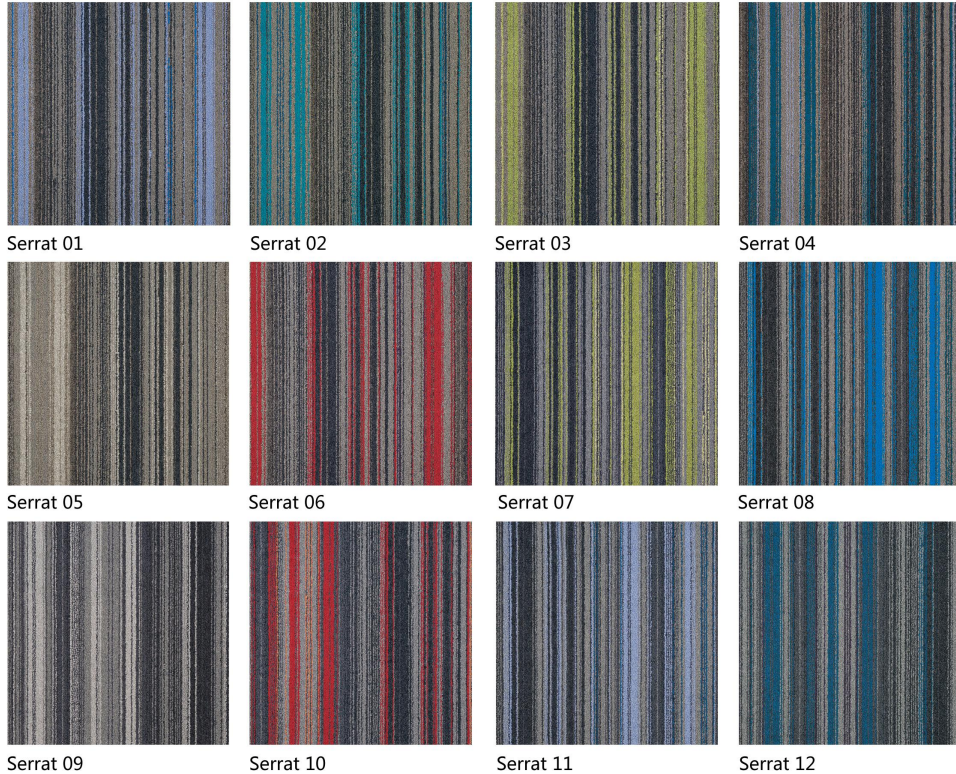
Brick



02

产品展示 塞拉特

PRODUCT SHOW



Specifications & Approved installation methods

Style Name: Serrat 塞拉特
 Face Yarn: 100%Universal Fibers Type66
 Gauge: 1/12G
 Construction : Loop
 Pile Height: 4.5mm
 Pile Weight: 21oz/yd2
 Backing: PVC with fiberglass
 Tile size : 50CM * 50CM



Quarter-turn



Brick



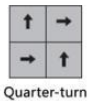
产品展示 圣马丁

PRODUCT SHOW



Specifications & Approved installation methods

Style Name: Saint Martin 圣马丁
 Face Yarn: Universal Nylon6
 Gauge: 1/12 G
 Construction: Hi/Mi/Lo Loop
 Pile Height: 4-3.5-2.5mm
 Pile Weight: 16-17 oz/yd2
 Backing: PVC with fiberglass
 Tile size: 50CM * 50CM



02

产品展示 水杉

PRODUCT SHOW



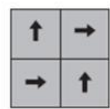
Metasequoia01 Metasequoia02 Metasequoia03 Metasequoia04 Metasequoia05



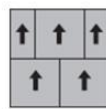
Metasequoia06 Metasequoia07 Metasequoia08 Metasequoia09 Metasequoia10

Specifications & Approved installation methods

Style Name: Metasequoia 水杉
 Face Yarn: Separated Tricolor PP Yarn
 Gauge: 1/12G
 Construction: Hi/Mi/Lo Loop
 Pile Height: 4/3/2.8mm
 Pile Weight: 16-17 oz/yd²
 Backing: PVC with fiberglass
 Tile size: 50CM * 50CM



Quarter-turn



Brick



产品展示 苏必略

PRODUCT SHOW



Superior 01-1 Superior 01-2 Superior 01-3 Superior 01-4



Superior 07-1 Superior 07-2 Superior 07-3 Superior 07-4



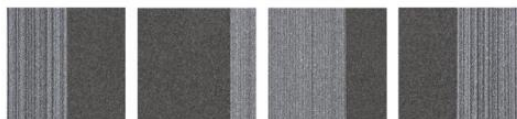
Superior 02-1 Superior 02-2 Superior 02-3 Superior 02-4



Superior 08-1 Superior 08-2 Superior 08-3 Superior 08-4



Superior 03-1 Superior 03-2 Superior 03-3 Superior 03-4



Superior 04-1 Superior 04-2 Superior 04-3 Superior 04-4



Superior 05-1 Superior 05-2 Superior 05-3 Superior 05-4



Superior 06-1 Superior 06-2 Superior 06-3 Superior 06-4

Specifications & Approved installation methods

Style Name: Superior 苏比略
 Face Yarn: Beaulieu Nylon Yarns
 Gauge: 1/12 G
 Construction: Tufted, Textured Loop Pile
 Pile Height: 4.5mm
 Pile Weight: 19 oz/yd²
 Backing: PVC with fiberglass
 Tile size: 50CM * 50CM



Quarter-turn



Brick



02

产品展示 塔纳

PRODUCT SHOW



Tanna01



fanna02



Tanna03



Tanna04



Tanna05



fanna06



Tanna07



Tanna08



Tanna09



fanna10



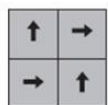
Tanna11



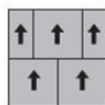
Tanna12

Specifications & Approved installation methods

Style Name: Tanna 塔纳
 Face Yarn: Beaulieu Nylon Yarns
 Gauge: 1/12 G
 Construction: Hi/Mi/Lo Loop
 Pile Height: 4.4-4.2-2.9mm
 Pile Weight: 19 oz/yd²
 Backing: PVC with fiberglass
 Tile size: 50CM * 50CM



Quarter-turn



Brick



产品展示 维多利亚

PRODUCT SHOW



Tanna01



fanna02



Tanna03



Tanna04



Tanna05



fanna06



Tanna07



Tanna08



Tanna09



fanna10



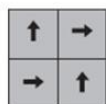
Tanna11



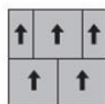
Tanna12

Specifications & Approved installation methods

Style Name: Tanna 塔纳
 Face Yarn: Beaulieu Nylon Yarns
 Gauge: 1/12 G
 Construction: Hi/Mi/Lo Loop
 Pile Height: 4.4-4.2-2.9mm
 Pile Weight: 19 oz/yd2
 Backing: PVC with fiberglass
 Tile size: 50CM * 50CM



Quarter-turn



Brick



02

产品展示 维纳恩

PRODUCT SHOW



Vanern 01



Vanern 02



Vanern 03



Vanern 04



Vanern 05



Vanern 06



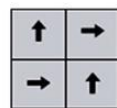
Vanern 07



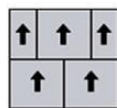
Vanern 08

Specifications & Approved installation methods

Style Name: Vanern 维纳恩
 Face Yarn: Universal Nylon 6+Nylon 66
 Gauge: 1/6G+1/6G
 Construction: Hi/Mi/Lo Loop
 Pile Height: 4.5-4-3.5-3mm
 Pile Weight: 16-17 oz/yd2
 Backing: PVC with fiberglass
 Tile size: 50CM * 50CM



Quarter-turn



Brick



02

产品展示 温尼伯

PRODUCT SHOW



Winnipeg-01

Winnipeg-02

Winnipeg-03

Winnipeg-04

Winnipeg-05



Winnipeg-06

Winnipeg-07

Winnipeg-08

Winnipeg-09

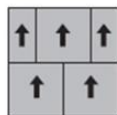
Winnipeg-10

Specifications & Approved installation methods

Style Name: Winnipeg 温尼伯
 Face Yarn: Beaulieu Nylon Yarns
 Gauge: 1/12G
 Construction: Hi/Mi/Lo Loop
 Pile Height: 4.8-3.8-3mm
 Pile Weight: 15.5oz/yd²
 Backing: PVC with fiberglass
 Tile size: 50CM * 50CM



Quarter-turn



Brick



02

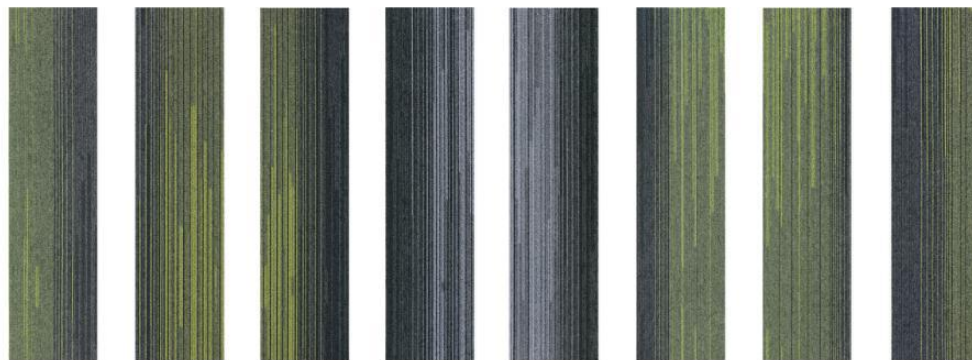
产品展示 文竹

PRODUCT SHOW

Wenzhun 01



Wenzhun 06



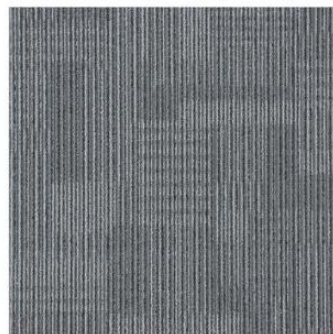
Specifications & Approved installation methods

Style Name: Wenzhu 文竹
Face Yarn: 100%PP
Gauge: 1/12G
Construction: Hi/Mi/Lo Loop
Pile Height: 4.5-3.2mm
Pile Weight: 15.2oz/yd2
Backing: PVC with fiberglass
Tile size: 25CM * 100CM





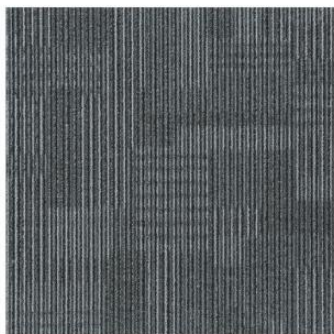
XiangShan 01



XiangShan 02



XiangShan 03



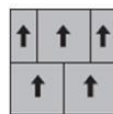
XiangShan 04

Specifications & Approved installation methods

Style Name: XiangShan 湘杉
 Face Yarn: 100%PP
 Gauge: 1/12G
 Construction: Hi/Mi/Lo Loop
 Pile Height: 4.2-3.2-2.8mm
 Pile Weight: 15 oz/yd²
 Backing: PVC with fiberglass
 Tile size: 50CM * 50CM



Quarter-turn



Brick



02

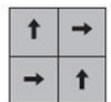
产品展示 休伦100

PRODUCT SHOW

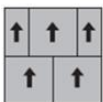


Specifications & Approved installation methods

Style Name: Huron100 休伦100
 Face Yarn: Beaulieu Nylon Yarns
 Gauge: 1/10 G
 Construction : Loop
 Pile Height: 3mm
 Pile Weight: 15 oz/yd2
 Backing: PVC with fiberglass
 Tile size : 50CM * 50CM



Quarter-turn



Brick



产品展示 休伦200

PRODUCT SHOW



Huron 200-01 Huron 200-02 Huron 200-03 Huron 200-04 Huron 200-05



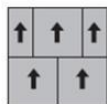
Huron 200-06 Huron 200-07 Huron 200-08 Huron 200-09 Huron 200-10

Specifications & Approved installation methods

Style Name: Huron 200 休伦200
 Face Yarn: Beaulieu Nylon Yarns
 Gauge: 1/10G
 Construction : Loop
 Pile Height: 3mm
 Pile Weight: 15 oz/yd2
 Backing: PVC with fiberglass
 Tile size : 50CM * 50CM



Quarter-turn



Brick



产品展示 棕竹/石竹

PRODUCT SHOW



Zongzhu 01



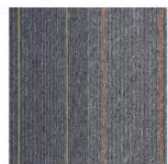
Zongzhu 02



Zongzhu 03



Zongzhu 04



Zongzhu 05



Zongzhu 06



Shizhu 01



Shizhu 02



Shizhu 03



Shizhu 04



Shizhu 05



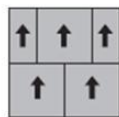
Shizhu 06

Specifications & Approved installation methods

Style Name: Zongzhu棕竹
 Face Yarn: 100%PP
 Gauge: 1/10 G
 Construction : Loop
 Pile Height: 3mm
 Pile Weight: 13.3oz/yd²
 Backing: Bi tumen
 Tile size : 50CM * 50CM



Quarter-turn



Brick

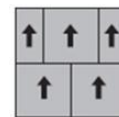


Specifications & Approved installation methods

Style Name: Shizhu石竹
 Face Yarn: 100%PP
 Gauge: 1/10 G
 Construction : Loop
 Pile Height: 3mm
 Pile Weight: 13.3oz/yd²
 Backing: Bi tumen
 Tile size : 50CM * 50CM



Quarter-turn



Brick

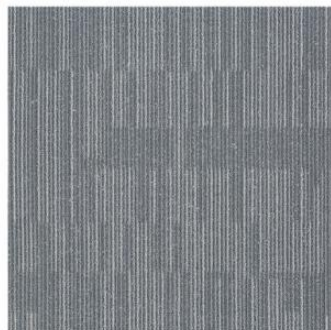


产品展示 云杉

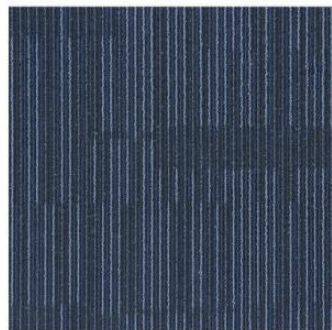
PRODUCT SHOW



YunSHan 01



YunSHan 02



YunSHan 03



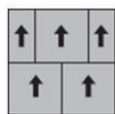
YunSHan 04

Specifications & Approved installation methods

Style Name: YunSHan 云杉
 Face Yarn: 100%PP
 Gauge: 1/12G
 Construction: Hi/Mi/Lo Loop
 Pile Height: 4.5-3-2.8mm
 Pile Weight: 15 oz/yd2
 Backing: PVC with fiberglass
 Tile size: 50CM * 50CM



Quarter-turn



Brick



产品展示 雪松

PRODUCT SHOW



XueSong 01

XueSong 02

XueSong 03

XueSong 04

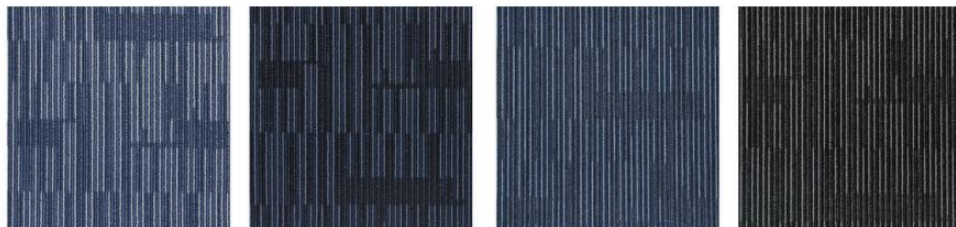


XueSong 05

XueSong 06

XueSong 07

XueSong 08



XueSong 09

XueSong 10

XueSong 11

XueSong 12

Specifications & Approved installation methods

Style Name: XueSong 雪松
 Face Yarn: 100% PP
 Gauge: 1/12G
 Construction: Hi/Mi/Lo Loop
 Pile Height: 5-3.8-2.8 mm
 Pile Weight: 14 oz/yd²
 Backing: PVC with fiberglass
 Tile size: 50CM * 50CM



Quarter-turn



Brick





WEISS SERIES

COMMERCIAL CARPET

UNIQUES

WEISS Series

Commercial Carpet

Specification

STYLE NAME:	WEISS (韦斯)
CONSTRUCTION:	TUFTED.TEXTURED LOOP PILE
FACE YARN:	PA
DYE METHOD:	SOLUTION DYED
GAUGE:	1/12
PILE HEIGHT:	5.6-2.8 mm
PILE WEIGHT:	19oz/yd
BACKING:	PVC
TILE SIZE:	50×50 cm



Weiss 01



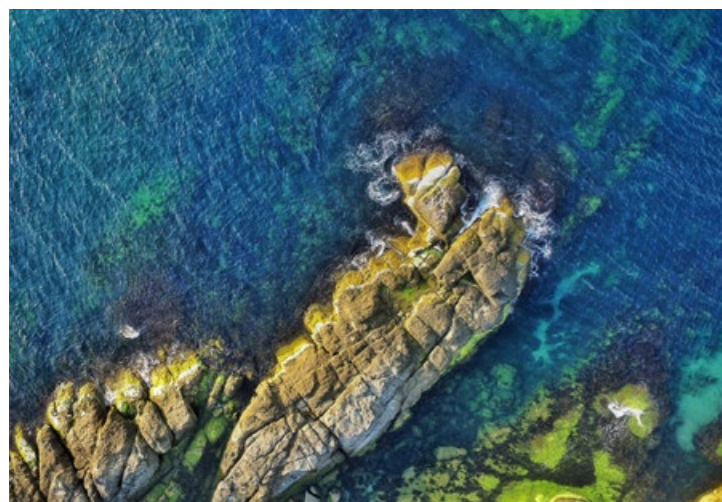
Weiss 02



Weiss 03



Weiss 04



Weiss 03 DIFFUSE



Weiss 01 ISOLATION
Weiss 03 DIFFUSE
Weiss 04 SOLITUDE







TAIPING Series

Commercial Carpet

Specification

STYLE NAME:	TAIPING (太平)
CONSTRUCTION:	TUFTED.TEXTURED LOOP PILE TIP SHEARED
FACE YARN:	PA
DYE METHOD:	SOLUTION DYED
GAUGE:	1/10
PILE HEIGHT:	6.5-4.5 mm
PILE WEIGHT:	22 oz/yd ²
BACKING:	PVC
TILE SIZE:	25×100 cm



Taiping 01 ufo



Taiping 02 Improbable



Taiping 03 glazed granite



Taiping 04 artillerg



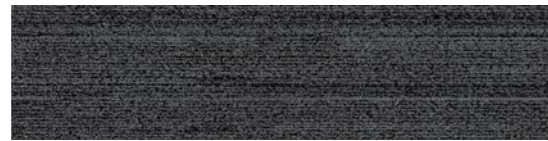
Taiping 05 lazy afternoon



Taiping 06 cool charcoal



Taiping 07 gray flannel



Taiping 08 onyx



Taiping 04 artillerg / Taiping 05 lazy afternoon



Taiping 02 Improbable



Taiping 03 glazed granite





Taiping 06 cool charcoal



Taiping 07 gray flannel



Taiping 08 onyx



Taiping 04 artillerg



Taiping 05 lazy afternoon

QIANDAO Series

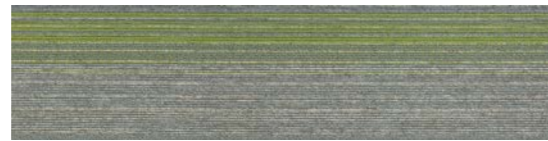
Commercial Carpet

Specification

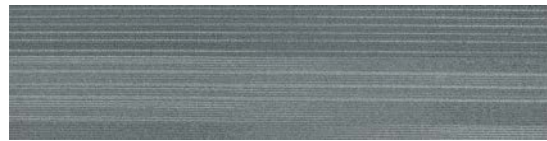
STYLE NAME:	QIANDAO (千岛)
CONSTRUCTION:	TUFTED.TEXTURED LOOP PILE
FACE YARN:	PA
DYE METHOD:	SOLUTION DYED
GAUGE:	1/12
PILE HEIGHT:	5-3.5 mm
PILE WEIGHT:	17oz/yd ²
BACKING:	PVC
TILE SIZE:	25×100 cm



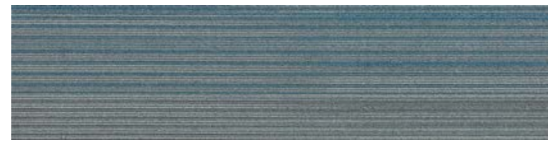
QIANDAO 01A sharkskin



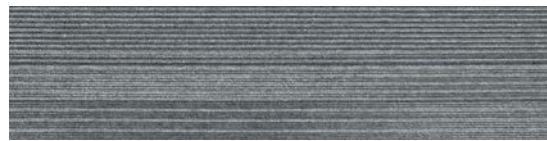
QIANDAO 01B sharkskin/dark citation



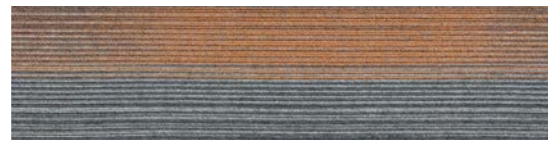
QIANDAO 02A griffin



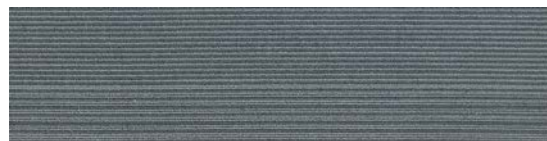
QIANDAO 02B griffin/blue moon



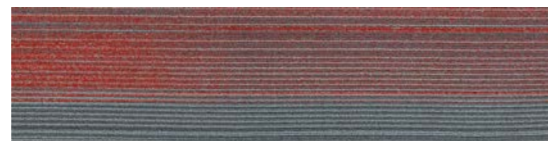
QIANDAO 03A balsam green



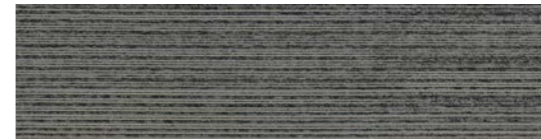
QIANDAO 03B balsam green/apricot buff



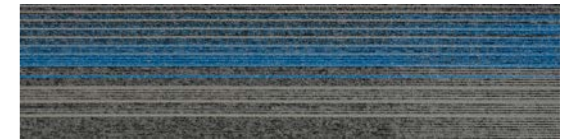
QIANDAO 04A turbulence



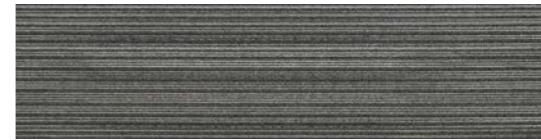
QIANDAO 04B turbulence/valiant poppy



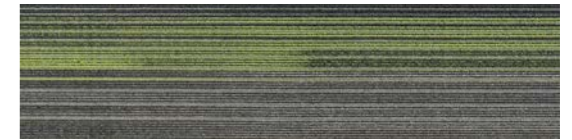
QIANDAO 05A obsidian



QIANDAO 05B obsidian/swedish blue



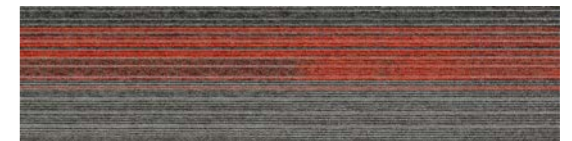
QIANDAO 06A gray pinstripe



QIANDAO 06B gray pinstripe/herbal garden



QIANDAO 07A crocodile



QIANDAO 07B crocodile/mandarin red



QIANDAO 08A forged Iron



QIANDAO 08B forged Iron/blithe

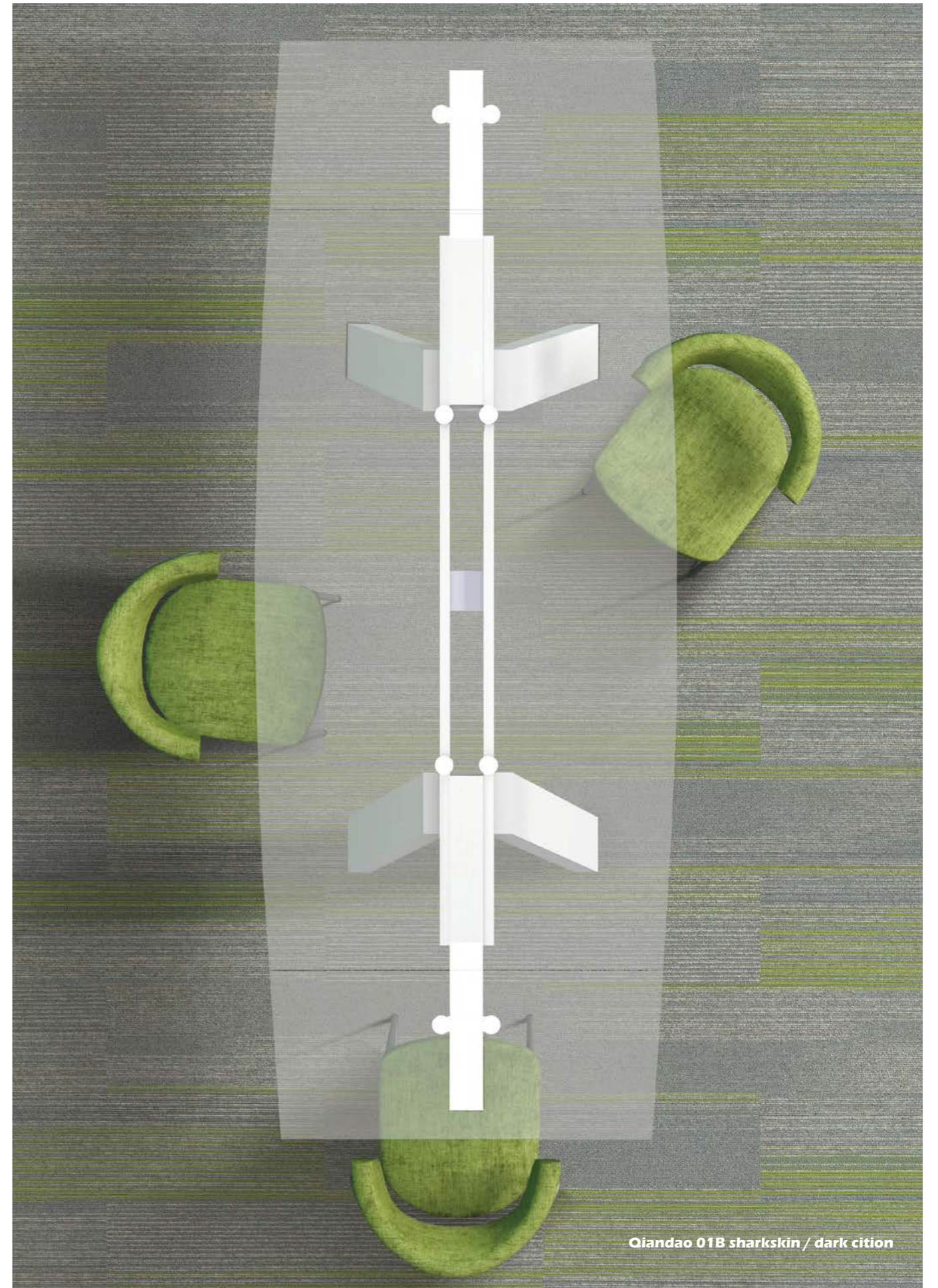




Qiandao 02B griffin / blue moon
Qiandao 03A balsam green
Qiandao 08B forged iron / blithe



Qiandao 06B gray pinstripe / herbal garden



Qiandao 01B sharkskin / dark cition



Qiandao 01B sharkskin / dark cition
Qiandao 06B gray pinstripe / herbal garden



Qiandao 08B forged Iron / blithe



Qiandao 05B obsidian / swedish blue



Qiandao 02B griffin / blue moon





Qiandao 07B crocodile / mandarin red



Qiandao 03B balsam green / apricot buff

MILAN Series

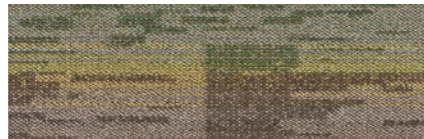
Commercial Carpet

Specification

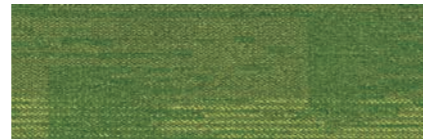
STYLE NAME:	MILAN (米兰)
CONSTRUCTION:	TUFTED.TEXTURED LOOP PILE
FACE YARN:	PP
DYE METHOD:	SOLUTION DYED
GAUGE:	1/12
PILE HEIGHT:	5.3-3 mm
PILE WEIGHT:	18 oz/yd ²
BACKING:	PVC
TILE SIZE:	25×100 cm



MiLan A 01 Mushroom



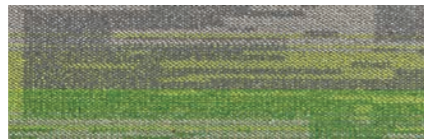
MiLan B 01 Mushroom/Grass



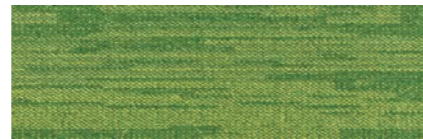
MiLan C 01 Grass



MiLan A 02 Taupe



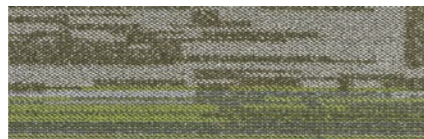
MiLan B 02 Taupe/GREENERY



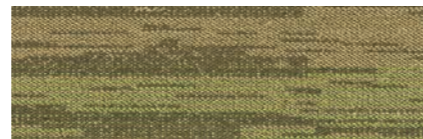
MiLan C 02 GREENERY



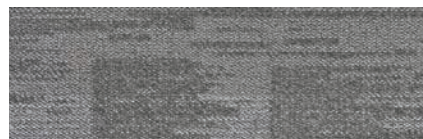
MiLan A 03 Fog



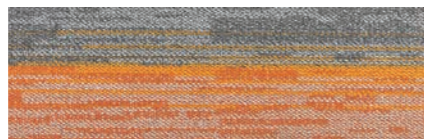
MiLan B 03 Fog/Citron



MiLan C 03 Citron



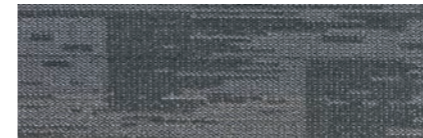
MiLan A 04 Greige



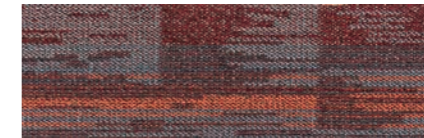
MiLan B 04 Greige/Persimmon



MiLan C 04 Persimmon



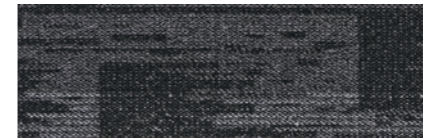
MiLan A 05 Iron



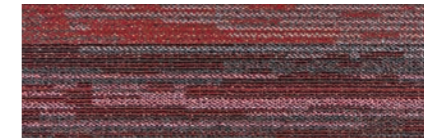
MiLan B 05 Iron/Poppy



MiLan C 05 Poppy



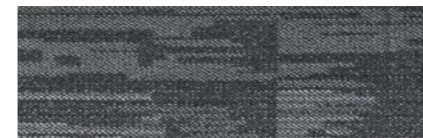
MiLan A 06 Smoke



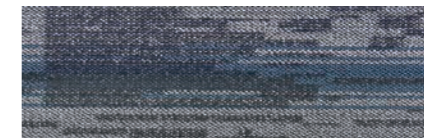
MiLan B 06 Smoke/Magenta



MiLan C 06 Magenta



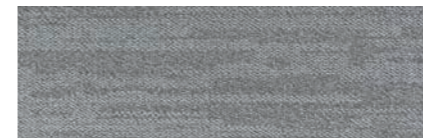
MiLan A 07 Granite



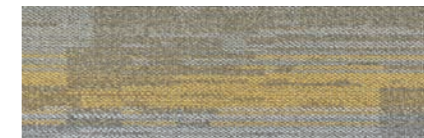
MiLan B 07 Granite/Azure



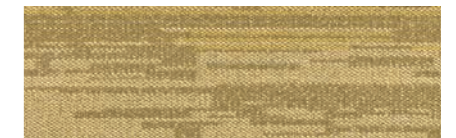
MiLan C 07 Azure



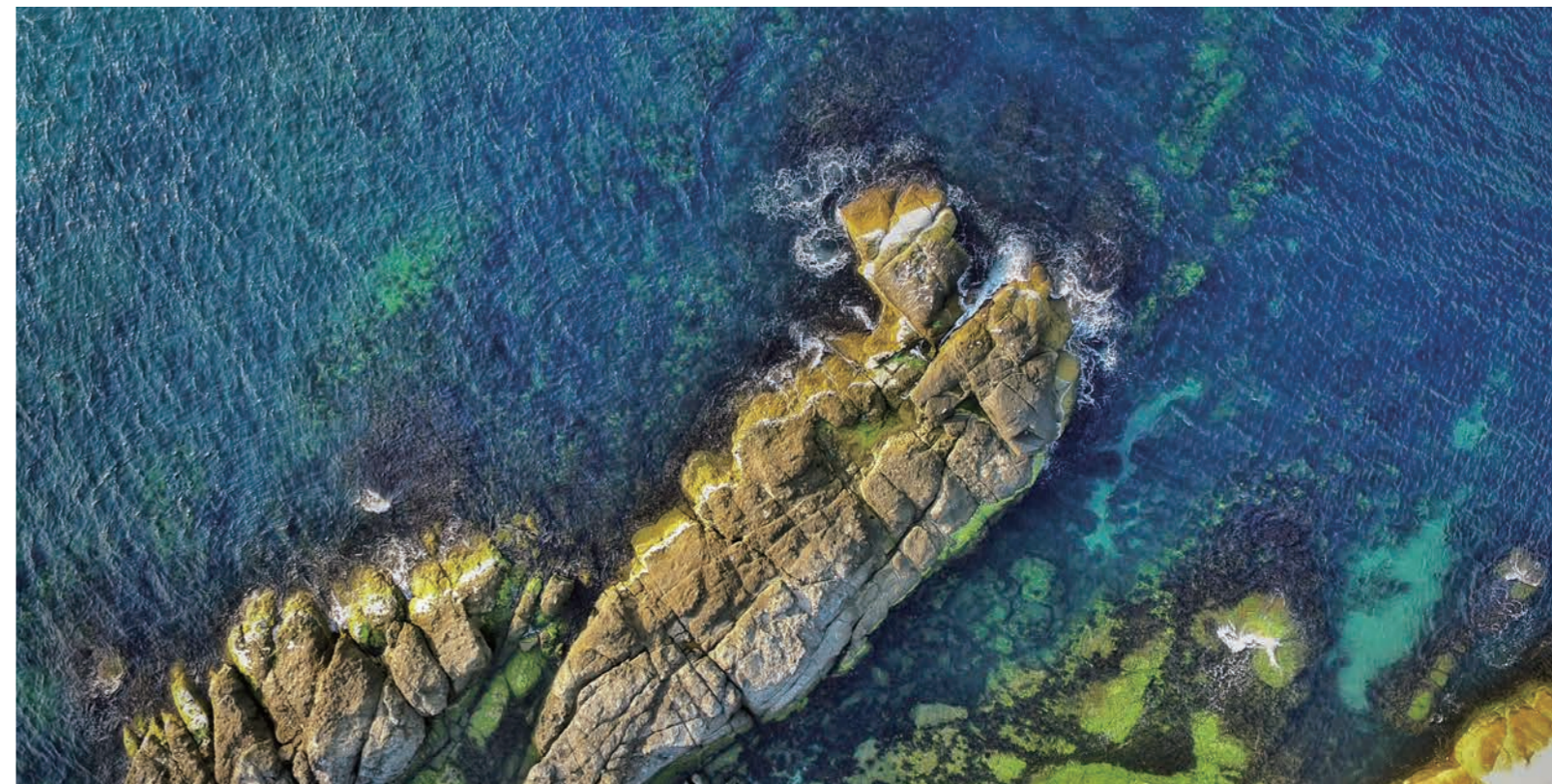
MiLan A 08 Mist



MiLan B 08 Mist/Marigoldblithe



MiLan C 08 Marigold





MiLan A 02 Taupe
MiLan B 02 Taupe/GREENERY
MiLan C 02 GREENERY



MiLan A 03 Fog
MiLan B 03 Fog/Citron
MiLan C 03 Citron



MiLan A 04 Greige
MiLan B 04 Greige/Persimmon
MiLan C 04 Persimmon



MiLan A 08 Mist
MiLan B 08 Mist/Marigold
MiLan C 08 Marigold



MiLan A 07 Granite
MiLan B 07 Granite/Azure
MiLan C 07 Azure



MiLan A 03 Fog
MiLan B 07 Granite/Azure



MiLan A 04 Greige
MiLan C 01 Grass



MiLan B 06 Smoke/Magenta
MiLan A 06 Smoke



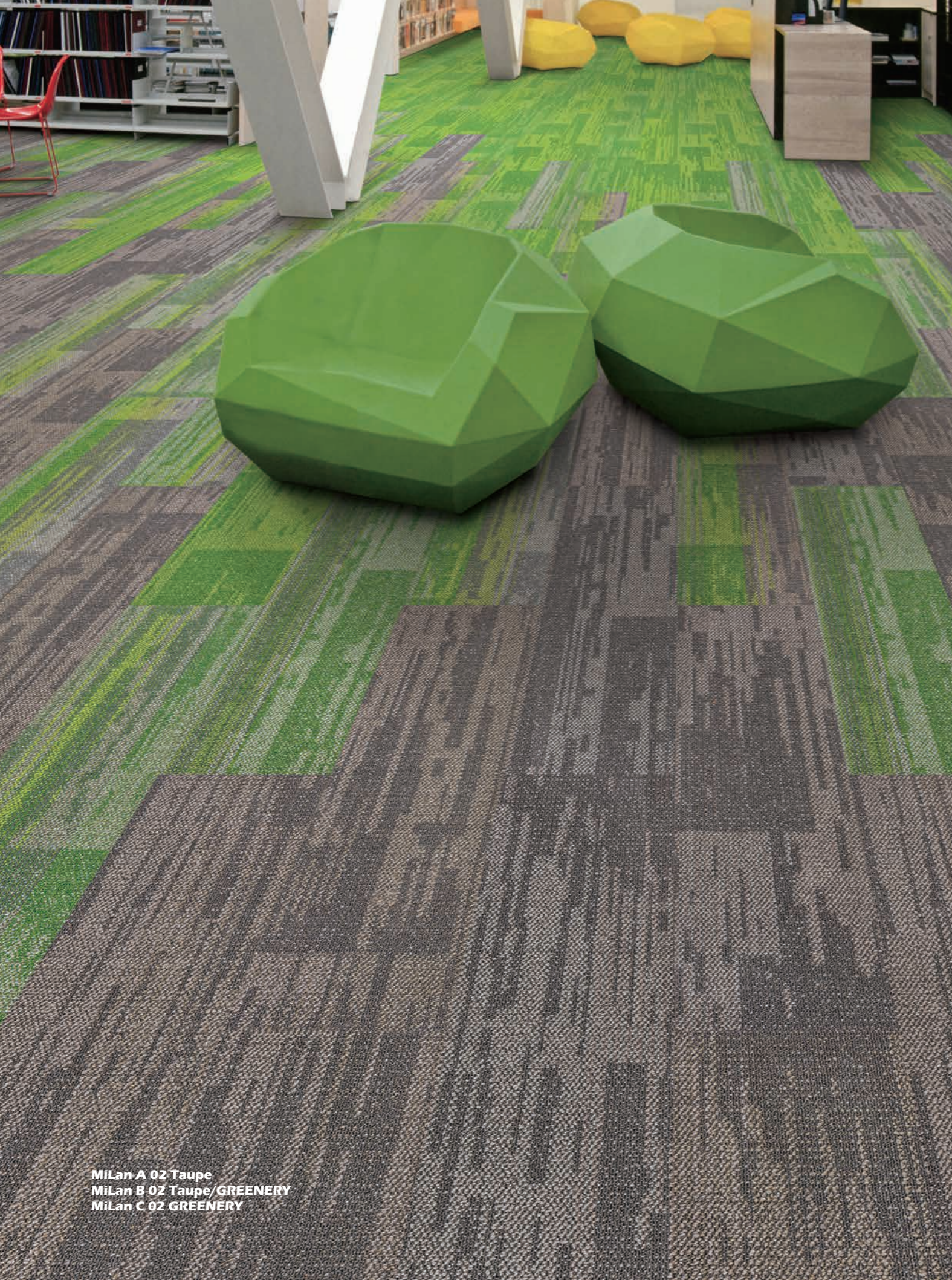
MiLan B 03 Fog/Citron
MiLan C 03 Citron



MiLan C 05 Poppy



MiLan C 04 Persimmon
MiLan A 08 Mist
MiLan C 04 Persimmon



MiLan A 02 Taupe
MiLan B 02 Taupe/GREENERY
MiLan C 02 GREENERY



MiLan A 03 Fog
MiLan C 07 Azure



MiLan A 01 Mushroom





MiLan C 03 Citron



MiLan A 04 Greige
MiLan B 04 Greige/Persimmon
MiLan C 04 Persimmon





MiLan A 08 Mist
MiLan B 08 Mist/Marigold



MiLan A 07 Granite
MiLan B 07 Granite/Azure
MiLan C 07 Azure



MiLan C 04 Persimmon
MiLan C 03 Citron
MiLan C 06 Magenta
MiLan C 08 Marigold
MiLan A 08 Mist

BAILING Series

Commercial Carpet

Specification

STYLE NAME:	BAILING(百灵)
CONSTRUCTION:	TUFTED.TEXTURED LOOP PILE
FACE YARN:	PA
DYE METHOD:	SOLUTION DYED
GAUGE:	1/12
PILE HEIGHT:	5-2.8 mm
PILE WEIGHT:	17 oz/yd ²
BACKING:	PVC
TILE SIZE:	25×100 cm



Bailing 01 fallen rock



Bailing 02 greenery



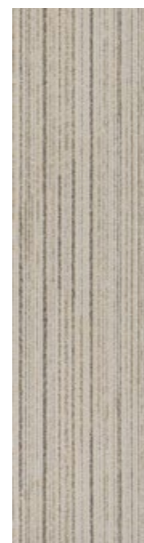
Bailing 03 coral gold



Bailing 04 blue aster



Bailing 05 ombre blue



Bailing 06 roasted cashew



Bailing 03 coral gold





Bailing 02 greenery



Bailing 04 blue aster



Bailing 05 ombre blue



Bailing 05 ombre blue
Bailing 06 roasted cashew

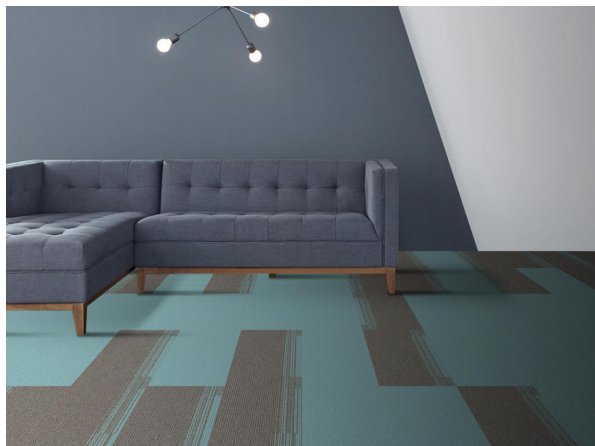
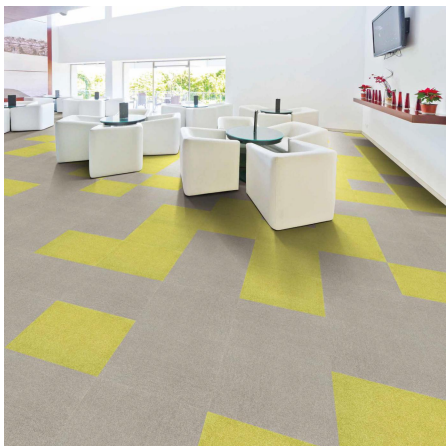


Bailing 06 roasted cashew

02

效果展示

EFFECT SHOW



02

效果展示

EFFECT SHOW



02

效果展示

EFFECT SHOW





项目案例

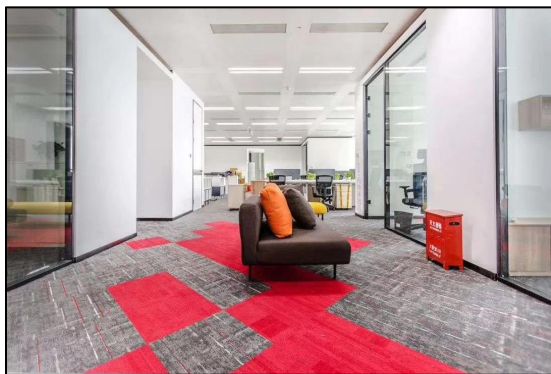
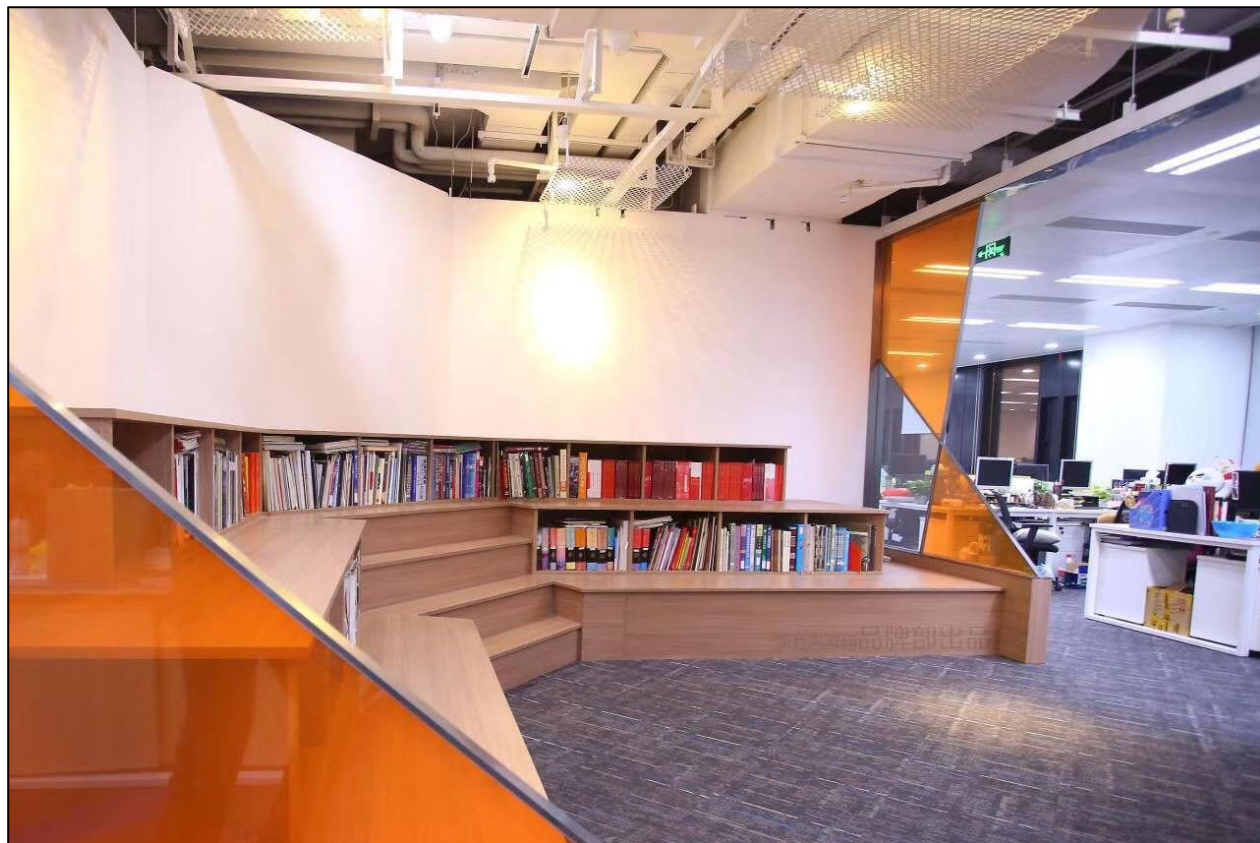
PART 04

DISCOVER YOUR UNIQUE VISION

04

项目案例 鲁能国际大厦

PROJECT CASE



04

项目案例 济南绿城金融中心

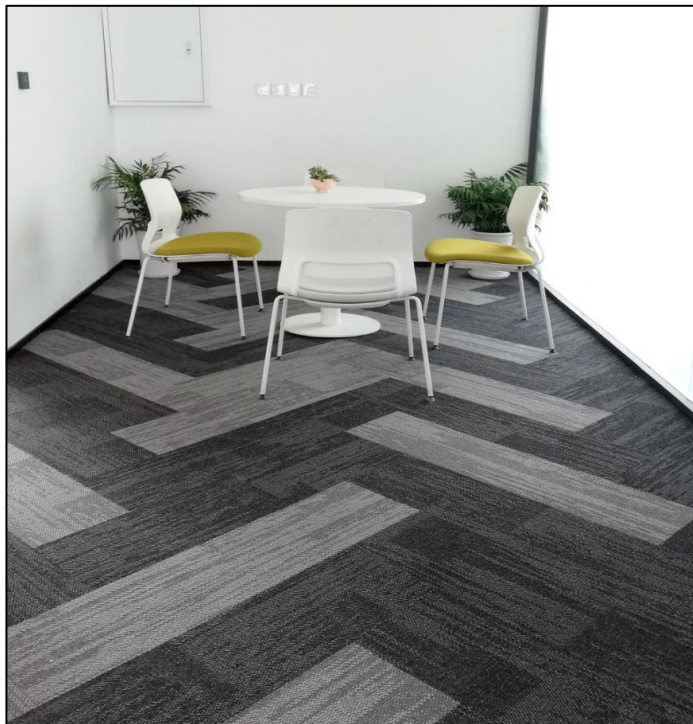
PROJECT CASE



04

项目案例 济高控云鼎大厦

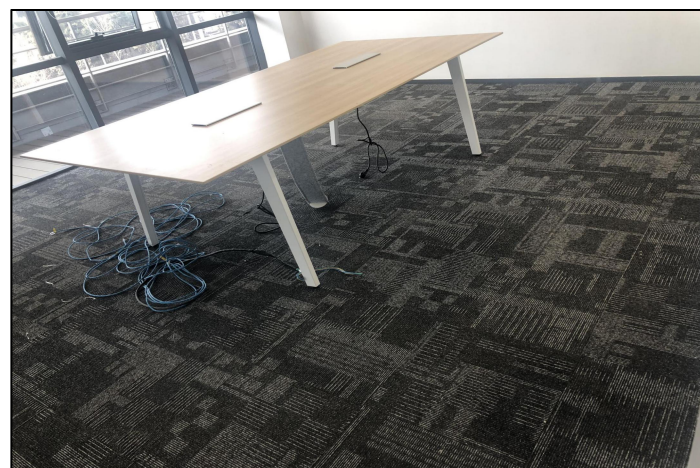
PROJECT CASE



04

项目案例 北京百度大楼

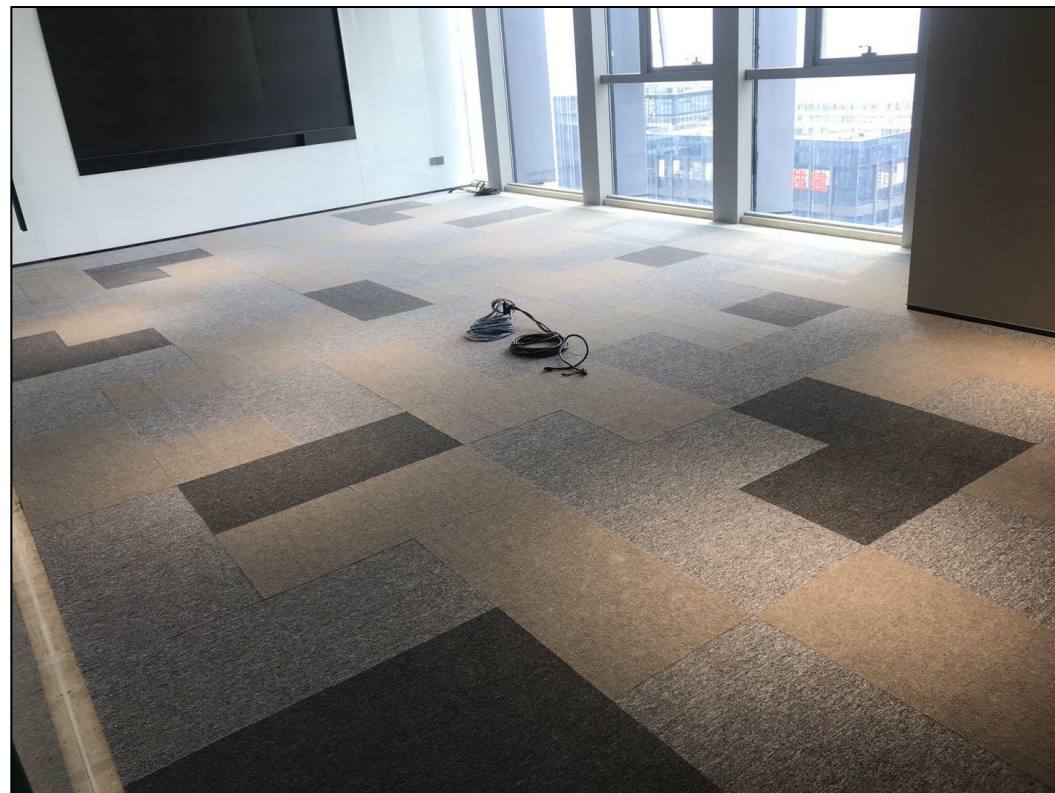
PROJECT CASE



04

项目案例 佛山美的大厦

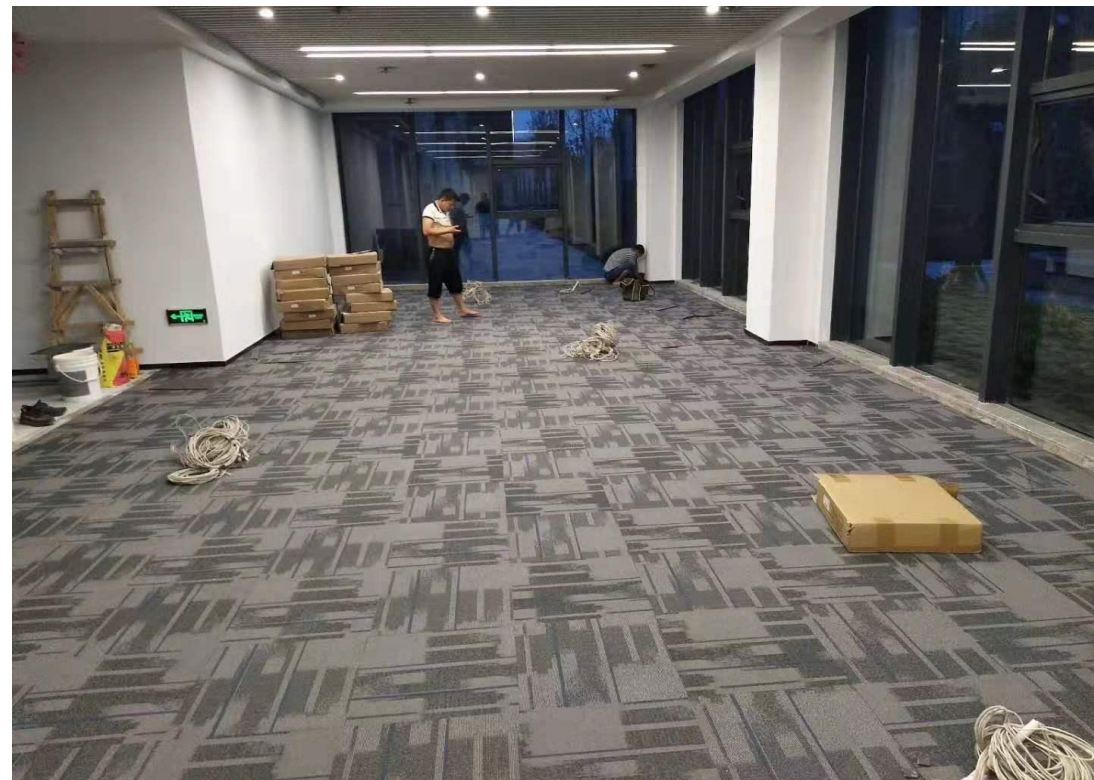
PROJECT CASE



04

项目案例 新加坡国家法院

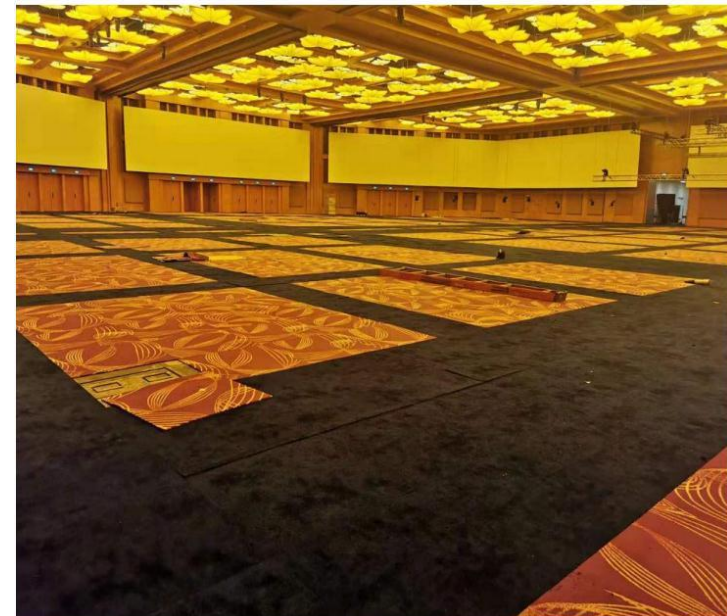
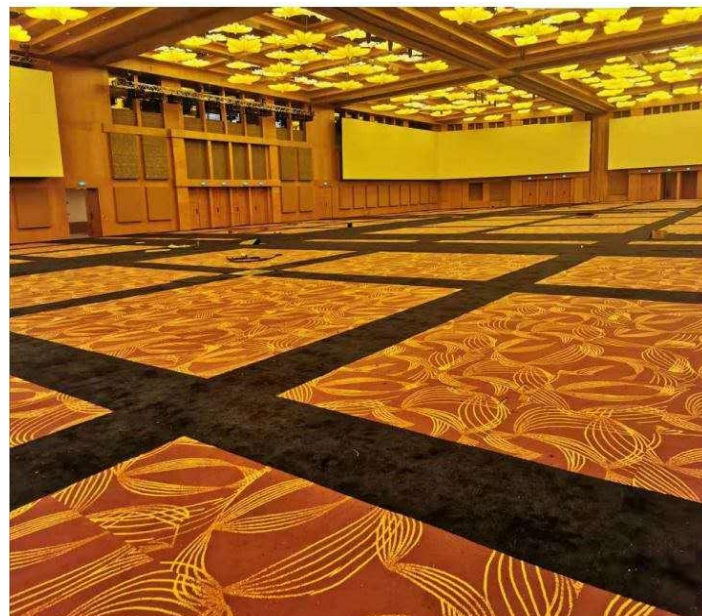
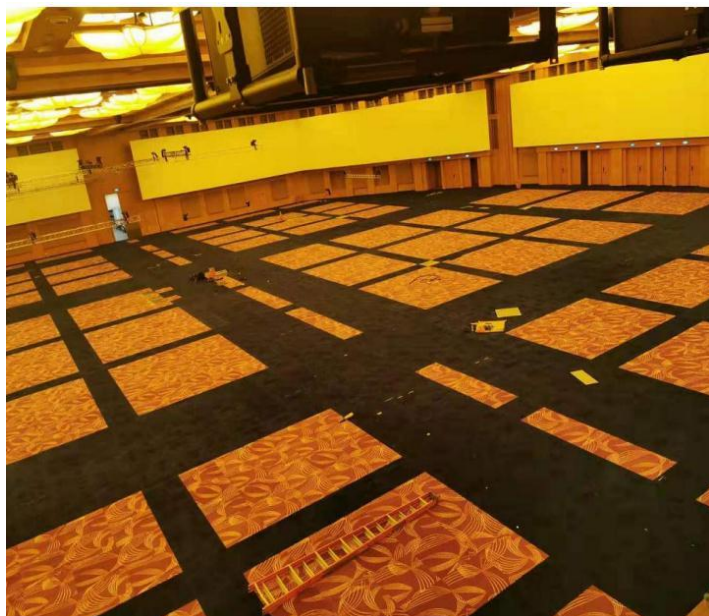
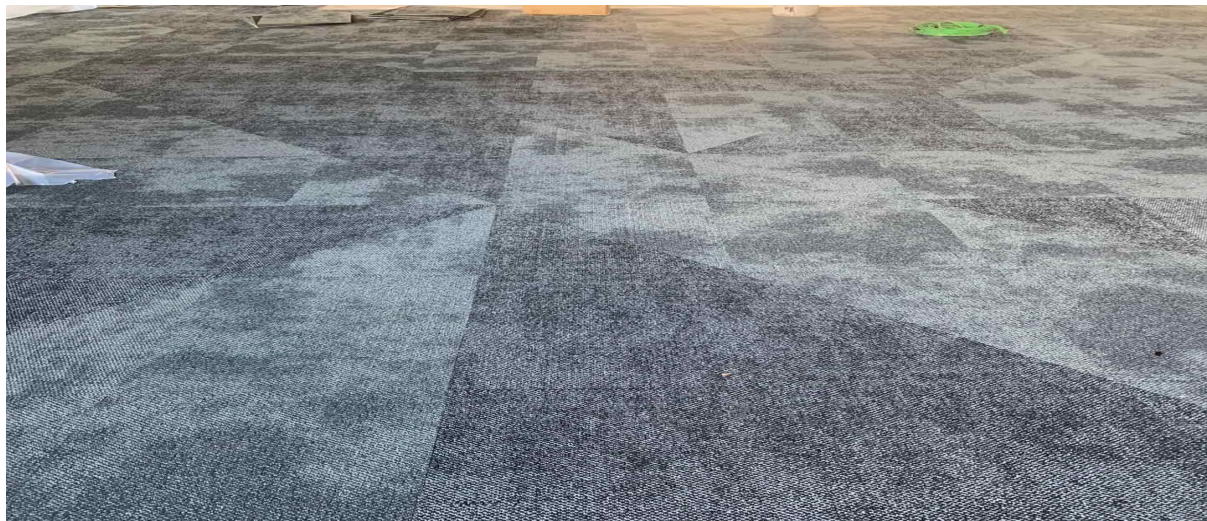
PROJECT CASE



04

项目案例 马来西亚云顶集团

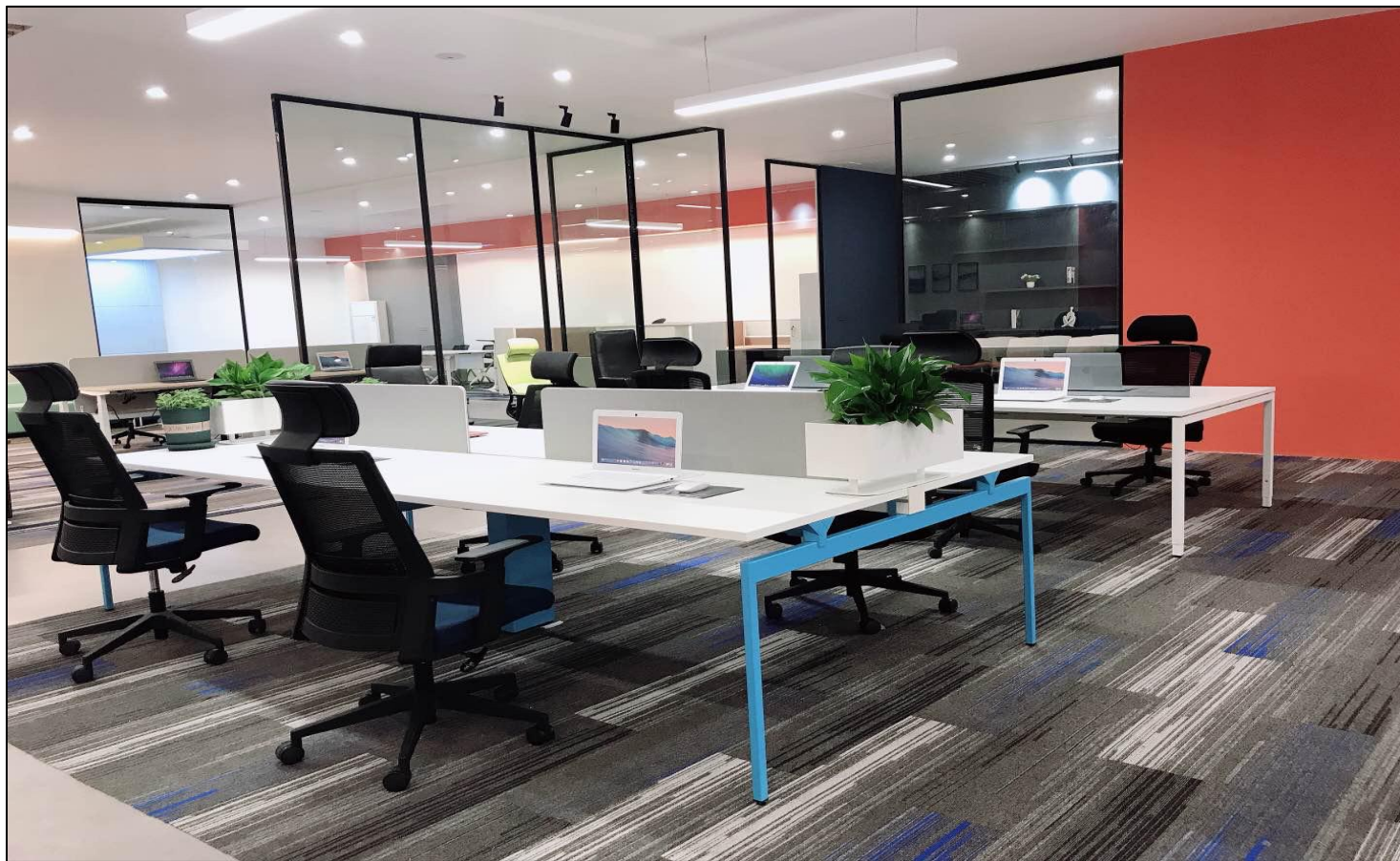
PROJECT CASE



04

项目案例 北京合生汇

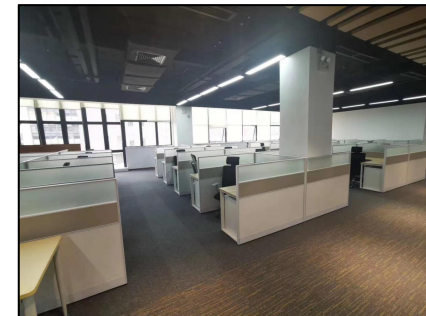
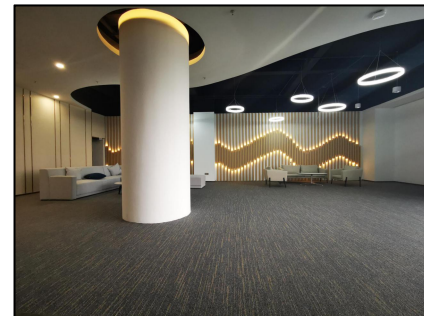
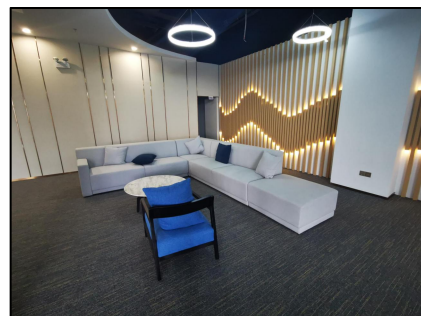
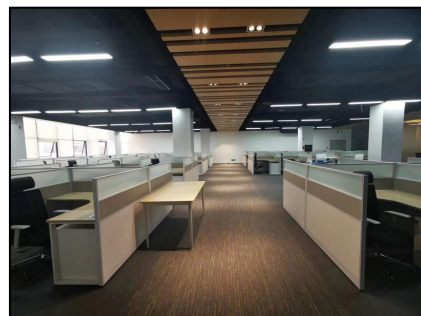
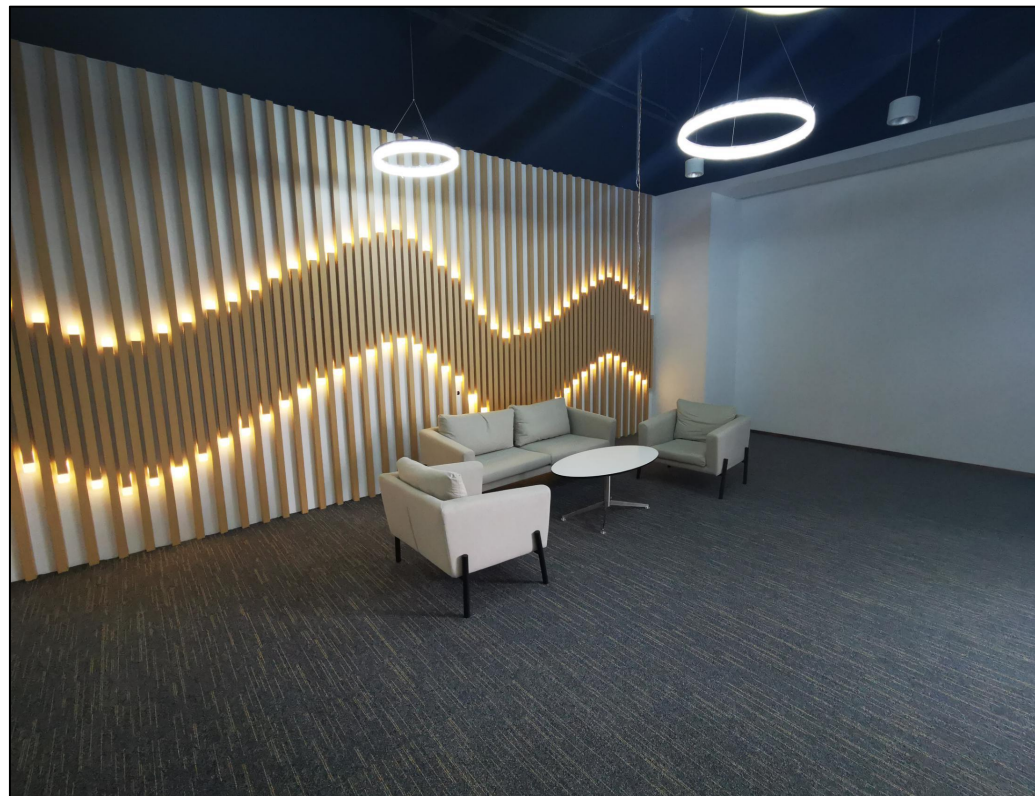
PROJECT CASE



04

项目案例 广州光为科技有限公司

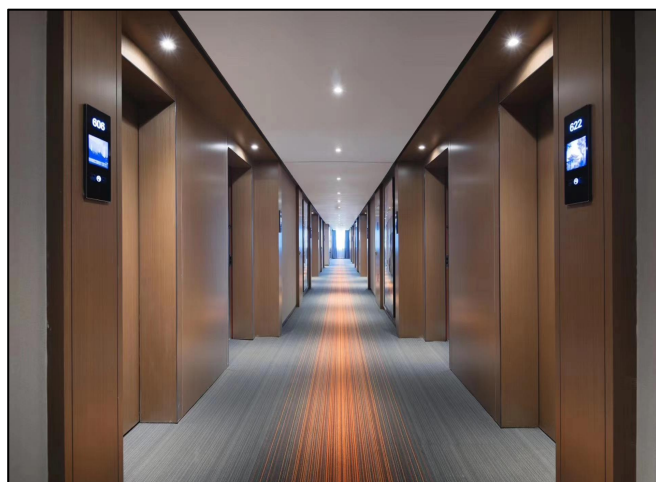
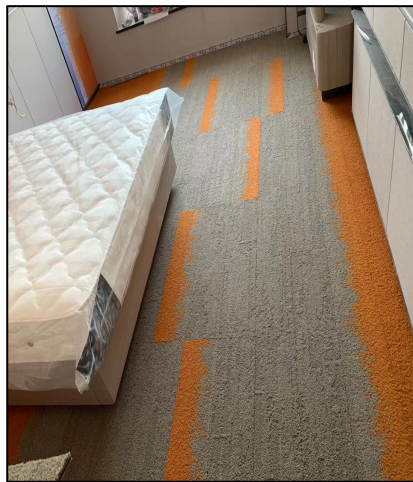
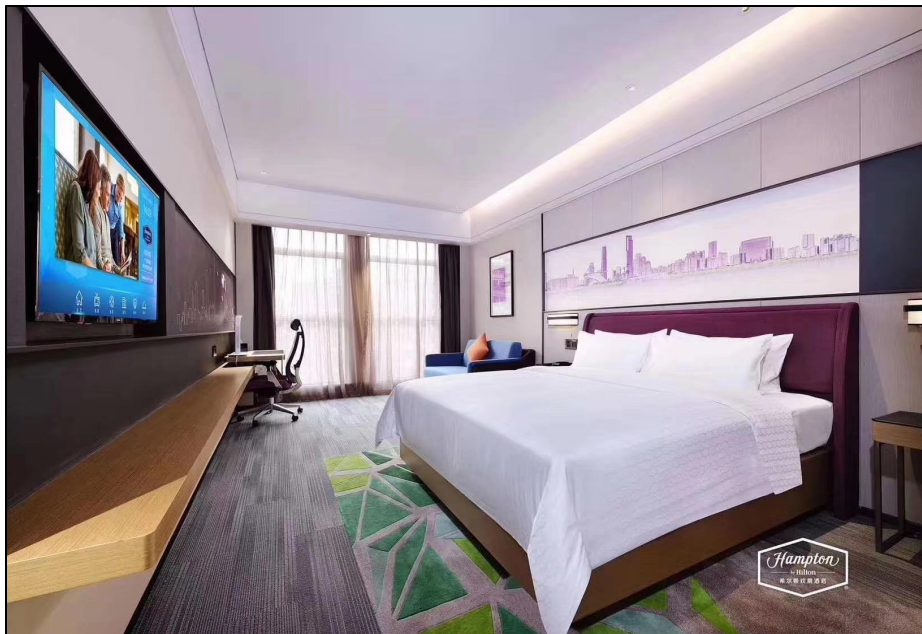
PROJECT CASE



04

项目案例 欢朋希尔顿 (全国)

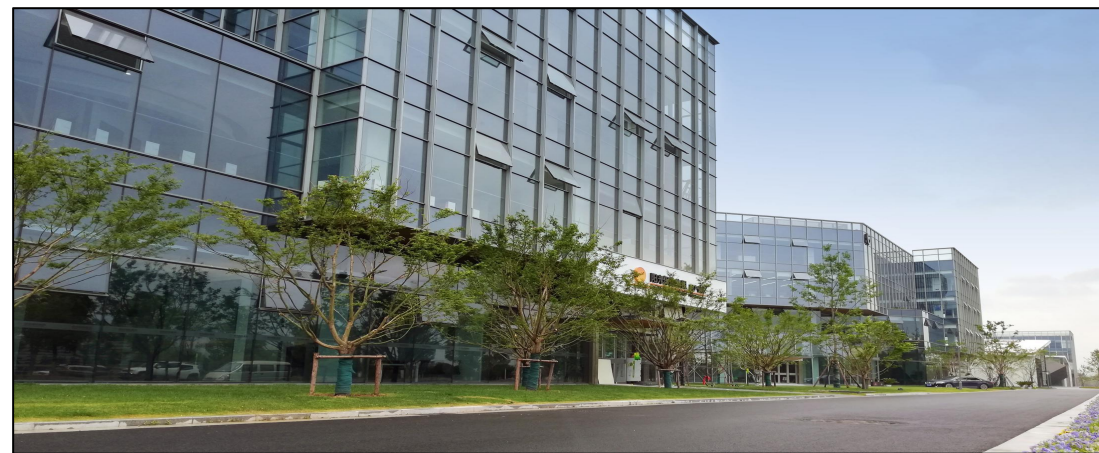
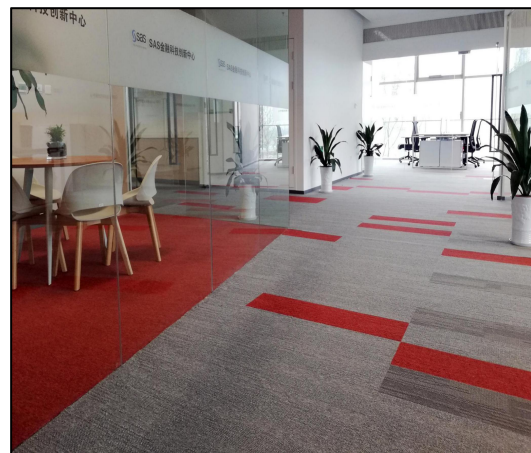
PROJECT CASE



04

项目案例 南京扬子江金融创意街

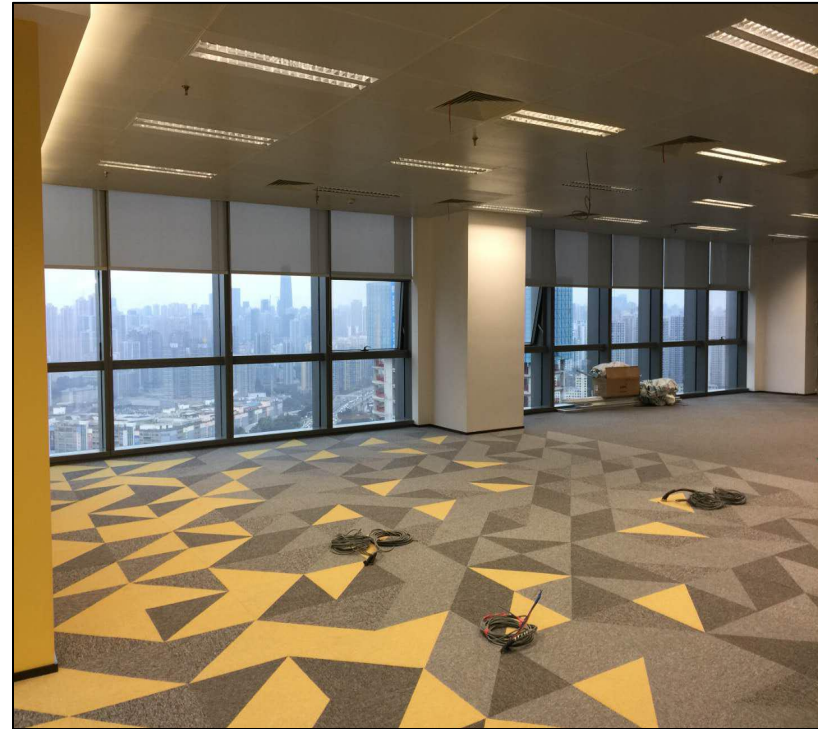
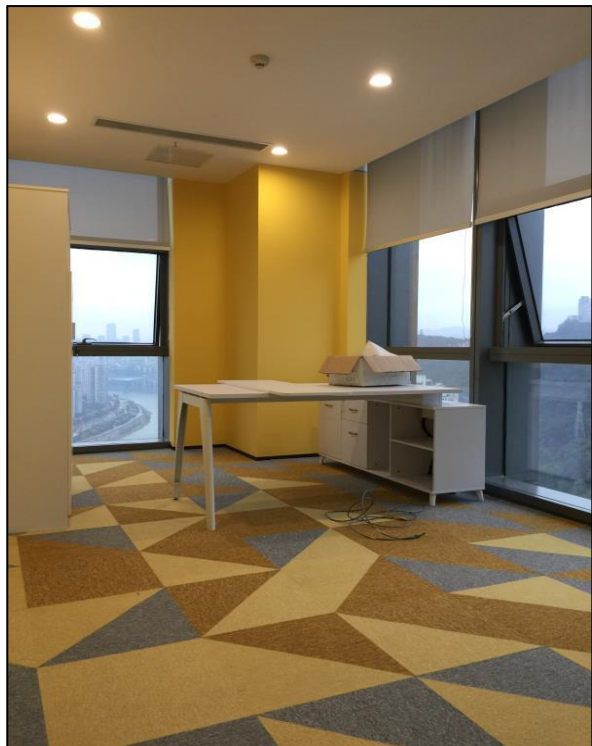
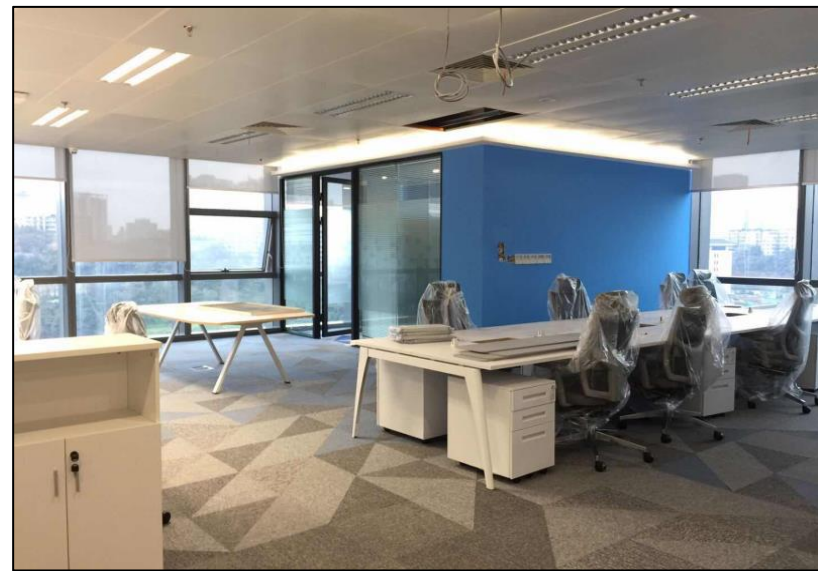
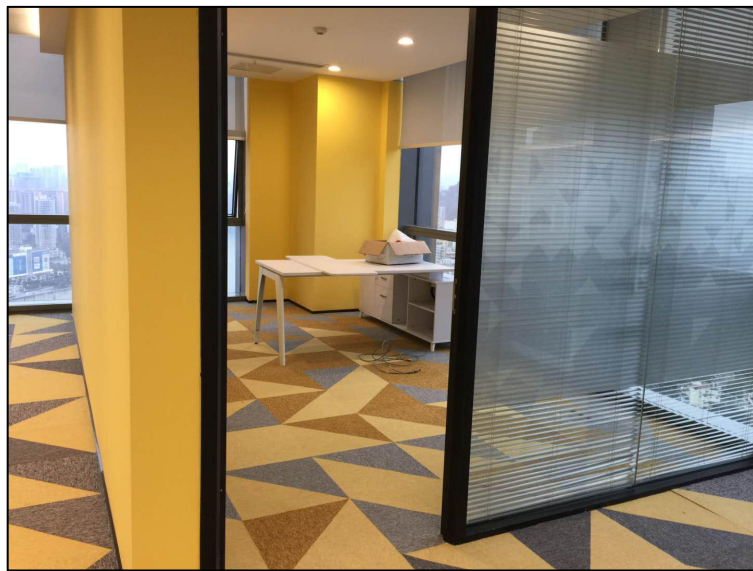
PROJECT CASE



04

项目案例 天华集团

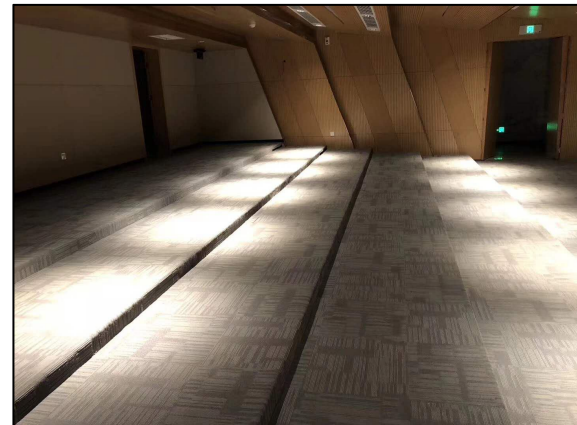
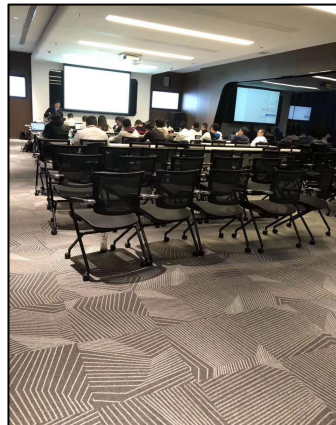
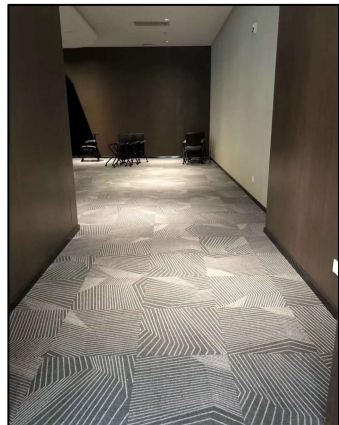
PROJECT CASE



04

项目案例 长安汽车总部

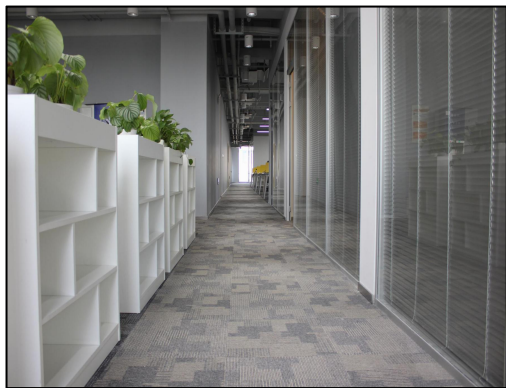
PROJECT CASE



04

项目案例 晨光文具

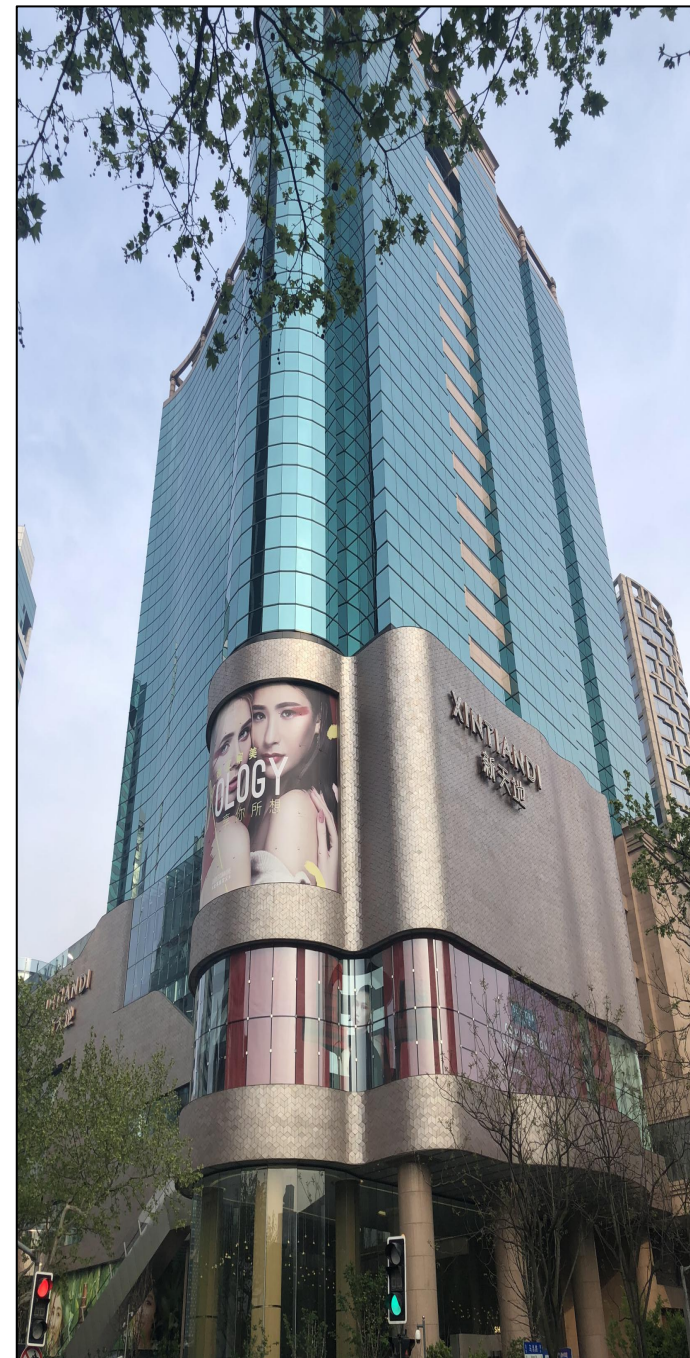
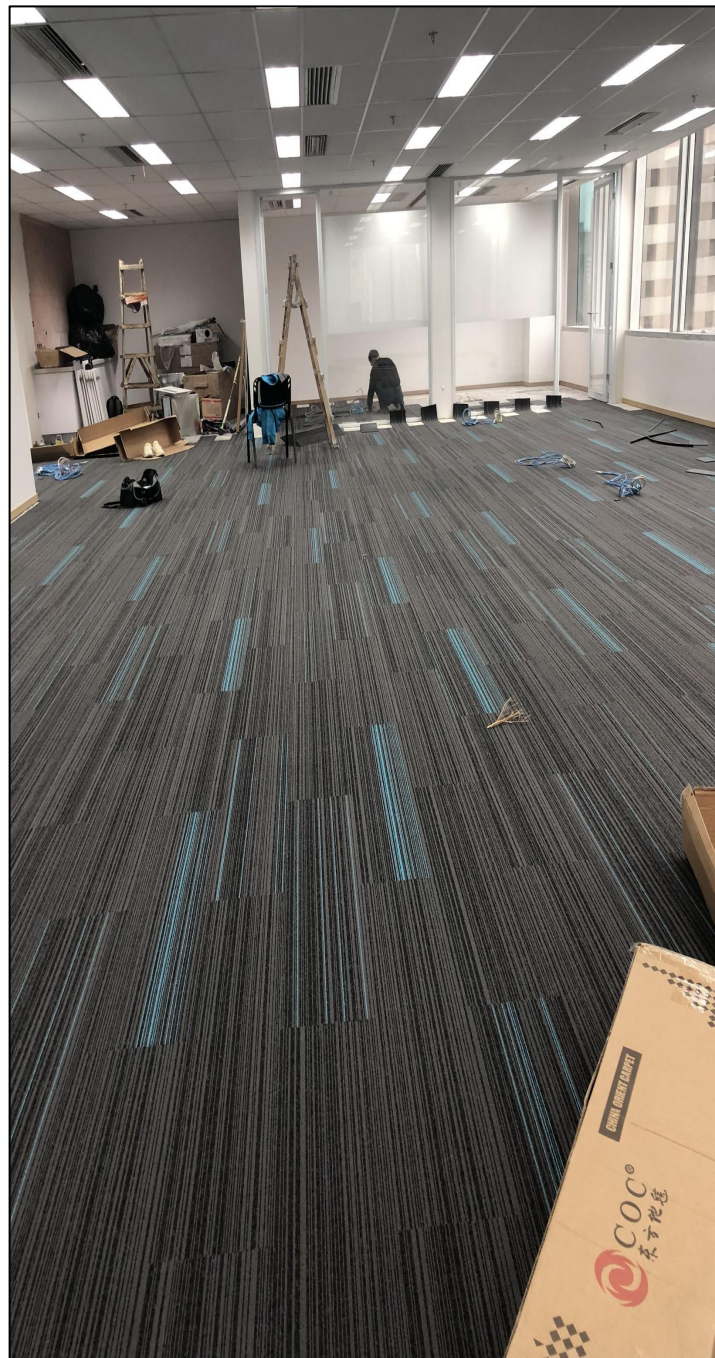
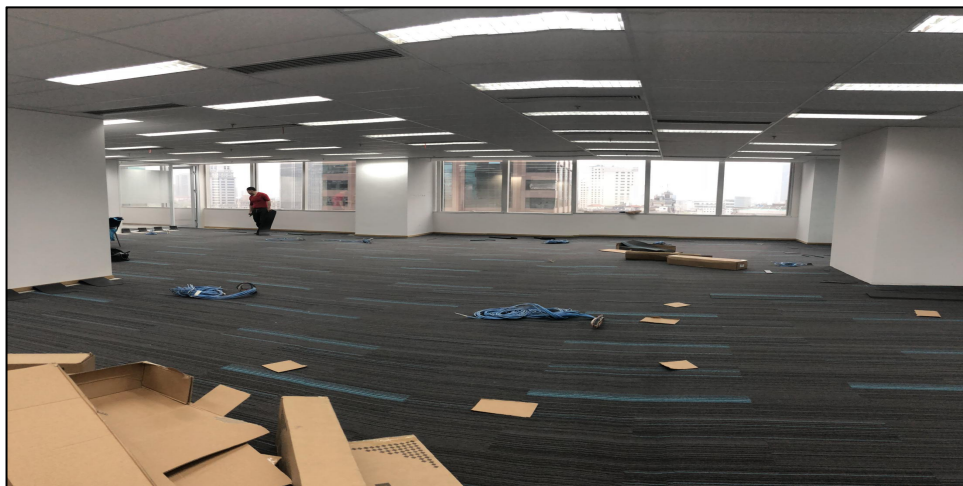
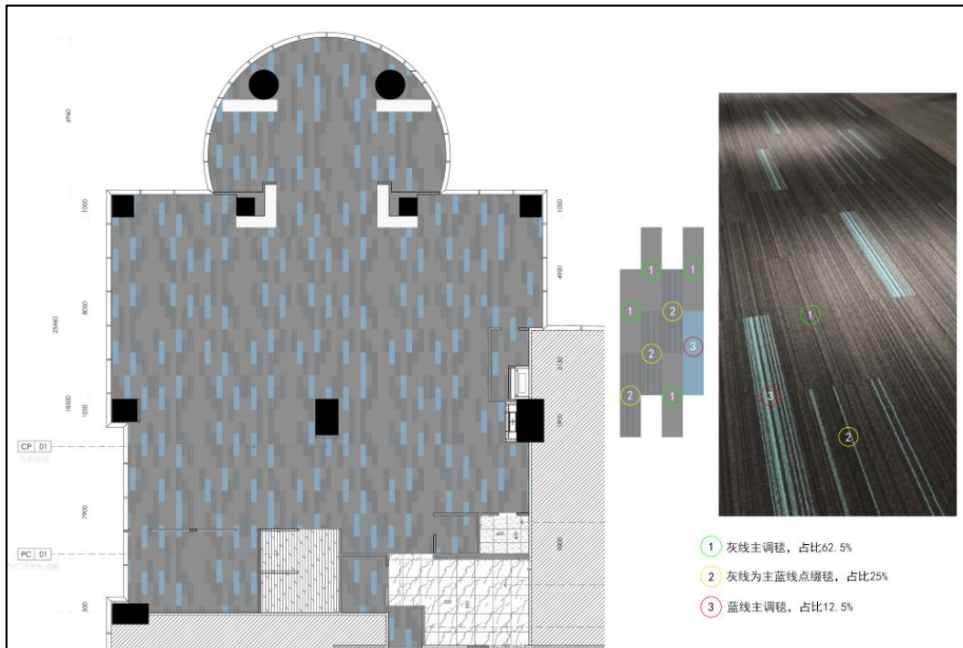
PROJECT CASE



04

项目案例 新天地瑞安广场

PROJECT CASE



04

项目案例 保利实业

PROJECT CASE



04

项目案例 中国企业报

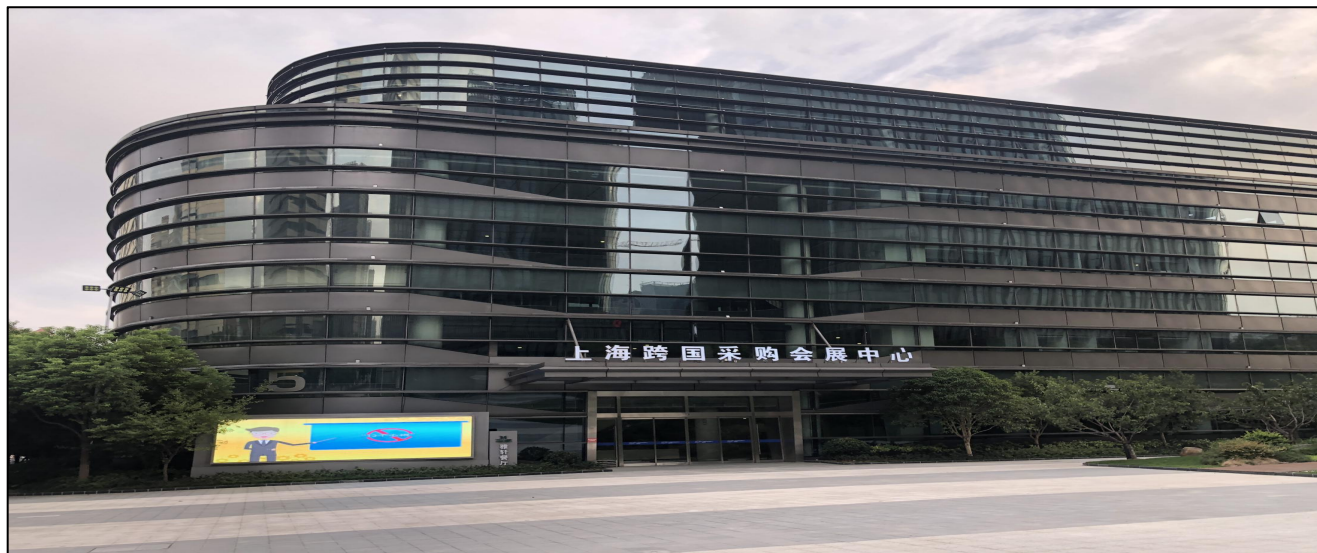
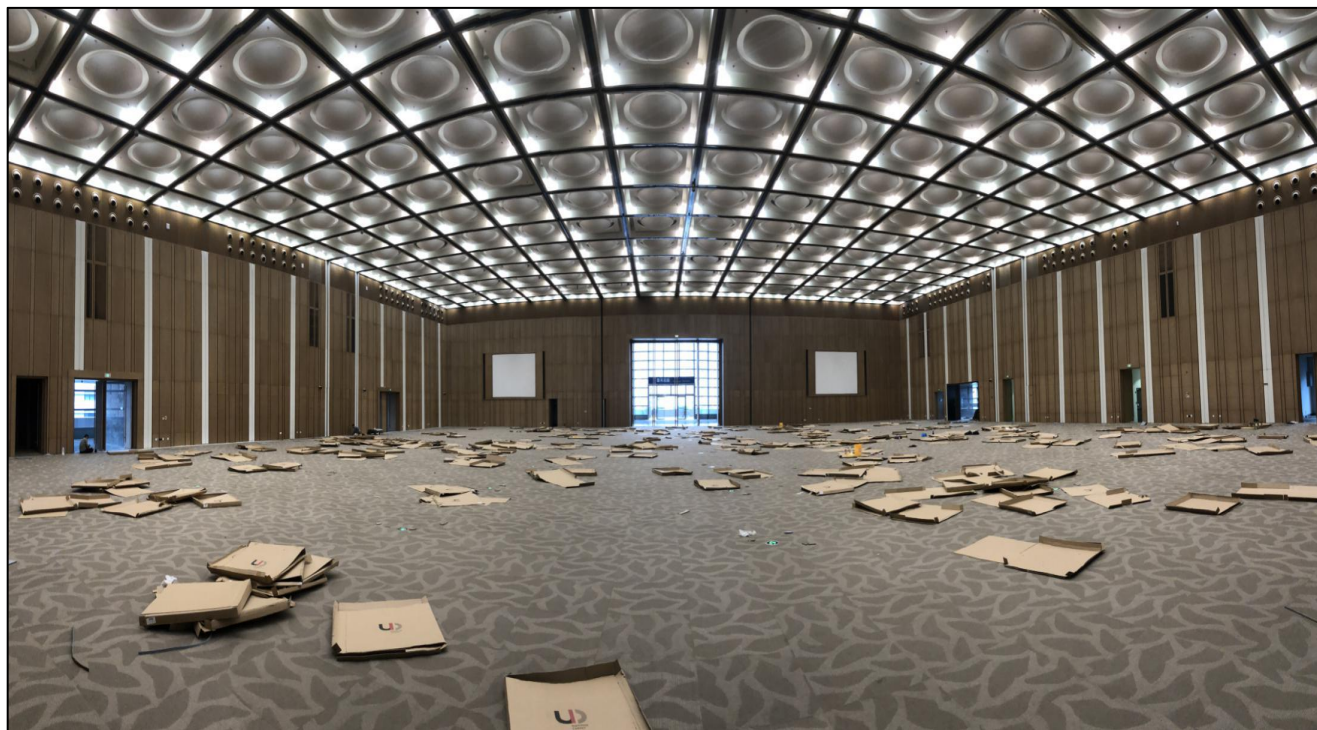
PROJECT CASE



04

项目案例 跨国采购中心

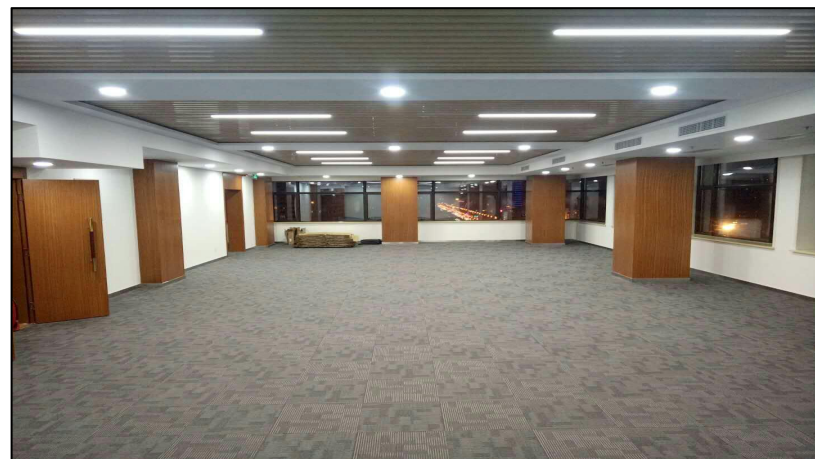
PROJECT CASE



04

项目案例 北京社科院

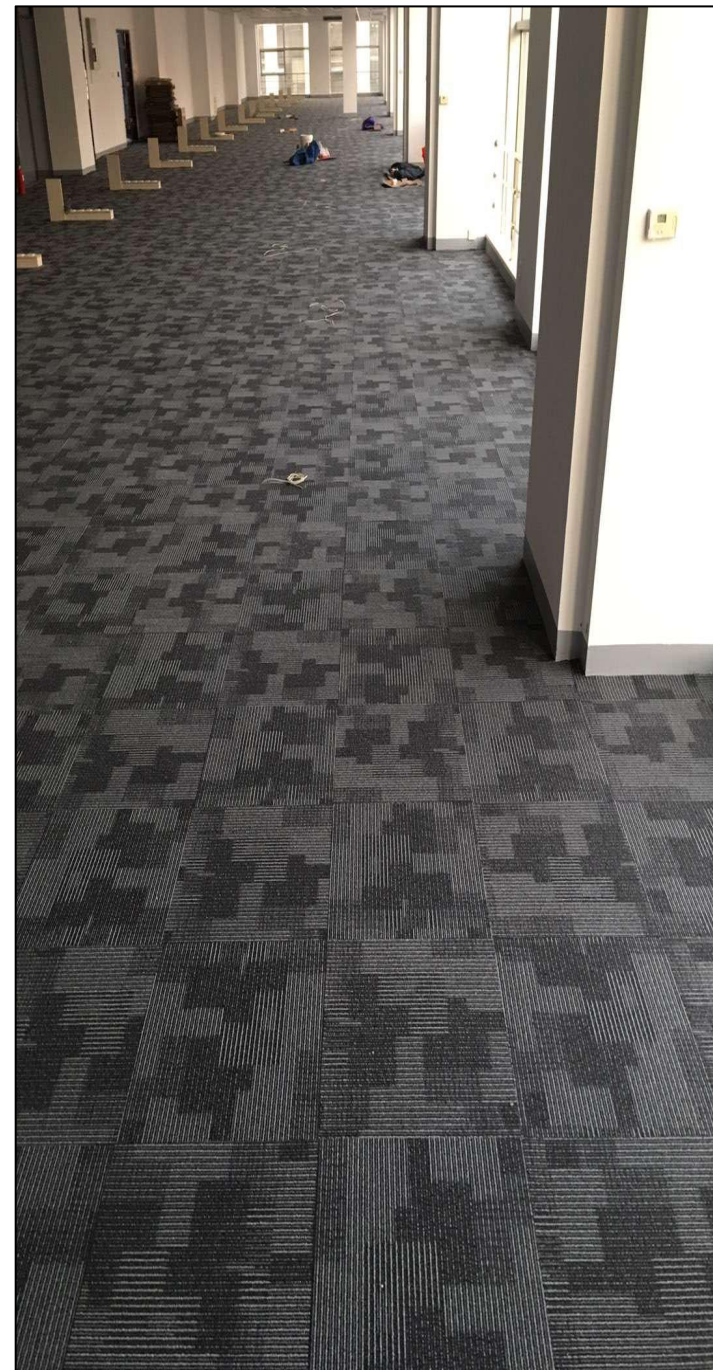
PROJECT CASE



04

项目案例 大连网络产业大厦

PROJECT CASE



04

项目案例 广州海航酒店

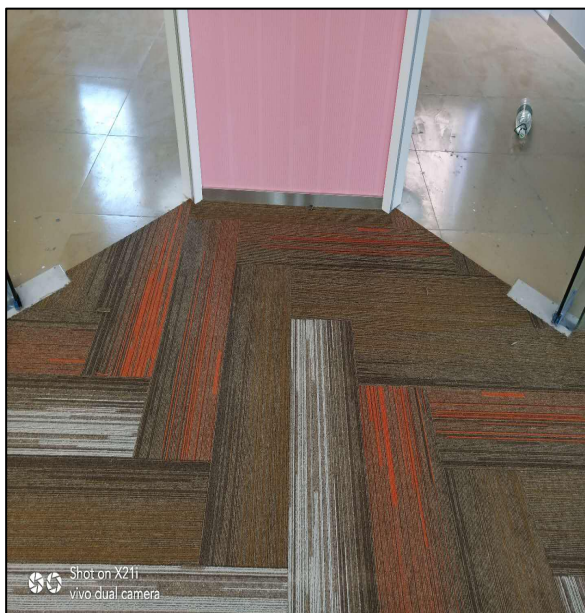
PROJECT CASE



04

项目案例 广州网红直播孵化平台

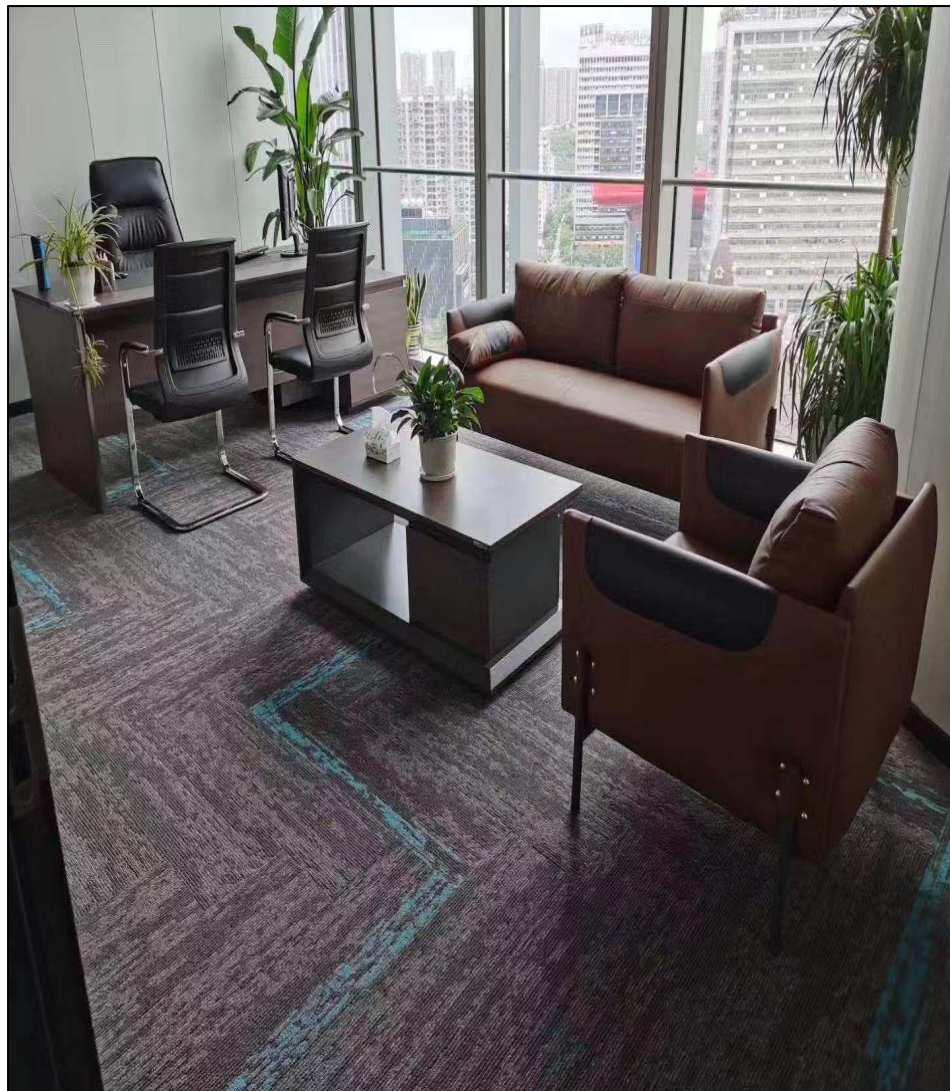
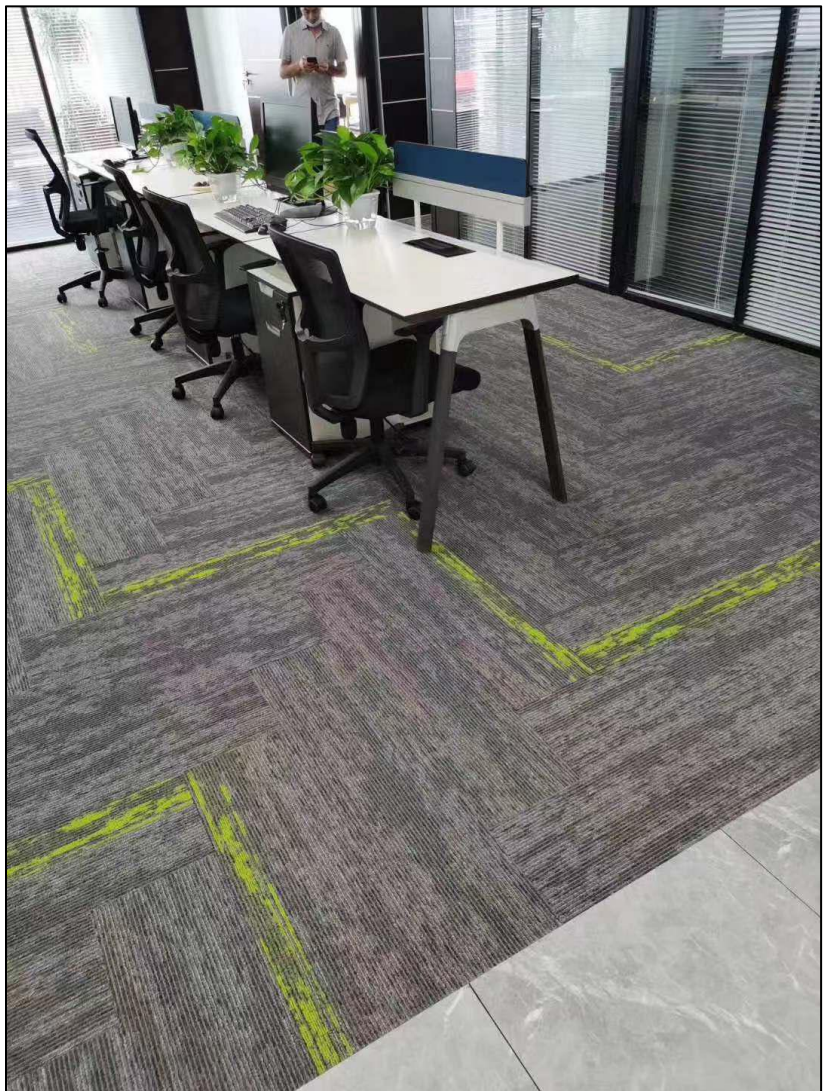
PROJECT CASE



04

项目案例 汉峪金谷基金大厦

PROJECT CASE



04

项目案例 基准方中

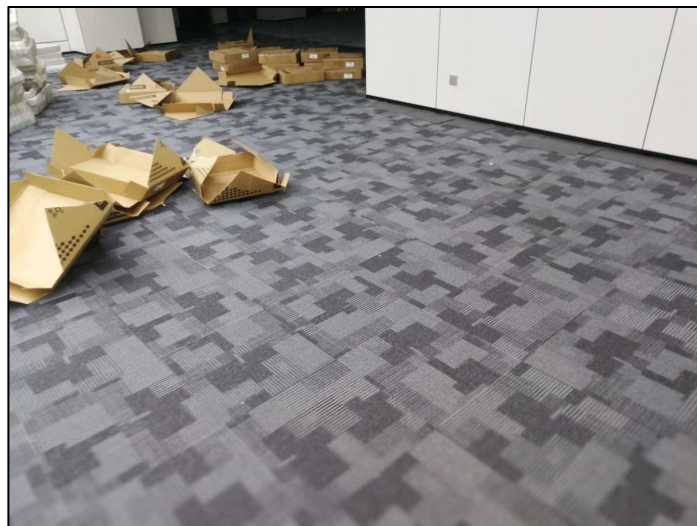
PROJECT CASE



04

项目案例 西安万象汇

PROJECT CASE



04

项目案例 广州检察院

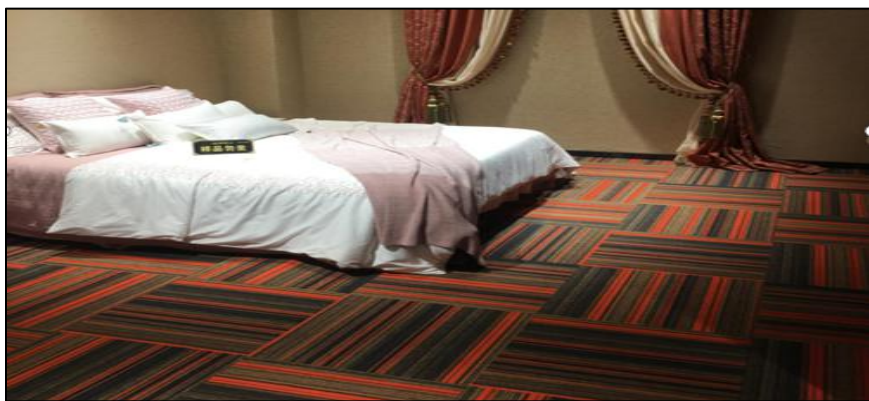
PROJECT CASE



04

项目案例 东营软装城

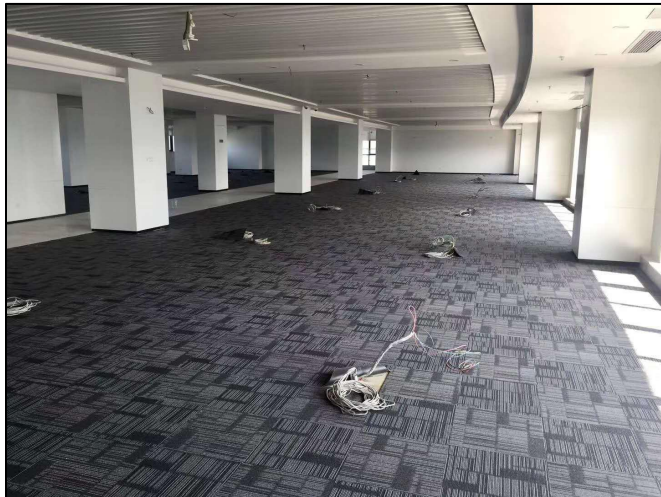
PROJECT CASE



04

项目案例 重庆农村商业银行

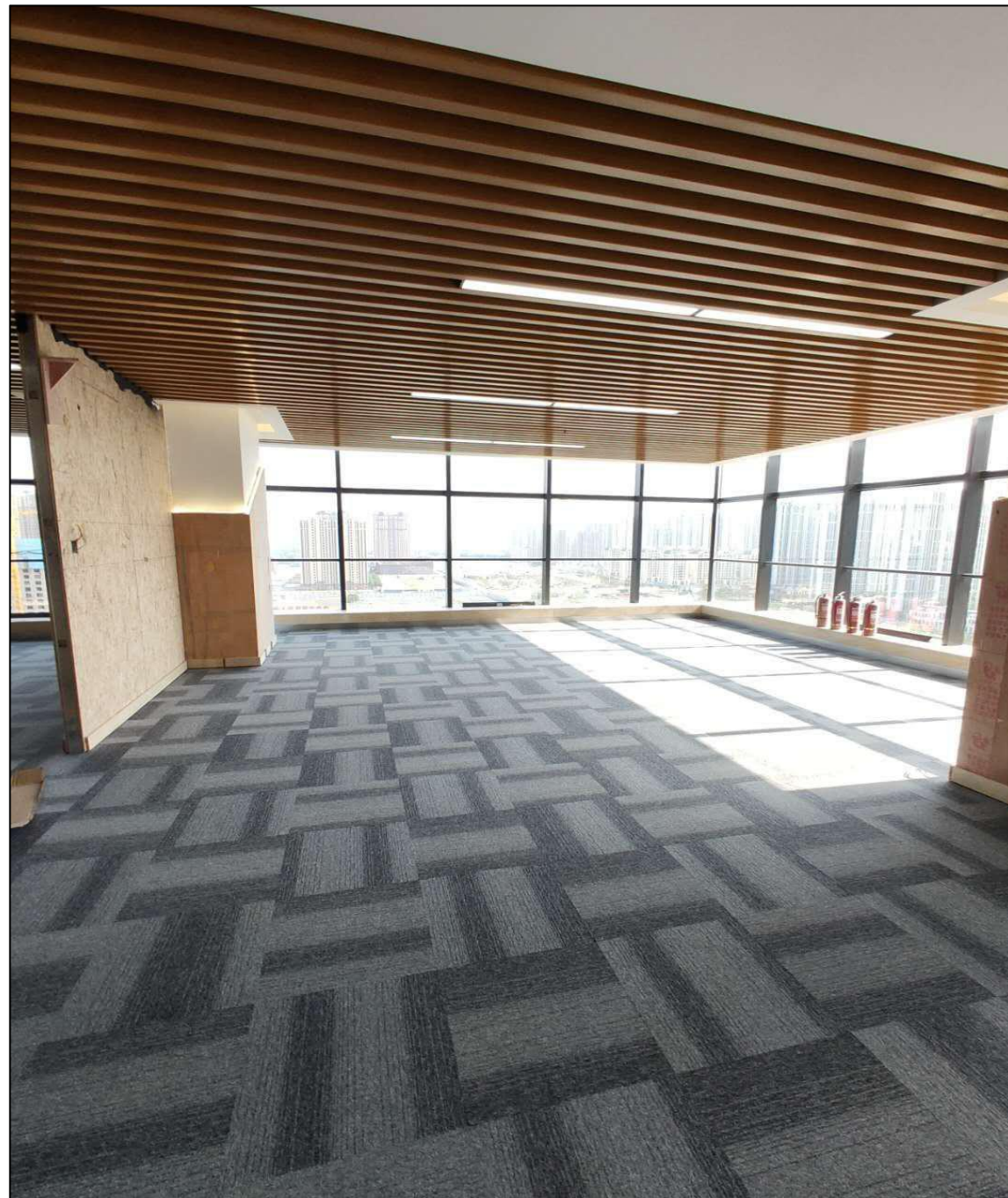
PROJECT CASE



04

项目案例 中冶置地

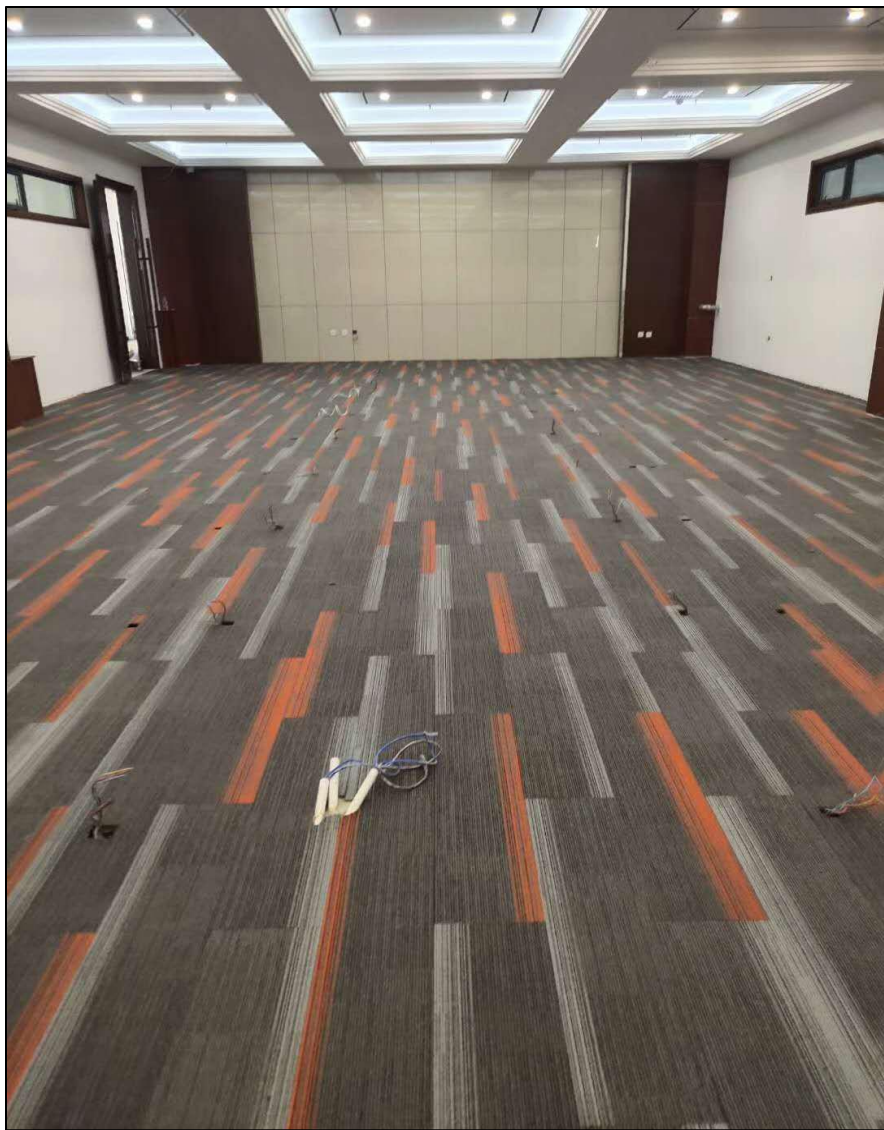
PROJECT CASE



04

项目案例 石家庄城市馆

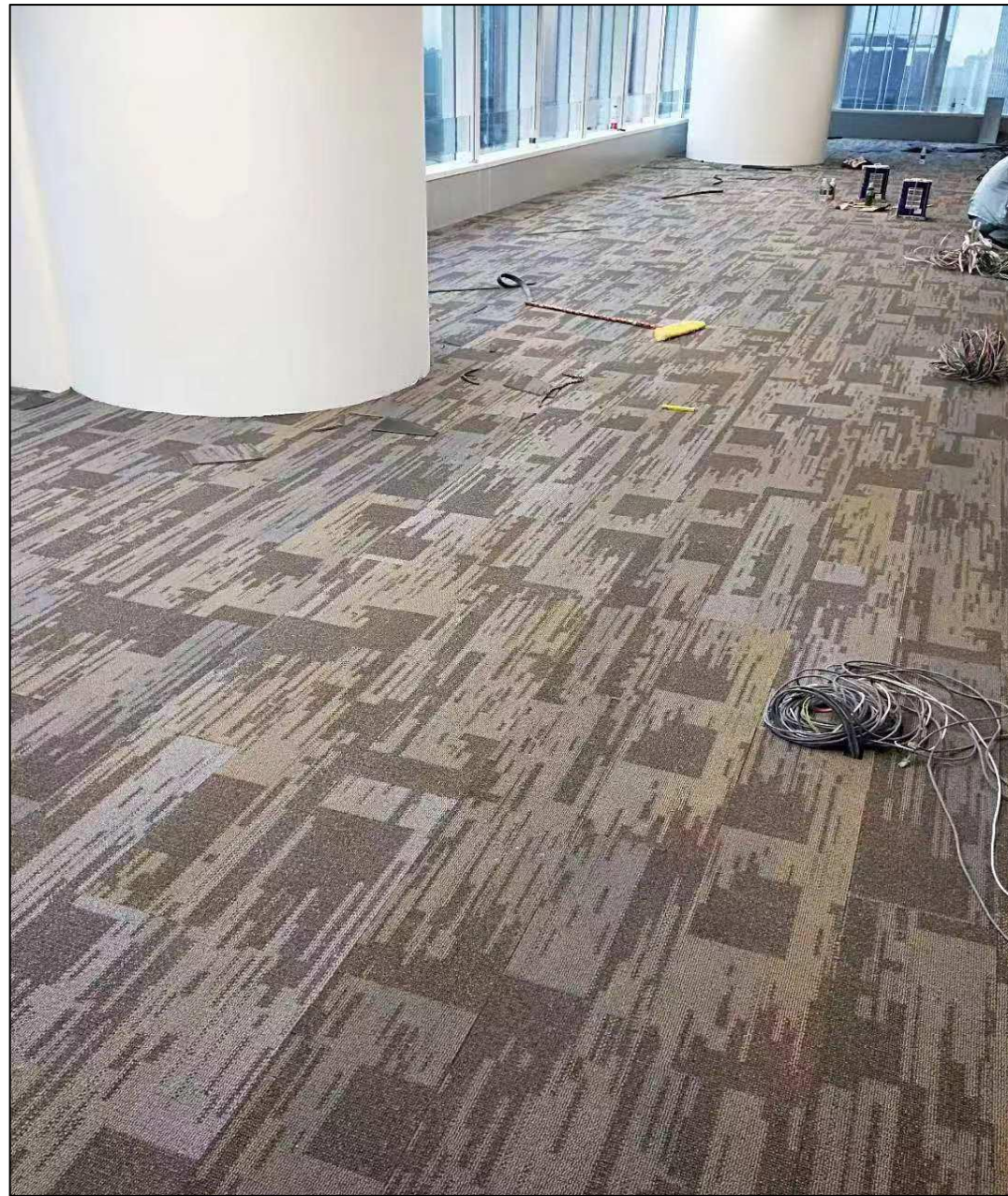
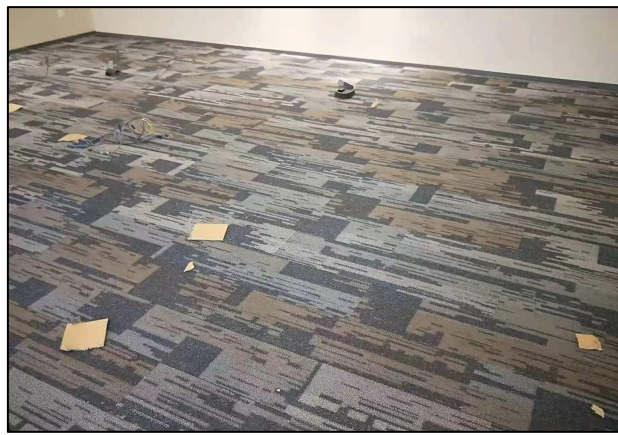
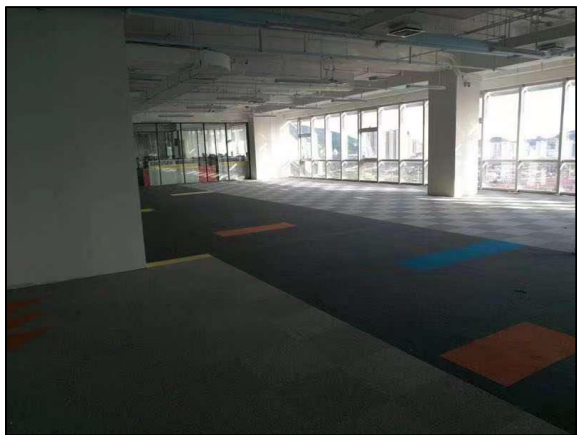
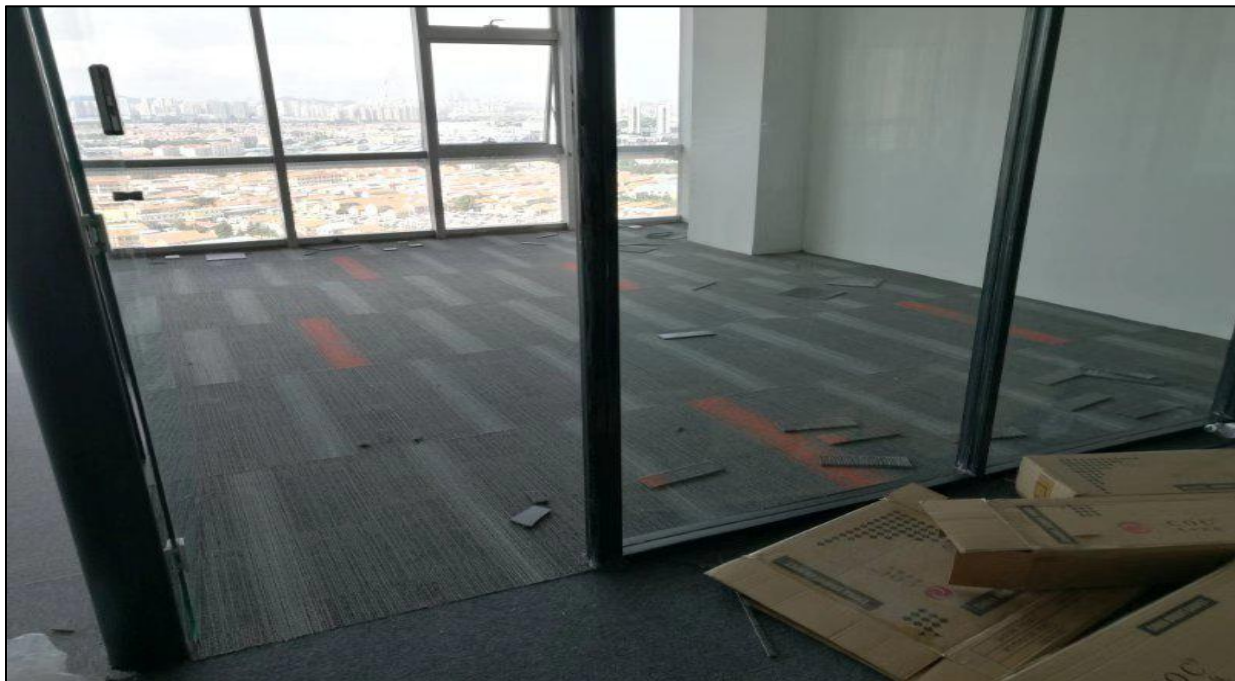
PROJECT CASE



04

项目案例 日照兴业办公大楼

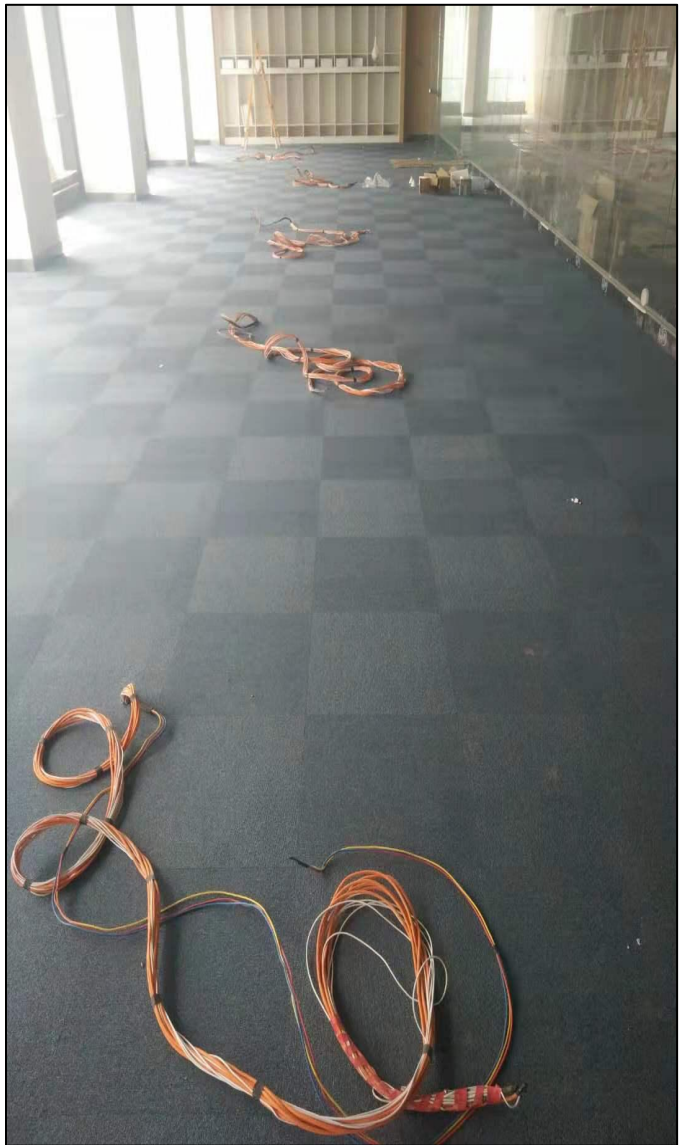
PROJECT CASE



04

项目案例 大连中国银行

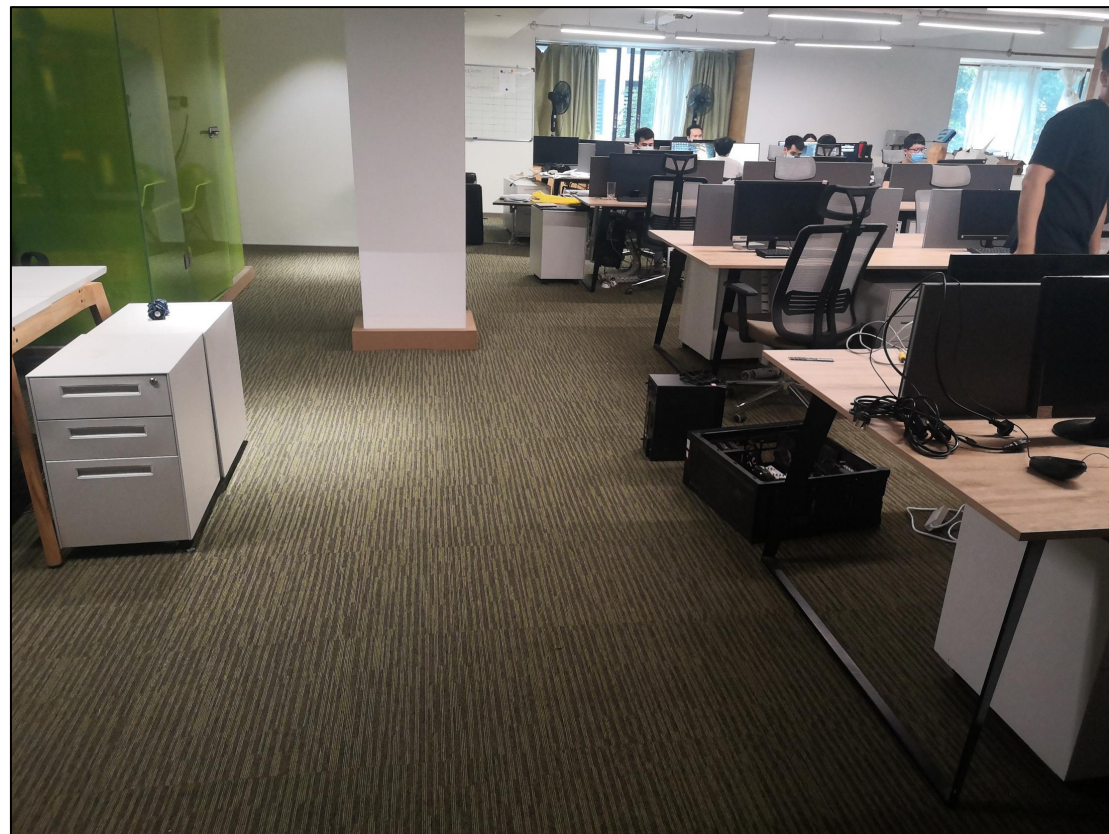
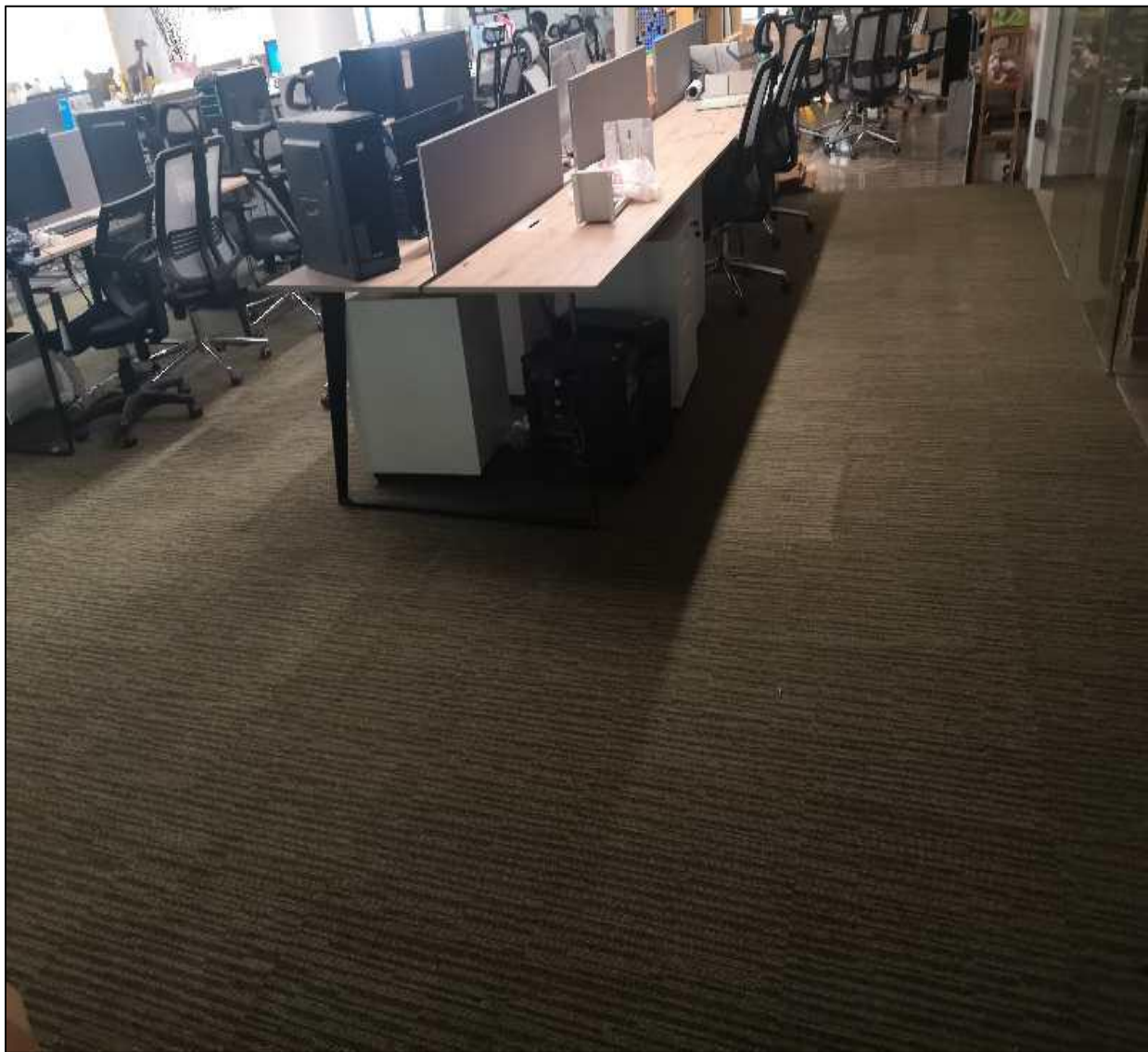
PROJECT CASE



04

项目案例 广州天健创意园

PROJECT CASE





合作伙伴
COOPERATIVE PARTNER